

# AUGUST 28-30 & SEPTEMBER 4-7

Both Fridays: 2 p.m. to 8 p.m. Both Saturdays, Sundays, and Labor Day Monday: 10 a.m. to 6 p.m.



## 2020 PARK CITY AREA SHOWCASE *of* HOMES

[PCShowcaseOfHomes.com](http://PCShowcaseOfHomes.com)

PRODUCED BY:



PRESENTED BY:

### ZIONS BANK®

WE HAVEN'T FORGOTTEN WHO KEEPS US IN BUSINESS®



2019 Showcase Home by  
Ezra Lee Design+Build  
[ezralee.com](http://ezralee.com)

SPONSORED BY:

Hamilton Park  
INTERIORS





Photography by Josh Yamamoto



Photography by Darryl Dobson



Photography by Amanda Evans



Photography by Miranda Kimberlin



New Construction | Design-Build | Commercial | Remodel  
**PERSONABLE | ACCOUNTABLE | EXPERIENCED**

**435-649-5252**

office@bdogbuilders.com • www.bdogbuilders.com



LISTEN TO HEATHER OSMOND HOST THE  REAL ESTATE SHOW EVERY SATURDAY FROM 11AM-12PM



151 E. STATE STREET, LEHI • 801-766-6448  
1660 N. STATE STREET, OREM • 801-225-2555  
6191 S. STATE STREET, MURRAY • 833-OSMONDS  
FASHION PLACE MALL

OSMONDDDESIGNS.COM



**BEST OF UTAH VALLEY**  
FURNITURE  
HOME DECOR  
INTERIOR DESIGN



**2020 BEST OF HOUZZ**  
WINNER  
INTERIOR DESIGN  
CUSTOMER SERVICE



**2020 BEST OF STATE**  
INTERIOR DESIGN  
HOME DECOR  
FURNITURE



"These are  
a few of my  
favorite things!"

*-Heather Osmond*



Featured In:

THE DECOR

AD

THE WALL STREET JOURNAL

Style-Design

food

Good Things

hat

KJZZ 14



Glenwild Sage Home, Park City, Utah

## Furnishing Utah's Finest Homes

Today, our homes are more important than ever. And quality furniture can create spaces that you and your family love to live in. With one of the state's largest collections of high-end furniture from a wide variety of brands, Helm can help bring added comfort and luxury into your home.

STOP BY OUR 30,000 SQUARE-FOOT SHOWROOM  
OR CALL TO SCHEDULE A PRIVATE WALKTHROUGH.



5253 S STATE ST. MURRAY, UT 84107

(801) 263-1292  
HELMHOME.COM



# ēlume

DISTINCTIVE LIGHTING



HAMMERTONSTUDIO

Verdi Pendant



24th Annual  
**ARTS**  
AWARDS  
WINNER



26th Annual  
**ARTS**  
AWARDS  
WINNER



29th Annual  
**ARTS**  
AWARDS  
WINNER

Park City, Utah - Showroom  
3156 Quarry Road Unit A  
(435) 647-2997 By Appointment  
[www.elumepc.com](http://www.elumepc.com)



# Surfaces inspired by your spotless style



Inspiration isn't always obvious, but the right partner should be. View our entire line of porcelain tile and countertops at [ContempoTile.com](https://ContempoTile.com) and call for complimentary samples.

Countertop: **State of Grace** by Crossville  
Project and Photography by The OAK Design Project

Touch, visualize, and experience our wide array of tiles and slabs at any of our Contempo Tile branches located throughout the Wasatch Front.



**CONTEMPO**  
Tile • Stone • Slab

Contempo Tile, Salt Lake City  
3732 South 300 West  
801.262.1717  
[ContempoTile.com](https://ContempoTile.com)

Contempo Slab Gallery, Salt Lake City  
2885 South 300 West  
801.433.1717  
[ContempoTile.com](https://ContempoTile.com)





# MOUNTAIN PEAK LUXURY PROPERTY MANAGEMENT

## Your Second Home Is Our First Priority

If you own a second home in Park City, Utah or in surrounding communities of the Heber Valley, it's important to find a property management professional who you trust to care for your home. At Mountain Peak Luxury Property Management, we never stop working to keep your home in exquisite shape.



### Services:

Maintenance • Property Inspections • House Cleaning

Car Detailing and Fueling • Shopping and Stocking

Spa Maintenance Airport Transfers • Package Receiving

[MountainPeakLuxpm.com](http://MountainPeakLuxpm.com)

**435-244-2044**

I N T E N T I O N A L L Y





**EZRA  
LEE  
DESIGN  
+BUILD**

U N C O N V E N T I O N A L

architecture  
interior design  
construction

[ezralee.com](http://ezralee.com)



# THE FINE LINE BETWEEN FURNITURE AND ART

With the core belief that furniture should be fine art, Bernhardt Furniture Company has been crafting luxury furniture lines for more than a century. And for the first time ever, Bernhardt has a standalone store in Utah, bringing its blend of classic comfort and artistic luxury to a brand new audience.

B E R N H A R D T  
INTERIORS



VISIT OUR FIRST-EVER  
STANDALONE SHOWROOM AT  
5251 S. STATE STREET  
IN MURRAY

[WWW.BERNHARDTUTAH.COM](http://WWW.BERNHARDTUTAH.COM)  
(801) 263-1292





**WHEN ONLY THE BEST WILL DO – BECAUSE "GOOD ENOUGH" ISN'T GOOD ENOUGH.**



**844-649-5200 | 2700 HOMESTEAD ROAD #10 PARK CITY | [AVSUTAH.COM](http://AVSUTAH.COM)**



# SEE IT BUILD IT LIVE IT



Builders FirstSource offers a complete solution for all of your building needs. With high quality lumber, roofing materials and a wide selection of building products, we can provide you with the best materials from the foundation to the roof of your home. We recognize the importance of offering products that meet your high standards and lumber and building materials are what we know best.

Midvale Lumber  
7380 S. 700 W. | Midvale, UT 84047

Heber City Lumber  
1690 S Hwy 40 | Heber City, UT 84032

SLC Millwork  
4711 W. 1730 S. | Salt Lake City, UT 84104

SLC Truss  
2560 W California Ave. | Salt Lake City, UT 84104

Spanish Fork Lumber  
1350 N. Main Street | Spanish Fork City, UT 84660

[www.bldr.com](http://www.bldr.com)



# NOT SLEEPING AT ALTITUDE?



Oxygenate your mountain home for better sleep, more energy, and no altitude sickness.



Adding oxygen to your bedroom can alleviate the symptoms of mountain sickness and insomnia while providing restful sleep and more energy throughout the day. ACT's proprietary technology lowers effective altitude by 7,000 feet so you can sleep as well as you do at sea level. As a result, you wake up feeling refreshed, energetic and ready to enjoy a full day of mountain activities.



**"Providing oxygen during sleep is a side-effect-free way to treat altitude related insomnia."**

— Peter Hackett, MD  
Institute of Altitude Medicine



For more information on Altitude Control Technologies, or to learn more about installing a safe, quiet, and effective oxygenation system in your mountain home, call:

**(406) 215.4771 or visit [ACT-O2.com](http://ACT-O2.com)**

ACT is the world leader in altitude simulation. Clients include: Federal Aviation Administration (FAA) • Harvard Medical School • Mayo Clinic • Nike • University of Colorado • Olympic Training Centers in 14 countries • U.S. Naval Air Systems Command • More than 50 medical schools and research institutions on five continents.

BUILDING CUSTOM HOMES TO  
*Complement Your Lifestyle*



801.910.7454 | [info@uplanddevelopment.com](mailto:info@uplanddevelopment.com) | [uplanddevelopment.com](http://uplanddevelopment.com)



# INTRODUCING THE NEW MAGNOLIA ESTATE COLLECTION

*Luxury Mountain View Homes, Above it All.*



**MOUNT LOAFER VIEW ESTATE**

*Offered at \$2,385,000 | 4BD | 5BA*



**CONTEMPORARY MOUNTAIN VIEW ESTATE**

*Offered at \$2,430,000 | 4BD | 7BA*



**MODERN MOUNTAIN PRESERVE ESTATE**

*Offered at \$2,667,000 | 4BD | 5BA*



**MAGNOLIA RETREAT VIEW ESTATE**


*Offered at \$2,873,000 | 4BD | 6BA*

Unobstructed mountain, valley and lake views. Modern and contemporary architectural designs. Amenities that capitalize on comfort and adventure. Above and beyond the crowds yet moments from charming small-town culture and modern-day conveniences. This is the new Magnolia Estate Collection at Summit Creek, an award-winning residential community perched amid the Wasatch Range in Woodland Hills. Built by Summit Creek's exclusive homebuilder, Magnolia Homes, the four under-construction retreats achieve an entirely new standard in mountain luxury in the greater Utah Valley area.



**SUMMIT  
CREEK**  
WOODLAND HILLS

801.639.0944 | [SummitCreekUtah.com](http://SummitCreekUtah.com)

Obtain the Property Report required by federal law and read it before signing anything. No federal agency has judged the merits or value, if any, of this property. All descriptions, depictions and renderings are provided solely for illustrative purposes and are subject to change. Equal Housing Opportunity. Summit Creek does not discriminate against any person(s) on the basis of race, color, religion, sex handicap, familial status, national origin, or sexual orientation. All trademarks are the property of their respective owner. © 2020, Panthera Development, LCC. 

Summit | Sotheby's  
INTERNATIONAL REALTY

**THE DIFFERENCE  
IS IN THE DETAILS.**









# 2020 PARK CITY AREA SHOWCASE of HOMES

AUGUST 28-30 **AND**  
SEPTEMBER 4-7

Both Fridays: 2 p.m. to 8 p.m.  
Both Saturdays, Sundays, and  
Labor Day Monday: 10 a.m. to 6 p.m.  
(see pullout map)

NOTE: Park City Area Home Builders Association  
takes no responsibility for any Showcase of Homes  
participants that are not open for public viewing  
during Showcase of Homes dates. All square footages  
listed are approximate.



Park City Area Home Builders Association

P.O. Box 980850  
Park City, UT 84098  
PHONE 435-645-9363  
info@pcahba.com • www.pcahba.com

Published in partnership with:

## Utah Media Group

4770 S. 5600 West,  
West Valley City, UT 84118  
Office: 801-204-6300  
www.utahmediagroup.com

PRESIDENT & CEO  
Brent Low

PROJECT TEAM  
Megan Donio, Publications Manager  
Camille Durtschi, Layout & Design

ADVERTISING  
Sally Steed, VP Advertising  
Trent Eyre, VP Advertising

ACCOUNT MANAGERS  
Pam Barnett  
Samantha Campbell  
Wendy Halliday

Guide to the Homes.....	18
Ticket Info.....	22
Showcase of Homes App.....	22
Showcase of Homes Sponsors.....	24
Welcome to the 2020 Showcase of Homes.....	30
PCAHBA Board of Directors/Officers.....	32
Frequently Asked Questions.....	34
<b>Showcase of Homes.....</b>	<b>42</b>

Cover photograph by Ezra Lee Design+Build [ezraleee.com](http://ezraleee.com)  
Home Renderings by Scott Roberts





# LANDMARKS WEST

UTAH'S PREMIER CUSTOM HOME BUILDER





# GUIDE TO HOMES



**1** Page #42 | Jaffa Group  
2810 Telemark Drive  
Solamere, Park City



**2** Page #44 | Ivory Homes  
2565 Ledger Way  
Park City Heights, Park City



**3** Page #46 | Tekton Builders  
4189 Moose Hollow Road  
Moose Hollow, Park City



**4** Page #48 | Repose Lifestyle Builders  
7325 Pineridge Drive  
Pineridge, Park City



**5** Page #50 | Alexander Design Build  
303 Peace Tree Trail  
Deer Vista, Heber City



**6** Page #52 | Montgomery Construction  
Management, LC  
136 West Deer Vista Lane  
Deer Vista, Heber City



**7** Page #54 | Montgomery Construction  
Management, LC  
13645 North Deer Canyon Drive  
Deer Vista, Heber City



**8** Page #56 | CD Construction  
11577 North Soaring Hawk Lane  
Soaring Hawk, Hideout



**9** Page #58 | Scharpf Construction  
11565 North White Tail Court  
Soaring Hawk, Hideout



**10** Page #60 | Big-D Signature  
3893 East Tuhaye Hollow  
Tuhaye, Kamas



**11** Page #62 | Cameo Homes Inc.  
9560 North Midnight Court  
Tuhaye, Kamas



**12** Page #64 | Chatwin Homes  
926 West 470 North  
Saint Prex, Midway



YOUR **DREAMS.** OUR **PASSION.**



 **Magleby**  
CONSTRUCTION

[maglebyconstruction.com](http://maglebyconstruction.com) • 435.602.6572



# GUIDE TO HOMES



**13** Page #66

**Timber Creek  
Custom Homes**  
433 North 850 West  
Saint Prex, Midway



**14** Page #68

**Chatwin Homes**  
45 West Farm Springs Lane  
Farm Springs, Midway



**15** Page #70

**Regal Homes, LC**  
592 South Appenzell Lane  
Appenzell, Midway



**16** Page #72

**H2 Homes**  
2888 East Brown Duck Mountain Circle  
Red Ledges, Heber City



**17** Page #74

**PureHaven Homes**  
2394 East La Sal Peak Drive  
Red Ledges, Heber City



**18** Page #76

**Red Ledges Homebuilding**  
472 North Red Ledges Village Way  
Red Ledges, Heber City

## COMPLETE YOUR *Dream Home* WITH BLINDMAN WINDOW COVERINGS



Whether you are building new or renovating – your home can be a reflection of yourself, your personality, your dream! At The Blindman we understand what you want and are ready to help you with the finishing touches that will make your dream home become reality.



FREE IN-HOME or VIRTUAL CONSULTATIONS

**London** - Factory Showroom:  
**801 692-2490**  
750 North 2800 West

**St. George** - Showroom:  
**435 652-9947**  
314 North 3050 East, Unit C







**P3 Windows is proud to introduce CityLine all-aluminum windows by Quaker.**



(801) 946-1678  
P3WINDOWS.COM  
4212 N FORESTDALE DRIVE #100  
PARK CITY, UT

See our windows in homes 6 and 13.

## 2 WAYS TO ENJOY 18 HOMES!

Rather you prefer to grab your mask and see them in person or sit back and tour them virtually from the comfort of your own home, these 18 magnificent homes will not disappoint!

### **Tickets available at [PCShowcaseOfHomes.com](https://PCShowcaseOfHomes.com) \$20 (all ages)**

Tickets are valid for both the traditional walk-through and the new virtual Showcase.

**1**

#### **To participate in the traditional walk-through tour:**

- Grab your mask, as they are required for entry into all Showcase homes.
- Put on clean socks and wear comfortable, easy to remove shoes.
- Load your ticket onto your smartphone and have it ready to present at each home.
- Download the app, view the map, start at any home and visit in any order you wish.
- Get inspired and enjoy!

**2**

#### **To participate in the new virtual tour:**

- Go to [www.PCShowcaseOfHomes.com/virtual](https://www.PCShowcaseOfHomes.com/virtual)
- Enter the 15 digit ticket number.
- View the homes in any order, as many times as you wish.
- Get inspired and enjoy!

#### **Download the Showcase app “Park City Showcase.”**



TRACK HOMES VISITED



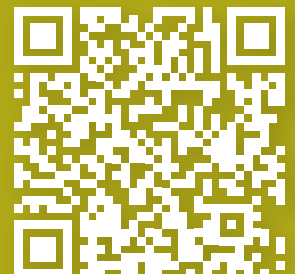
HOME & BUILDER INFO



HBA MEMBERSHIP  
DIRECTORY



TURN-BY-TURN  
DIRECTIONS TO  
EVERY HOUSE!







**LANDFORMS**  
DESIGN  
landforms.com  
**801 298 2240**

# SPONSORS

Presenting Sponsor

## ZIONS BANK®

WE HAVEN'T FORGOTTEN WHO KEEPS US IN BUSINESS®

Zions Bank Home Mortgage & Construction

Rob Jibson, Cory Holmes, and Kammra Montgomery have served the banking & financial services industry in Summit and Wasatch Counties for over two decades. They have over 50 years of combined mortgage and construction financing experience. The single most satisfying element of working in this industry for each of them are the relationships that they've built with their clients and business partners after a job well done.

Zions Bank Home Mortgage & Construction Group offers a wide variety of lending products. The phrase "We haven't forgotten who keeps us in business", is evident in our unique portfolio products that have been created to meet our client's unique and individual needs. From CondoTel financing to our 1xClose Construction loan program, and everything in between.

**For questions or inquiries contact:**

Rob Jibson @ (435) 658-5311 | Cory Holmes @ (435) 671-3580 | Kammra Montgomery @ (435) 671-8571

### Supporting Sponsors



It's been exciting to serve our clients for 22 years now, helping them come home to beautiful. We are thrilled to invite you to our Grand Opening going on now at our new showroom and new location!

Our clients rely on us to partner with them to create a beautiful, comfortable home to entertain, relax, and make lasting lifetime memories. Our seasoned, expert interior designers are the best Utah has to offer, with experience in every aspect of making your home uniquely yours through exceptional design. What is most remarkable about our design experience is how we integrate elements you already love and cherish, with beautiful new ones to bring it all together making it authentically, personally yours.

We specialize in starting from scratch with your new home build, or perhaps you are ready for a revamp of your existing home. Either way, we can help with all aspects such as tile selection to choosing the perfect sofa size to best fit your space.

Call today to schedule your complimentary in-home design consultation, 801-892-3444, or simply stop by our new showroom located at 6336 South State Street in Murray, Utah just southwest of Fashion Place mall.



Honey Bucket is here for your comfort. Serving Utah's finest with the cleanest portable restrooms, luxury restroom trailers, hot and cold water sinks, and hand-sanitizer stations, your guests will feel safe and will want to stay longer at your event. We are also here for your home remodeling needs. As well as our portable restrooms, we offer temporary fence, storage containers, and dumpsters to ensure your site stays safe and clean. Visit [HoneyBucket.com](http://HoneyBucket.com) for more information.



Mountain Land Design offers the latest in appliances, plumbing, and hardware for your home. Our showroom features the latest products installed and live for testing so you can touch your door knobs, gauge the water pressure of your shower, or turn up the flame on your range before you buy.

Salt Lake City, Utah 2345 South Main, 801-466-0990 | Provo, Utah 50 East 500 South, 801-932-0027 Jackson, Wyoming 485 West Broadway, 307-200-3313 | Boise, Idaho 627 North Dupont Ave. #B, 208-258-2479 Ketchum, Idaho 491 East 10th St., 208-576-3643 | [mountainlanddesign.com](http://mountainlanddesign.com)



Nerve offers a unique, simple and innovative approach to technology in today's luxury home. In addition to the traditional AV, Home Cinema and Media Rooms we offer green solutions such as lighting control, automated shades, networking and video conferencing. Our most exclusive offering is a custom Virtual/Interactive simulator that allows any space in your home to be transformed into a Golf / Sport / Racing playground. Our Design Team incorporates all of these amazing technologies into one simple system. Ask for a demonstration when you visit home #4!

Experience the Virtual/Interactive simulator during the showcase.

Win PRIZES playing Closest to the Pin Golf and Dodgeball contests.

[todd@nerve.tv](mailto:todd@nerve.tv) <http://nerve.tv> 801-913-6404



At Peppertree we pride ourselves on our service from start to finish.

Our designers take your thoughts, ideas and dreams and bring them to reality.

Each piece is built to order and designed specifically for each client.

Contact us about your project today and let us show you our commitment to delivering an unforgettable experience.

We also import the LEICHT line of Cabinetry made in Germany. For more than 80 years now, LEICHT has been causing a stir with premium kitchens.

Founded in 1986, Peppertree Kitchen & Bath has become one of the best-known cabinet manufacturers in Utah.

Visit one of our Showrooms or call to talk to one of our Designers.

West Jordan, Utah 7940 S. 1300 W. 801-565-1654 | Jackson, Wyoming 485 W. Broadway 801-565-1654

### Additional Sponsors



[ThermWise.com](http://ThermWise.com)





## YOUR LIFE CHANGES, YOUR HOME SHOULD CHANGE WITH IT.

We understand that building your dream home is not one-size-fits-all. That is why at Zions Bank we offer a variety of home construction loans\* to help you achieve the results as unique as you are.

**WINNER  
BEST OF STATE**



**UTAH 2020**

**Cory J. Holmes**  
NMLS #494844  
cory.holmes@zionsbancorp.com  
435-709-3264

**Rob Jibson**  
NMLS #532164  
rob.jibson@zionsbank.com  
435-658-5311

**Kammra Montgomery**  
NMLS#293439  
kammra.montgomery@zionsbank.com  
435-671-8571

# ZIONS BANK®

\*Subject to credit approval. Terms and conditions apply. Equal Housing Lender  Zions Bank NMLS #467014.  
A division of Zions Bancorporation, N.A. Member FDIC



**HABITATIONS**

RESIDENTIAL DESIGN GROUP

---

CUSTOM HOME DESIGN • SITE CONSULTING

(801) 476-1860

**HABITATIONSRDG.COM**



**LEICHT**  
**MOST**  
INNOVATIVE  
BRAND



Distributed by:

  
**Peppertree**  
Kitchen & Bath, Inc.

Visit Our Showroom  
7940 S. 1300 W.  
West Jordan UT 84088

801-565-1654  
[www.peppertreekitchen.com](http://www.peppertreekitchen.com)





## YOUR HIGH COUNTRY HAVEN

In a pristine swath of Utah high country is a private haven for connecting to nature, to each other, and to the things that matter most. Find a comforting home away with exclusive access to boundless acres of discovery, award-winning architecture, and world-renowned cuisine at Talisker Club, the only four-club/one membership community in Park City.

### NEW PROPERTY & HOME RELEASES

Custom Homesites from \$275K to \$2.9M | New Homes & Residences from \$850K to \$9M

Contact Us For Your Private Tour

435.333.3617 | [TaliskerClub.com](http://TaliskerClub.com) | Welcome Center Open Daily



BERKSHIRE  
HATHAWAY  
HomeServices  
Utah Properties

The Talisker Club materials and the features, prices and planned amenities are based upon current development plans which are subject to change without notice. Any and all recreational and golf amenities and facilities will be privately owned and operated as a club with mandatory membership and mandatory membership fees payable. This does not constitute an offer to sell or solicitation of an offer to buy real estate in any jurisdiction where prohibited by law or in any jurisdiction where registration or other legal requirements have not been fulfilled. ©2020 The names and logos are licensed and registered trademarks of Storied Deer Valley, LLC.

© 2020 BHH Affiliates, LLC. An independently owned and operated franchisee of BHH Affiliates, LLC. Berkshire Hathaway HomeServices and the Berkshire Hathaway HomeServices symbol are registered service marks of Columbia Insurance Company, a Berkshire Hathaway affiliate. Equal Housing Opportunity.





[www.StylesIronDoor.com](http://www.StylesIronDoor.com)  
(844) 334-9836



@stylesirondors

*Create the door of your dreams!*



## Welcome to the 2020 Park City Area Showcase of Homes



**O**n behalf of the Park City Area Home Builders Association, we would like to welcome you to the 2020 Park City Area Showcase of Homes.

The times may be challenging, but we have put together a group of the finest homes currently being constructed along the Wasatch back for your viewing pleasure, from Park City to Heber and Midway, as well as the beautiful Kamas Valley.

It is a privilege to be allowed to visit these gorgeous custom homes, and we humbly appreciate the confidence of our loyal contractors and homeowners for allowing us to do so under the current circumstances.

To make everyone as safe as possible, we have put into place a number of protective measures which are outlined for you when you purchase a ticket. Some homes may also have additional personal distancing requirements. We request that you please respect these requirements as you make your tour of these private homes.

For those of you who are unable to travel to our area at this time, and for those who are at high risk or would prefer not to make an in-person visit this year, we are so sorry not to see you, but, you don't have to miss out with the addition of our amazing virtual tour, which you can immerse yourself in from the comfort of your own laptop! Access is available with the purchase of a Showcase ticket.

It gives a truly in-depth view of each home and the work of the army of contractors and subcontractors, architects, interior designers and the many other ancillary trades who are involved in making the magic of one-of-a-kind construction.

The PCAHBA is dedicated to providing educational and social opportunities to this dedicated group of people, as well as providing a strong voice in decision making at local, state and national government levels to promote the well-being of our industry for the benefit of all those involved not just in homebuilding, but also in homeownership.

We'd like to give a very big thank you to our partners and sponsors: Zions Bank, Hamilton Park Interiors, Honey Bucket, Mountain Land Design, Nerve, PepperTree Kitchen & Bath, Dominion Energy and Build Magazine for their help in making this Showcase happen, and to our volunteers, who go above and beyond every year to make this event a success, but this year, more so than ever.

Thank you again for coming, we do hope you enjoy your visit. Please feel free to ask any questions you may have of the builders and trade partners who will be manning the homes, and please, don't forget to answer the survey we will be sending out to get your votes for the home you enjoyed the most.

**-2020 Showcase Committee**

### Thank you to our generous 2020 sponsors for their continuous support

#### **MONTHLY MEMBERSHIP SOCIALS**

Anvil Appliances/Anvil Cabinet & Mill  
Barclay Butera Interiors  
Black Dog Builders Inc.  
Ferguson Bath, Kitchen & Lighting Gallery  
Habitat for Humanity of Summit & Wasatch Co

Mountain Land Design Inc.  
Tanner Glass & Hardware  
Top Mark Floor & Design  
Zions Bank

#### **NEW MEMBER BREAKFASTS**

Roth Living



*Grand Opening at our New Showroom!*



**NEW SHOWROOM  
NEW LOCATION**

Experienced designers take your  
home from design concept to beautiful!

6336 South State Street Murray, UT 84107

**Hamilton Park**  
INTERIORS

*Come home to beautiful...*

# BOARD OF DIRECTORS



**Pierrette Tierney  
Magleby**  
President  
*Magleby Construction*



**Paul Montgomery**  
First VP  
*Montgomery  
Construction*



**Jake Jorgenson**  
Second VP  
*Jorgenson Builders*



**Amanda Trickett**  
Associate VP  
*The Closet Factory*



**Danny Moreno**  
Associate VP  
*Audio Video Systems*



**Steve Norr**  
Secretary  
*Peppertree Kitchen  
& Bath*



**Rob Jibson**  
Treasurer  
*Zions Bank*



**Mykal Muegge**  
Executive Officer  
*PCAHA*



**Sierra Prothers**  
Director of  
Membership Services  
*PCAHA*

## PAST PRESIDENTS

**Max Angle**  
Domicile

**Chris Quinton**  
Cameo Homes

**Doug Jardine**  
Jardine Construction

**Matt Russell**  
Russell & Co.

**Joe Rametta**  
Rametta & Co

**Preston Campbell**  
Go West Development

**Garrett Strong**  
Tall Pines Construction

**Todd Evans**  
Blackdog Builders

**Jason Moore**  
Plumb Level Square

**Jared Rakisits**  
Mountain Country Homes

**Scott Stubbs**  
Legacy Group Construction

**Dennis Loomis**  
Loomis Construction

**Will Dator**  
WF Construction

**Gary Hill**  
Midway Construction

**Mike Mercer**  
Aerie Construction

**Rich Williams**  
Williams Builders

**Richard Jaffa**  
Jaffa Group Design/Build

## 2020 BOARD OF DIRECTORS

### BUILDER DIRECTORS:

**Jenn Lewis**  
LGD Construction

**Rob Phelps**  
Hawkes Phelps Homes

**Keith Van Dyke**  
Riverwoods Construction

**Joe Witt**  
Joe Witt Construction

### ASSOCIATE DIRECTORS:

**Brinlee Hale**  
Insulation from Hale

**Brandon Hicks**  
Hamilton Park Interiors

**Dori Hohmann**  
Roth Living

**Trevor Inman**  
Honey Bucket

### UTAH HBA REPRESENTATIVES

**Max Angle**  
Domicile  
**Aaron Blanco**  
Modern Design + Build  
**Trevor Inman**  
Honey Bucket

**Kammra Montgomery**  
Zions Bank - Heber  
**Matt Russell**  
Russell & Co.


### NAHB REPRESENTATIVES

**Max Angle**  
Domicile  
**Greg White**  
Interstate Brick

## PARK CITY AREA HOME BUILDERS ASSOCIATION MISSION STATEMENT

The Park City Area Home Builders Association is a nonprofit organization serving the surrounding areas of Summit, Wasatch and Duchesne counties. It is a member-driven, volunteer organization of builders and associates who are leaders in the building industry and who are stalwart in ensuring a better community and a brighter future for the areas in which they live and work.

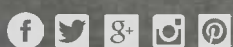




# whj

THERE ARE COMPELLING STORIES  
BEHIND ALL GREAT MOUNTAIN HOMES  
AND *WESTERN HOME JOURNAL* LOVES  
TO TELL THEM. AS THE GO-TO SOURCE  
FOR THE BEST IN ARCHITECTURE,  
CONSTRUCTION, AND DESIGN IN SIX  
MOUNTAIN RESORT TOWNS: *WESTERN  
HOME JOURNAL* HELPS OUR READERS  
**BRING THEIR DREAMS HOME.**

BEND | BOZEMAN/BIG SKY | FLATHEAD VALLEY  
JACKSON HOLE | PARK CITY | SUN VALLEY  
[WESTERNHOMEJOURNAL.COM](http://WESTERNHOMEJOURNAL.COM)



# FREQUENTLY ASKED QUESTIONS

FREE  
Map App



APP STORE  
PARK CITY SHOWCASE

## Do you have any tips?

- Wear comfortable, easy to remove shoes and clean socks.
- Leave unnecessary items in your vehicle.
- Use sanitization stations provided at each home before entry and upon exit.
- Take pictures and use the tag **#PCShowcaseOfHomes**.
- No food or drink is permitted in any of the homes.

## What are the COVID-19 protocols?

- Masks are required for entry into all Showcase homes.
- Sanitization stations will be provided at all Showcase homes.
- Attendees will be required to wear clean socks to walk through the Showcase homes.
- Social distancing will be required between groups.
- Doors will be left open. Please adhere to any signage requesting doors to remain closed.
- High touch surfaces will be disinfected frequently.

## Do I have to wear a mask?

Yes! You are required to provide your own mask and wear it on all Showcase properties.

## Why do I need to bring a clean pair of socks?

In order to reduce waste, we will not be providing shoe covers. Instead, we request that you remove your shoes and wear socks to protect the flooring of the homes. You will be given a complimentary shoe bag for you to keep and carry your shoes throughout the homes.

## Do I have to purchase a ticket for my child?

Children are urged not to attend. If your child is small enough to be carried throughout the entire Showcase, then you do not need to purchase a ticket. However, if the child will be walking through the homes, you will need to purchase a ticket for them.

## How many days are the tickets good for?

Each ticket is good for all 7 days of the Showcase, one entry per home, plus re-entry to two homes of your choice. Your ticket also gains you access to the virtual Showcase at **[PCShowcaseOfHomes.com/virtual](https://PCShowcaseOfHomes.com/virtual)**.

## Can I just follow the signs on the road or do I need to follow the map?

Although we try to have clear signage, we do not suggest you rely on them alone. Signs often get turned, blown over or moved so they are best used as a supplement to the map or your GPS using the QR codes provided.

## Why are floor plans not available?

The homes that are part of the Park City Area Showcase are custom homes and the floor plans and designs are the property of the builder, architect and/or home designer. Just as an artist does not want his/her work copied without consent, neither do our builders.

## Why are some of the houses outside of Park City?

The Park City Area Showcase of Homes is produced by the Park City Area Home Builders Association which encompasses Summit, Wasatch and Duchesne counties. Therefore, if there is a home outside of Park City but still within those counties, we are happy to include them in our Showcase.

## Where can I get the Park City Showcase app and why should I use it?

Search Park City Showcase in your app store or scan the QR code on page to download the app for home details, directions and more (page 22).





# Dream big.

## We have the windows for it.

When your home is part of a beautiful world-class mountain community, you need windows that are worthy. That's why so many local homeowners trust Pella Windows and Doors of Salt Lake City. And why Pella® windows are rated #1 by homeowners for highest quality.\*

Visit:

**[PellaSaltLakeCity.com](https://PellaSaltLakeCity.com)**

Find your Pella Showroom and Call Today:

**Sandy**, 9270 S 500 W, Suite A | **801-566-4131**



\*Study of homeowner perceptions of leading national brands. Study commissioned by Pella, 2019.  
©2020 Pella Corporation.



# *Your Dream Home* can become a **REALITY**



*Van Sickle Design & Drafting is the premier home designer that creates custom homes with a unique livability that is heavy on the aesthetic appeal. From mountain modern to rustic and everything inbetween. Each home is tailored to its site and features a floor plan catered to your needs. Nothing is repeated, each home is one of a kind. Visit our home in the Park City Showcase of Homes, #7 in Deer Vista, Park City.*



*bill@vansickledesigned.com*  
**801-694-9683**  
*vansickledesignanddrafting.com*





# INDEPENDENT AND FAMILY-OWNED WITH 30 YEARS OF EXPERIENCE

WALK-IN CLOSETS | GARAGES | MUD ROOMS | PANTRIES  
MURPHY BEDS | ENTERTAINMENT | COMMERCIAL PROJECTS

AVOID EXCESSIVE FRANCHISE FEES.  
CALL US TODAY TO SEE HOW WE CAN SAVE YOU MONEY ON YOUR  
NEXT PROJECT

**theclosetbutler.com | 801.728.0747**  
657 North Kays Dr., Unit C & D, Kaysville, UT 84037



# South Jordan

For Information Please Contact

**Brian Preece, Director of City Commerce**

801-254-3742; [bpreece@sjc.utah.gov](mailto:bpreece@sjc.utah.gov) [www.sjc.utah.gov](http://www.sjc.utah.gov)

"Best Places to Live" — *Money Magazine*



## Harvest Village



Shopping—Costco, Wal-Mart, Sportsman's Warehouse, VASA, Restaurants, Financial, Medical

## Mulligans Golf & Games



Driving Range, Golf Course, Mini-Golf, Batting Cages

## FrontRunner TOD/ SoJo Station



High Speed Commuter Rail/TOD — Class A Office, Apartments, Service Retail, Full Service Hotels (Existing & Under Construction)

## Daybreak



Mixed Use—Commerce Park, Residential, Senior Living, Retail—SoDa Row & Trail Crossing Shopping Center



20 Minutes from Downtown Salt Lake City and the Salt Lake International Airport

## The District



Lifestyle Center—Megaplex 20 Theatre, Restaurants, Shopping, Residential

## Redwood Road / SJ Parkway



Shopping — Towne Center, Restaurants, Residential, Library, City Offices  
Farmers Market -Saturdays 8am– 2pm

## RiverPark Corporate Center



Class A Office Space—Restaurants, Fitness Center, Jordan River Trail Access





*So nice to come home to...*

# Let Alpine Fireplaces

# FIRE UP

*Your Indoor & Outdoor Living Spaces*



**Fireplaces  
for your new home  
& remodeling  
projects!**

**Visit our showrooms to see  
our exciting options for  
your Indoor and Outdoor  
Living Spaces and see full  
burning displays!**

#### BOISE

111 South Stratford Drive  
208-246-8858

#### SUGARHOUSE

2236 South 1150 East  
801-487-4446

#### SANDY

9192 South 300 West  
801-566-0666

#### LEHI

782 West State Street  
801-768-8411

#### OREM

1417 South State Street  
801-225-4015

#### ST. GEORGE

393 East Riverside Drive  
435-628-9133

**IRONSTRIKE**  
THE YEAR FOR 2015

**KOZY HEAT**  
FIREPLACE

**astria**  
FIREPLACE



[www.alpinefireplaces.com](http://www.alpinefireplaces.com)

**GET A FREE QUOTE**

**800-550-0952**

Wood | Gas | Pellet | Electric | Gas Logs | Outdoor Fire Pits

## MEDICAL GRADE MASSAGE GUNS

Targets pain as well as relieves muscle spasms and stiffness.

Great for injury prevention, recovery, and enhancing range of motion.



In store  
~~\$299~~  
**\$99**



In store  
~~\$499~~  
**\$199**

**SAVE  
50%**

on all online orders  
with code  
**SUMMER50**

## KEEP COOL THIS SUMMER WITH NEW BAMBOO BEDDING

3X more breathable  
than cotton



In store only,  
Starting at  
~~\$99~~ **\$25**



## ALL SHEETS, PILLOWS, AND MATTRESSES ON SALE NOW!

In store only,  
Starting at  
~~\$99~~ **\$25**



In store only,  
Starting at  
~~\$1399~~ **\$699**



In store and Online

**SAVE 50%**

on all online orders  
with code  
**SUMMER50**

## Foggy Glasses?

### Anti Fog • Anti Static Lens Cleaner

Viewdoo is an anti-fog/anti-static glass cleaner that is safe on all lenses.

We've made three easy to use formulations,

Viewdoo-Gel, Viewdoo-Spray, and Viewdoo-Drop.

Unlike other multi-surface cleaners, these are safe on all lenses.

No alcohol, ammonia, or Silicone. Use the "Doo" to improve your view!



Safe on all lenses.  
Contains polymer  
protect your lens and fill  
in minor scratches.



Great for larger surfaces  
such as helmets,  
face shields, LCD and  
plasma screens.



Hard to reach surfaces?  
These drops are perfect for  
camera lenses, binoculars, touch  
screen electronics and more.



**ORDER NOW**  
[www.vantifog.com](http://www.vantifog.com)

Prestige Products Worldwide

## 3 Ply and KN95 masks AVAILABLE!

ORDER NOW

[www.prestigeproductsworldwide.com](http://www.prestigeproductsworldwide.com)



DISPOSABLE  
MEDICAL MASK



3 Layers Protection

- 50 count 3 Ply Masks  
\$19.99
- 5 Pack of KN95  
\$19.99
- 10 Pack of KN95  
\$29.00
- 1 Gallon Hand Sanitizer  
\$39.99



Small orders  
available for  
pick up at  
Powers  
Bedding

For Large Quantity Wholesale Pricing

Please Call 801-784-0328

Discounts Available

Visit us at **Powers Bedding**

The Shops at South Town Mall (Lower level near Macy's)

10450 S State ST., Sandy, Ut. 84070

[www.powersbedding.com](http://www.powersbedding.com) • 801-784-0328



# MINKY COUTURE

## BEST.BLANKET.EVER.



**801.682.8422 · WWW.MINKYCOUTURE.COM**

LAYTON  
780 N WOODLAND PARK DR  
LAYTON, UT

DRAPER  
138 E 12300 S, STE B  
DRAPER, UT

ST. GEORGE  
720 S. RIVER RD, STE A-105  
ST. GEORGE, UT

OREM  
128 S. STATE  
OREM, UT

SOUTH OGDEN  
930 CHAMBERS ST  
SOUTH OGDEN, UT

VISIT OUR WEBSITE AND RECEIVE 45% OFF USE CODE: **HOME45**

Special Prices above are not valid with any other offer and may not be combined. Some exclusions may apply. Expires 8-31-2020.

HOME  
1

# JAFFA GROUP

## 2810 TELEMAR DRIVE

Solamere, Park City

Jaffa Group is a full-service design-build firm offering complete architecture, construction, and interior design services. 2020 marks our 25th year in business. In looking back upon the many homes we have been honored to create or remodel (including those we are currently working on), we proudly identify the hallmark of every Jaffa Group project which is spaces that are as remarkable as they are livable. This house on Telemark Drive is no different.

Our client sought a contemporary home that would maximize views (without compromising those of the neighbors) on the last lot in the traditional Solamere neighborhood. To achieve this, we pushed the house as far up in the building envelope as possible and angled it to face Deer Valley's iconic ski

runs. Multi indoor living and outdoor terrace levels serve not only to optimize 6600 square feet of living space with the property's grade, but also to truly ground the house to its site and organically link the built environment to its natural surroundings.

In creating spaces that are truly livable and functional, it is critical to understand exactly how each will be used. This homeowner wanted opportunities for family and friends to gather throughout the house and enjoy the views. The dining room serves as the multi-function heart of this home complete with a main living level master bedroom and junior master. Repeating similar textures and building materials throughout the home connects the rooms to one another and to the outside.



TOTAL SQ. FT.

6,728

BEDROOMS

5

BATHROOMS

8

GARAGE BAYS

3

SCAN FOR DIRECTIONS



\$\$\$\$ = \$4M and over  
House is **NOT** For Sale

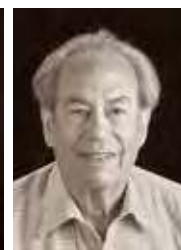
### JAFFA GROUP

435.615.6873  
scott@jaffagroup.com  
www.jaffagroup.com

ARCHITECT Jaffa Group  
INTERIOR DESIGNER Jaffa Group



SCOTT JAFFA



RICHARD JAFFA

### PCAHBA MEMBER SUBCONTRACTORS AND SUPPLIERS

BMC Building Materials  
Closet Factory  
Elume Distinctive Lighting  
Epic Windows & Doors  
European Marble & Granite

Honey Bucket  
Mountain Land Design Inc.  
Tanner Glass & Hardware  
Teerlink Cabinet





# JAFFA GROUP

DESIGN • BUILD

ARCHITECTURE



CONSTRUCTION



INTERIORS

EST. 1995

[JAFFAGROUP.COM](http://JAFFAGROUP.COM)

435.615.6873



HOME  
2

# IVORY HOMES

## 2565 LEDGER WAY

Park City Heights, Park City

Ivory Homes is proud to present our custom designed, Mining-inspired home for the 2020 Park City Showcase. This home blends Park City's historic past and today's contemporary styles into a bold new design that seamlessly bridges the gap between modern and mountain architecture.

The home is located in the new Park City Heights neighborhood with amenities that will include a private clubhouse, private pool, city park with pickle ball courts and playground, as well as an off-lease dog park. With direct access to miles of trails in and around the neighborhood, including the Historic Union Pacific Rail Trail that runs adjacent to the neighborhood, Park City Heights boasts the best in outdoor recreation access.

Park City Heights is also conveniently located just minutes from Park City Main Street, Deer Valley Resort, Park City Mountain as well as the highly ranked Park City Schools nearby. So whether you are looking for a full time place to call home or are in the market for your mountain retreat we have you covered. Please visit us today to see why Park City Heights is the next place you will want to call home.



TOTAL SQ. FT.

6,151

BEDROOMS

5

BATHROOMS

3 full 2 half

GARAGE BAYS

3

SCAN FOR DIRECTIONS



\$\$\$ = \$1M - \$2M

House is For Sale

CONTACT: Troy Goff

Ivory Homes  
435.729.0550  
troyg@ivoryhomes.com

IVORY HOMES

435-729-0550

troyg@ivoryhomes.com

www.ivoryhomes.com

ARCHITECT Ivory Homes  
INTERIOR DESIGNER Ivory Homes



TROY GOFF

### PCAHBA MEMBER SUBCONTRACTORS AND SUPPLIERS

BMC Building Materials  
Hansen All-Seasons Insulation

Hearth & Home Distributors  
Mountain Land Design Inc.





 **IVORYHOMES**  
Utah's Number One Homebuilder®

## PARK CITY HEIGHTS

### 2597 LEDGER WAY, PARK CITY

Enjoy an incredible lifestyle in the Ivory Homes Park City Heights community. There is a brand new clubhouse that has a large kitchen, sliding doors that open to the patio and future park, an upstairs game room, a future pool and more! Residents enjoy an abundance of trails throughout and adjacent to the neighborhood. Park City Heights is within the boundaries for the highly desirable Park City School District with schools such as McPollin Elementary, Ecker Hill Middle School, Treasure Mountain Junior High and Park City High School. It is a short 10-15 minute drive to Park City Mountain Resort, Deer Valley and Historic Main Street. Come visit this one of a kind community today!

- Custom home designs
- 10,518-12,229 sq. ft. lots
- Community Clubhouse
- Future pool & park
- 10 minutes to ski resorts
- Abundance of trails
- Park City School District



**CALL NOW: 435-657-0444**

LEARN MORE:



PREFERRED LENDER FOR IVORY HOMES

**MOMENTUMLOANS**

BUILT FOR BORROWERS



HOME  
3

TEKTON BUILDERS

4189 MOOSE HOLLOW ROAD

Moose Hollow, Park City

**A** hhhh, the smell of fresh mountaintop air with breathtaking views. The sounds of silence and very special encounters with wildlife. Escape the hustle and bustle for a moment and take in the charm of this "Barn" inspired home and proximity to open wilderness areas. Don't let the word Barn mislead you. This is a home of eloquence and luxury design.

Affectionately referred to as the "Grandparents Dream Barn", this estate home lies in Moose Hollow, a gated community overlooking Jeremy Ranch in Park City. It has been designed as a family centered, lifestyle residence and constructed to satisfy even the most discriminating grandchildren. Subtle design choices have also been made that will allow the owners to safely live as they grow older. This is a magnificent and inspiring home for all ages.

Big or small, wide, narrow or tall Tekton Builders loves to build them all. We have so much passion and commitment towards our residential clients. To us, every home, every client and every project is important and unique. "Unique" requires a special kind of builder with the aptitude and character of a friend and trusted advisor. Alan Newman Principal of Tekton Builders works hard to be just that. If it's street cred you're after, then the Tekton team can provide you with over 75 years and \$3 billion dollars' worth of direct construction experience. It's not bragging, just a way of saying that we bring a tremendous amount of talent and value to every project.



TOTAL SQ. FT.

6,495

BEDROOMS

4+ caretakers  
quarters

BATHROOMS

5 full 1 half

GARAGE BAYS

4

SCAN FOR DIRECTIONS



\$\$\$ = \$2M - \$4M

See Agent

CONTACT: ShuRee Sacks  
Equity Real Estate Select  
801.710.8888  
shuree10@gmail.com

TEKTON BUILDERS

801.592.3311

anewman@tektonutah.com

www.tektonutah.com

HOME DESIGNER Stomping Ground Home Design  
INTERIOR DESIGNER Jaime Newman Design



ALAN NEWMAN



ROY BARTEE



JAMES PEACOCK



LACEY CORTISSE

PCAHBA MEMBER SUBCONTRACTORS AND SUPPLIERS

5 Star Building Products, LLC  
Alpha Hydronics LLC  
Arizona Tile  
BTM Construction LLC

Davis Concrete Enterprises  
Duarte's Electrical Services  
Duerden's Appliance  
Element Land Surveying

Jones Mechanical, Inc  
Jones Paint & Glass  
On Top Roofing  
Zanos Tile LLC

PCShowcaseOfHomes.com

2020 PARK CITY AREA SHOWCASE OF HOMES





**TEKTON**  
BUILDERS

**tektōn** (τέκτων): Artisan, Craftsman

TEKTONUTAH.COM

IG: @TEKTONUTAH

For more information  
Please Scan QR Code



*A special Thank You to the Design Team:*

*Stomping Ground Home Design*  
*adam.stompingground@gmail.com*  
*(801) 400-9866*

*Jaime Newman Design*  
*jnewman.design@gmail.com*  
*(801) 518-5654*

HOME  
4

## REPOSE LIFESTYLE BUILDERS

## 7325 PINERIDGE DRIVE

Pineridge, Park City

**A**rchitectural enthusiasts and discerning homeowners will appreciate the use of light, flow, vistas and even acoustics in every space of this efficient and thoughtfully designed home.

Floor to ceiling windows overlook 780+ acres of Toll Canyon green space, invite the outdoors inside with automated moving glass walls opening to a private shaded patio/deck with water-feature and breathtaking views. Automated screens ensure uninvited guests won't crash your party.

Maintaining a light footprint, a NERVE exclusive DC lighting system runs cooler with long-life LED's, indirect LEDs highlighting elegant architectural features. Nature provides 4 seasons of comfort with integrated passive solar warming on sunny winter days; and automated solar shades reduce heat in the summer.

Lower-level walkout invites you on journey through the Route 66 themed Arcade. Next enter virtual reality in the NERVE golf / sport / racing simulator. From playground to world-class cinema; experience the 25 seat private theater boasting a 20ft 4K HDR image, a 27 speaker Dolby Atmos system & D-Box Motion.

Drawing on decades of experience, the REPOSE team enhances your lifestyle through fully automated smart homes that are timeless in design, style, and always trendsetting.

Greater than the sum of its parts, a REPOSE lifestyle build emanates energy efficiency, serenity, relaxation and comfort.



TOTAL SQ. FT.

9,827

BEDROOMS

7

BATHROOMS

6 full 2 half

GARAGE BAYS

3+ RV

SCAN FOR DIRECTIONS



\$\$\$ = \$4M and over  
House is For Sale

CONTACT: Ramon Gomez  
Berkshire Hathaway  
435.640.0590  
rgomez@bhhsutah.com

## REPOSE LIFESTYLE BUILDERS

435-333-1313

todd@reposeparkcity.com

www.reposeparkcity.com

HOME DESIGNER Todd Astill, Repose  
INTERIOR DESIGNER Todd & Rebecca Astill

TODD  
ASTILLREBECCA  
ASTILLJARED  
VANDERVEUR

## PCAHBA MEMBER SUBCONTRACTORS AND SUPPLIERS

Ferguson Bath  
Kitchen & Lighting Gallery  
NERVE Inc.

Pella Windows & Doors Mountain West  
Zions Bank



# THE MOST DESIRABLE HOME FEATURES & STYLES IN 2020

- 01. OUTDOOR LIVING SPACES**  
Be closer to nature; enjoy your homes' surroundings.
- 02. FLEX SPACES & HOME OFFICES**  
Multipurpose and multifunctional spaces.
- 03. CONTEMPORARY & OPEN-CONCEPT**  
Floor plans perfect for family, ideal for entertaining.
- 04. HEALTH & WELLNESS**  
Experience wellness and better health at home.
- 05. STORAGE & DISPLAY SPACES**  
Unique places to showcase your keepsakes.
- 06. IN-LAW & AU PAIR SUITES**  
Enjoy family and friends with privacy for everyone.

## FREE Video

### 18 Things To Know Before You Build

How To Maximize Space and Flow, and Integrate Organic Materials and Style In Your Home.

Available at: [ReposeParkCity.com/know](https://ReposeParkCity.com/know)

**REPOSE**  
LIFESTYLE BUILDERS

435-333-1313 | [ReposeParkCity.com](https://ReposeParkCity.com)

# TECHNOLOGIES THAT DEFINE TODAY'S LUXURY HOMES

## 1. SMART-HOME HOME AUTOMATION

Integrated systems for any occasion: entertainment, comfort and security.

## 2. ECO-FRIENDLY ENERGY EFFICIENT

Eco-sensitive home building in harmony with it's surroundings.

## 3. GAME ROOMS PRIVATE THEATERS

Family-friendly virtual/interactive playgrounds + world-class cinema.

**FREE Report**

How Home Automation, Eco-friendly, and Entertainment Technologies Stack Up

Available at: [Nerve.tv/rankings](https://Nerve.tv/rankings)

**NERVE**  
PARK CITY

801-913-6404 | [nerve.tv](https://nerve.tv)



HOME  
5ALEXANDER DESIGN BUILD  
303 PEACE TREE TRAIL  
Deer Vista, Heber City

This stunning mountain contemporary home takes full advantage of the magnificent views around it with outdoor living spaces on every level. Staggered roof lines, curving walls of glass, brown cedar, and rich stone all overlook the Jordanelle Reservoir and its surrounding mountains.

Enter through the front door into a light-filled, open floor plan. An impressive floating staircase of metal and rich wood adds to the open feel. Massive windows and a sliding glass door let in an abundance of light to the dining room, living room and generously equipped kitchen.

The secluded master retreat features a large walk-in closet, a curbless shower, a soaking tub and wall to wall windows overlooking a mountain dreamscape. From the master bedroom, step outside onto a private deck to enjoy fresh

summer breezes.

The lower level of this home features even more glass and views, with a kitchenette, family room and game room making it perfect for entertaining. Each lower level bedroom has an ensuite bathroom, and two of the bedrooms share a private deck from which to enjoy the outdoors. A custom wine room completes the lower level.

The upper level consists of a flex room and a rooftop deck from which to experience the mountain air and really escape from it all.

Alexander Design Build relies on a group of outstanding subcontractors and craftsmen who share in owner Jared Rakisits's philosophy of quality and creativity. Together, they bring the finest products and sustainable solutions to complement your home and your unique style.



TOTAL SQ. FT.

5,392

BEDROOMS

4

BATHROOMS

6

GARAGE BAYS

3

SCAN FOR DIRECTIONS



\$\$\$ = \$2M - \$4M

House is For Sale

CONTACT: Zachary White

Utah Luxury Group

435.640.9722

zach@utahluxurygroup.com

## ALEXANDER DESIGN BUILD

435.640.6749

info@alexanderdesignbuildpc.com

www.alexanderdesignbuildpc.com

ARCHITECT Alexander Design Group

INTERIOR DESIGNER King Design Group



JARED RAKISITS

## PCAHBA MEMBER SUBCONTRACTORS AND SUPPLIERS

Custom Finish Supply Company, Inc.  
Epic Windows & Doors  
Ferguson Bath, Kitchen & Lighting Gallery  
Hearth & Home Distributors  
Honey Bucket

King Design Group  
Paul Dowland Tile and Countertops  
RC Ornamental  
Sierra Pacific Windows  
Silver Mountain Glass LLC





# DEER VISTA

ROOM TO BREATHE



We invite you to join Park City's most exciting new community where you can find solitude and room to breathe while living only minutes away from Historic Main Street. Deer Vista is a gated, private community with remarkably low HOA dues. Residents enjoy direct recreational access and coveted panoramic views of Jordanelle Lake and the Wasatch Back, including Deer Valley® and Park City Ski Resorts. Call today for generous developer incentives.

Learn more at [DeerVista.com](http://DeerVista.com) | Home sites starting in the \$200's

ROD BRADSHAW 435.731.0305  
[rod.bradshaw@sothebysrealty.com](mailto:rod.bradshaw@sothebysrealty.com)



Summit  
**Sotheby's**  
INTERNATIONAL REALTY

## 136 WEST DEER VISTA LANE

Deer Vista, Heber City

This outstanding Otto-Walker designed home sits on one of the most impressive lots in the coveted gated community of Deer Vista Estates, with breathtaking views of Park City's ski resorts and Jordanelle Reservoir on one side and adjacent to expansive open space on the other. The warm mountain contemporary exterior, with its cedar siding and natural stone, invites you to come in and enjoy the peaceful interior with its well-flowing floor plan and clean finishes. The pristine views can be enjoyed from each room on both levels, including four bedrooms, two large great rooms, large concrete decks and patios, a hearth room and more.

Paul Montgomery, owner of Montgomery Construction Management, has worked exclusively in residential construction for 37 years and has been in business in the Park City/Summit County area since 1993. His expertise lies in his

experience and intimate knowledge of the construction process, plus his ability to communicate and interact well with his clients and to visualize the final product that they have in mind.

Since joining the Park City Area Homebuilders Association in 2002 Paul has thoroughly enjoyed building relationships with his peers in the construction industry as well as working to support the industry and the association by serving on various committees, on the board of directors and currently as the first VP.

Paul's two favorite business slogans are "A good friend is a careful listener... So is a good Custom Home Builder" and "My best finished product is a happy client." Paul works hard to live up to those standards and to provide each client with personalized one-on-one attention and a pleasant home-building experience.



TOTAL SQ. FT.

5,200

BEDROOMS

4

BATHROOMS

4 full 1 half

GARAGE BAYS

3

SCAN FOR DIRECTIONS



\$\$\$ = \$2M - \$4M

House is For Sale

CONTACT: Rod Bradshaw

Summit Sotheby's

435.731.0305

rodbradshaw29@gmail.com

MONTGOMERY CONSTRUCTION  
MANAGEMENT, LC

435.901.2833

paul@montgomeryconstruction.us

www.montgomeryconstruction.us

ARCHITECT Otto/Walker Architects  
INTERIOR DESIGNER Design Pacific

PAUL MONTGOMERY

## PCAHBA MEMBER SUBCONTRACTORS AND SUPPLIERS

All West Communications  
Bella Tile and Stone  
BMC - Building Materials & Construction Solutions  
Elume Distinctive Lighting  
Ferguson Bath, Kitchen & Lighting Gallery  
Finch Welding & Fabrication Inc.  
Honey Bucket

Insulation From Hale  
Kip Slaugh & Associates  
P3 Windows and Doors  
Roth Living  
Silver Mountain Glass LLC  
Simple As Dirt, LLC



"A good friend is a careful listener...  
So is a good Custom Home Builder."



"My best finished product is a happy client"

**Paul Montgomery, Owner**  
[paul@montgomeryconstruction.us](mailto:paul@montgomeryconstruction.us)

**435.901.2833**  
[www.montgomeryconstruction.us](http://www.montgomeryconstruction.us)



*"My expertise lies in my experience and intimate knowledge of the construction process,  
plus my ability to communicate and interact well with my clients  
and to visualize the final product they have in mind."*

- Paul Montgomery, Owner

• RELATIONSHIPS • EXPERIENCE • VALUE • COMPATIBILITY

## Simple As Dirt, LLC

Providing Quality Residential Excavation Services



Paul Montgomery  
Phone: 435.901.2833

[Paul@MontgomeryConstruction.us](mailto:Paul@MontgomeryConstruction.us)  
[www.MontgomeryConstruction.us](http://www.MontgomeryConstruction.us)



HOME  
7

## MONTGOMERY CONSTRUCTION MANAGEMENT, LC

## 13645 NORTH DEER CANYON DRIVE

Deer Vista, Heber City

**B**ill Van Sickle specializes in one of a kind custom homes tailored to the needs and style of the client. Bill designs each home with details that enhance the style and expression of the home with open flowing layouts and special relation from room to room. Each home is unique and designed to fit the lot and enhance the views with a strong belief that "Every home should be a work of art, every time."

This unique home was designed to cascade down the hill and allow for an enhanced expression of the views and the homes' relationship to the environment. The home has no shortage of glass to picture frame the views and bring the indoor/outdoor environment together. Allowing for comfortable living and large entertainment spaces, a modern home with warm materials throughout, it fits nicely in its mountain environment. Waking up to the glass like lake in the morning will take your breath away.

Paul Montgomery loves his job creating fine custom homes in the mountains where he was raised. After 37 years in the industry, his expertise lies in his experience and intimate knowledge of the construction process, plus his ability to communicate and interact well with his clients and to visualize the final product that they have in mind.

Since joining the Park City Area Homebuilders Association in 2002 Paul has thoroughly enjoyed building relationships with his peers in the construction industry as well as working to support the industry and the association by serving on various committees, on the board of directors and currently as the first VP.

Paul's two favorite business slogans are "A good friend is a careful listener... So is a good Custom Home Builder" and "My best finished product is a happy client." Paul works hard to live up to those standards and to provide each client with personalized one-on-one attention and a pleasant home-building experience.



TOTAL SQ. FT.

5,100

BEDROOMS

5

BATHROOMS

5 full 2 half

GARAGE BAYS

3

SCAN FOR DIRECTIONS



\$\$ = \$1M - \$2M

House is For Sale

CONTACT: Rod Bradshaw

Summit Sotheby's

435.731.0305

rodbradshaw29@gmail.com

MONTGOMERY CONSTRUCTION  
MANAGEMENT, LC

435.901.2833

paul@montgomeryconstruction.us

www.montgomeryconstruction.us

ARCHITECT VanSickle Design and Drafting  
INTERIOR DESIGNER Design Pacific

PAUL MONTGOMERY

## PCAHBA MEMBER SUBCONTRACTORS AND SUPPLIERS

All West Communications  
Bella Tile and Stone  
BMC - Building Materials & Construction Solutions  
Elume Distinctive Lighting  
Epic Windows & Doors  
Ferguson Bath, Kitchen & Lighting Gallery  
Hearth & Home Distributors

Honey Bucket  
Insulation From Hale  
Kip Slough & Associates  
Paul Dowland Tile and Countertops  
Silver Mountain Glass LLC  
Simple As Dirt, LLC





# DEER VISTA

ROOM TO BREATHE

Park City's new and exciting gated community is private and only minutes away from Main Street. With no membership and low HOA dues, residents enjoy coveted panoramic views of the Jordanelle Lake, Deer Valley®, and Park City ski resorts.

Learn more at [DeerVista.com](http://DeerVista.com)

**ROD BRADSHAW** 435.731.0305 | [rod.bradshaw@sothebysrealty.com](mailto:rod.bradshaw@sothebysrealty.com)

Summit | **Sotheby's**  
INTERNATIONAL REALTY

This material is based upon information that we consider reliable, but because it has been supplied by third parties, we cannot represent that it is accurate or complete, including price, or withdrawal without notice; square footage is an estimate only. ©MMXIX Sotheby's International Realty Affiliates, Inc. All Rights Reserved. Sotheby's International Realty® is a licensed trademark to Sotheby's International Realty Affiliates, Inc. An Equal Opportunity Company. Each Office Is Independently Owned And Operated. Copyright© Summit Sotheby's International Realty 2019



HOME  
8

CD CONSTRUCTION

## 11577 NORTH SOARING HAWK LANE

Soaring Hawk, Hideout

**T**ucked into a knoll in Soaring Hawk sits a modern mountain masterpiece tailored to meet its owners every need. This stunning, timeless, design by Jean Yves Lacroix showcases the surrounding mountains through walls of windows in every room.

Three gorgeous bi-fold doors in the main living areas frame views of the Wasatch and Timpanogos. Custom cabinetry, engineered quartz, and a stunning rock and metal fireplace combine to create the "Great Room", with gourmet kitchen and "secret" Pantry for sumptuous living or entertaining. The luxurious master retreat beckons you with its many features such as deck access and oversize shower, contemporary plumbing fixtures, and well-appointed walk-in closets. Two spacious guest suites are included, one on the upper and one on the lower level, plus an efficiently laid out Bunk Room,

all opening onto exterior patios and entertaining areas. The main level is also home to a Recreation Room with stunning Timpanogos views.

Unique carpentry, expansive engineered wood floors, along with the interior finish palette of colors and textures from interior designer Felicity Gardner of Felicity Gardner Interior Design finish off this exceptional residence.

Scot Davis' CD Construction brings to fruition another quality and unique custom home. With over 30 years experience, the CD Construction team builds premier, award-winning luxury homes, ranging from ultra-contemporary, rustic mountain, and the extreme elegance spectrum throughout Utah.



TOTAL SQ. FT.

3,362

BEDROOMS

4

BATHROOMS

4 full 1 half

GARAGE BAYS

2

SCAN FOR DIRECTIONS



\$\$\$ = \$2M - \$4M

House is **NOT** For Sale

CD CONSTRUCTION

435.671.0971

scot@cdconstructioninc.com

www.cdconstructioninc.com



SCOT DAVIS

ARCHITECT Jean Yves Lacroix

INTERIOR DESIGNER Felicity Gardner Interior Design

## PCAHBA MEMBER SUBCONTRACTORS AND SUPPLIERS

Audio Video Systems  
Builders First Source  
Closet Factory  
Davis Concrete Enterprises

Ferguson Bath, Kitchen & Lighting Gallery  
Hearth & Home Distributors  
High Mountain Construction  
Mountain Land Design Inc.



**"WE GOT  
JUST  
WHAT WE  
WANTED  
AND WE  
LOVED  
THE  
PROCESS."**



**THE SMART NEW WAY TO  
BUILD YOUR LUXURY HOME  
BETTER EXPERIENCE.  
BETTER RESULT.  
BETTER VALUE.**

**SEE US AT HOME #8 IN SOARING HAWK, PARK CITY AREA SHOWCASE OF HOMES**



Felicity Gardner, Interior Designer  
Murray Gardner, Project Leader

**GARDNER GROUP**  
LUXURY HOME CREATIONS

Park City UT | 435-640-5184 | [gardnergroupparkcity.com](http://gardnergroupparkcity.com)

Visit our new web site [gardnergroupparkcity.com](http://gardnergroupparkcity.com) and download our free e-book  
"Top 7 Things to Know Before Building Your Park City Dream Home"

HOME  
9

## SCHARPF CONSTRUCTION

## 11565 NORTH WHITE TAIL COURT

Soaring Hawk, Hideout

Just minutes from Park City's beautiful resorts, this mountain contemporary home from Scharpf Construction captures panoramic multi-million dollar vistas of Jordanelle Reservoir and Deer Valley, while maintaining a small-town vibe.

The main level master suite includes a fireplace, large en suite with walk-in closet, laundry and a private deck to enjoy sunrise/sunsets with glorious year-round views. Open concept main level kitchen and great room welcome guests with space & beautiful finishes, including Thermador appliances, which take the kitchen to another level. A spacious deck allows for dining and entertaining, while enjoying the ambiance of the outdoors, including seating around a fire pit for those seasonal temperature changes & gas for grilling. Head downstairs to find three cozy bedrooms. The guest master is a small

sanctuary, with its own en suite. The final two bedrooms are joined by a large bathroom with dual vanities. The lower level family room includes a fireplace for those chilly mornings/evenings, an additional laundry, and a wet bar for convenience & entertaining.

Scharpf Construction is no stranger to the expectations of resort town luxury residences, with 36 years of experience in the Vail Valley and Tamarack, Idaho, prior to relocating to the Park City area in 2015. Since coming to the area, Scharpf Construction's focus has been on remodeling and new residential construction. In collaboration with King Design Group, Scharpf Construction provides a beautiful finished product, with focus on quality and value, showing that luxury living is possible, even when building on a budget.



TOTAL SQ. FT.

4,106

BEDROOMS

4

BATHROOMS

3 full 1 half

GARAGE BAYS

2

SCAN FOR DIRECTIONS



\$\$ = \$1M - \$2M

House is For Sale

CONTACT: Zachary White

Utah Luxury Group

435.640.9722

zach@utahluxurygroup.com

Alexander Design Build  
Arizona Tile  
Bedrosian Tile and Stone  
BMC-Building Materials & Construction  
Builders First Source  
Ferguson Bath, Kitchen & Lighting  
Gallery

Kitchen & Bath Distinctions by Southwest  
Plumbing

## SCHARPF CONSTRUCTION

435-300.0123

scharpfconstruction@gmail.com

HOME DESIGNER Alexander Design Build  
INTERIOR DESIGNER King Design Group



TONY SCHARPF

## PCAHBA MEMBER SUBCONTRACTORS AND SUPPLIERS

Hearth & Home Distributors  
High Country Homes  
Honey Bucket  
King Design Group  
Kip Slaugh & Associates  
Kitchen & Bath Distinctions by Southwest  
Plumbing

Marrwall  
Mountain Land Design Inc.  
On Top Roofing  
RC Ornamental  
Sierra Pacific Windows  
Silver Mountain Glass LLC  
Witt Excavation





# More than just the cleanest ...

Did you know Honey Bucket offers other services than just portable restrooms? We can help you with:

- Hot and cold water sinks
- Hand-sanitizer stations
- Luxury restroom trailers
- Temporary fence
- Crowd control barricades
- Secured containers
- Job site temporary offices
- Dumpsters

All serviced by our dedicated and professional staff to ensure you, your employees or guests are comfortable and safe. Contact us today to find out more.



## EXPERIENCE<sup>the</sup> DIFFERENCE

[HoneyBucket.com](http://HoneyBucket.com)

801-972-9580

**F**resh from celebrating our 50th anniversary as Utah's #1 building contractor, and on the eve of our 20th anniversary building in Park City, Big-D Signature welcomes you to share our most recent success story at Tuhaye. The Whispering Hawk retreat is a luxurious inviting floor plan that opens to breathtaking water and mountain views of Park City. This contemporary design captures an intimate lifestyle with rough sawn timber beamed ceilings, locally quarried stone integrated with an abundance of natural light filled rooms. From rustic warm natural wood floors to the handcrafted stone tops, you will feel like this is your own personal retreat where you can finally relax. Cozy mornings and family sunset evenings spent on the large decks are your reward. Award winning architect Reid Smith uses local and natural

materials to create architecture that complements and respects the site while celebrating the built environment and innovation. Included in this rustic sanctuary is every modern creature comfort, from Thermador appliances to efficient LED light fixtures. Whether your having a quiet night in front of your Master Suite fireplace after a family game night before the kids go to bed in the Bunk Room or an evening barbecue on the outdoor living deck watching the stars — isn't this where you want to be?



TOTAL SQ. FT.

4,152

BEDROOMS

4

BATHROOMS

5

GARAGE BAYS

3

SCAN FOR DIRECTIONS



\$\$\$ = \$2M - \$4M

House is For Sale

CONTACT:

Tuhaye Sales Team

435.333.3617

info@taliskerclub.com

## BIG-D SIGNATURE

435.255.7664

bcrawford@big-d.com

www.bigdsignature.com

ARCHITECT Reid Smith Architects  
INTERIOR DESIGNER Design Collective West

BRADY CRAWFORD

## PCAHBA MEMBER SUBCONTRACTORS AND SUPPLIERS

Insulation From Hale  
Jones Mechanical, Inc  
Mountain Land Design Inc.On Top Roofing  
RC Ornamental  
Tanner Glass & Hardware



# Building for the Bigger Picture



For more than 50 years, **Big-D Signature** has worked diligently to build homes and create spaces that begin with ultimate livability as the priority. And while we take tremendous pride in aesthetics and craftsmanship, our definition of success could never be complete without the strong relationships we forge—with our clients, our team, and our community—along the way.

**EXCEPTIONAL MOUNTAIN RESIDENCES AND RESORT DEVELOPMENT SINCE 1967**

PARK CITY, UT | JACKSON, WY | BOZEMAN, MT | [WWW.BIGDSIGNATURE.COM](http://WWW.BIGDSIGNATURE.COM)

The developer of Moondance, Ironwood Resort Development, is a boutique real estate firm specializing in luxury residential and resort properties throughout the Rocky Mountain west. Each project blends the best of the modern world with a timeless aesthetic — ensuring that every home fulfills the desires of buyers for today, and for their grandchildren in the future.

Designed by Otto/Walker Architects, this limited collection of only 20 mountain contemporary homes is located within the Talisker Club — Tuhaye community, between the 7th, 8th and 9th holes of the Mark O'Meara Signature Championship golf course. Encircling the 3.4-acre Moondance Park, the neighborhood is conveniently situated within walking distance of the Talisker Club — Tuhaye club amenities and community trail system.

The open-concept interiors — envisioned by the design team at Park City's CCDG Interiors — showcase a fresh take on mountain decor for carefree living and easy entertaining with multiple outdoor spaces and sweeping golf course views. Both warm and cool palettes are available for interior finishes selection.

The homes are masterfully assembled by renowned builder, Cameo Homes Inc. Cameo Homes is proud to be celebrating 45 Years of Business and making the same commitments to their clients that were made back in 1976- Integrity, Trust and Performance.



TOTAL SQ. FT.

3,600

BEDROOMS

4

BATHROOMS

4 full 2 half

GARAGE BAYS

3

SCAN FOR DIRECTIONS



\$\$\$ = \$2M - \$4M

House is For Sale  
CONTACT:Talisker  
435.333.3617  
taliskerclub.com

## CAMEO HOMES INC.

435-315-3267

info@cameohomesinc.com  
cameohomesinc.comARCHITECT Otto/Walker Architects  
INTERIOR DESIGNER CCDG InteriorsBRANDON  
QUINTONCHRIS  
QUINTONRYAN  
QUINTON

## PCAHBA MEMBER SUBCONTRACTORS AND SUPPLIERS

Ferguson Bath, Kitchen & Lighting Gallery  
Honey Bucket  
I-D Electric  
Mountain Land Design Inc.Sierra Pacific Windows  
Sunroc Building Materials  
Timber Ridge Landscaping, Inc.



# MORE WAYS TO LIVE YOUR PARK CITY DREAM

From custom estate homesites and cabin homes to ski-in/ski-out condos,  
Talisker Club presents Park City's widest selection of luxury real estate.  
Come find your private high country haven.

## OPEN CONCEPT, OPEN MOUNTAIN VIEWS

### Whispering Hawk

Offering 3,059 SF, these 4-bed, 5-bath homes present open floorplans with mountain and golf views. Now available.

**\$2,280,956**



## MOUNTAIN MODERN STEPS FROM A NEW PARK

### Moondance

With up to 3,600 SF, these 4-bed, 4-full-bath homes offer effortless access to club amenities. Now available.

**\$2,549,000**



## SHARED OWNERSHIP, FULL CLUB MEMBERSHIP\*

### Morningstar

Along emerald fairways with 5,786 SF, these 5-bed, 5-bath, 1/8 deeded-interest homes offer shared ownership. Now pre-selling.

**\$650,000**

\*While in residence

## SKI-IN, SKI-OUT LUXURY IN DEER VALLEY

### The Residences at The Tower

This on-mountain 4,303 SF, 5-bed, 5.5-bath luxury condominium is directly connected to Talisker Club – Empire Pass. Two pre-sale opportunities remain.

**\$8,495,000**



## NEW PROPERTY & HOME RELEASES

Custom Homesites from \$275K to \$2.9M | New Homes & Residences from \$650K to \$9M

Contact Us For Your Private Tour

435.333.3617 | [TaliskerClub.com](http://TaliskerClub.com) | Welcome Center Open Daily



**TALISKER CLUB**  
A PRIVATE WONDERLAND



The Talisker Club materials and the features, prices and planned amenities are based upon current development plans which are subject to change without notice. Any and all recreational and golf amenities and facilities will be privately owned and operated as a club with mandatory membership and mandatory membership fees payable. This does not constitute an offer to sell or solicitation of an offer to buy real estate in any jurisdiction where prohibited by law or in any jurisdiction where registration or other legal requirements have not been fulfilled. ©2020 The names and logos are licensed and registered trademarks of Storied Deer Valley, LLC.

© 2020 BHH Affiliates, LLC. An independently owned and operated franchisee of BHH Affiliates, LLC. Berkshire Hathaway HomeServices and the Berkshire Hathaway HomeServices symbol are registered service marks of Columbia Insurance Company, a Berkshire Hathaway affiliate. Equal Housing Opportunity.

HOME  
12

## CHATWIN HOMES

## 926 WEST 470 NORTH

Saint Prex, Midway

Chatwin Homes has been building and designing custom homes for over 20 years. There is no tangible object more impactful or important than the home. We take responsibility in creating energy efficient homes that are as functional as they are beautiful. Crafting the dream homes of our clients and ensuring they absolutely love the end result is our passion. We love what we do.

Perched on the lush country hillside and overlooking the quaint town of Midway rests this lavish mountain-modern Prairie style home built and designed by Chatwin Homes. The exterior mimics the natural terrain it resides on, composed of stone & cedar with unique paneling accents. A trio of oversized storefront windows greet you to a large iron front entry. The stunning first look awaits you just inside; with clean lines, organic textiles and attention to detail, you will experience an unequaled style that still remains warm and inviting. Oak hardwood floors blend into noteworthy wood-infused wall treatments. Lit by an abundance of natural light and carefully crafted light fixtures. Enter through the glass encased great room to a grand open-flame fireplace wall that simply demands your attention.

Boasting Thermador appliances, the kitchen with its cascading quartz waterfall

island and hidden hardware make for a beautiful and minimalistic scene. This home features three master en-suites, each crafted with care to maintain an upscale resort level of quality. From the polished rocks surrounding the freestanding tub, private deck access, to the heated tile floors and sophisticated plumbing fixtures, utmost care was taken to ensure the same level of quality across each space in the home. Ascend the glass and steel staircase to an outstanding office space. An impressive floor-to-ceiling glass wall directs you to the living space below.

Walk out to a spacious covered deck and embrace the panoramic views and remarkable landscape design.

The basement is host to a second full kitchen with an island-bar that overlooks another uniquely designed wall and state-of-the-art 100" linear fireplace. A duo of spare bedrooms, a master en-suite, a robust theater room with stadium seating and a rear exiting third car garage compose a versatile basement space.

This home was also designed by Chatwin Homes. The aesthetic focuses on organic textiles and simple yet alluring design.



TOTAL SQ. FT.

5,750

BEDROOMS

6

BATHROOMS

6

GARAGE BAYS

3.5

SCAN FOR DIRECTIONS



\$\$ = \$1M - \$2M

House is For Sale

CONTACT: Rick Chatwin

Chatwin Development

801.787.4697

chatwinhomes@gmail.com

## CHATWIN HOMES

801.787.4697

chatwinhomes@gmail.com

www.chatwinhomes.com

ARCHITECT Alpine Design

INTERIOR DESIGNER The Lifestyle Collective



RICK CHATWIN



DYLAN CHATWIN

## PCAHBA MEMBER SUBCONTRACTORS AND SUPPLIERS

Hearth & Home Distributors  
Honey Bucket  
LKL Associates

Mountain Land Design Inc.  
The Stone Collection



# laburnum designs

interior design + furniture



COME SEE US AT HOME #12 SAINT PREX!

1690 N. State Street Orem, UT 84057

P: 801.224.2459

[www.laburnumdesigns.com](http://www.laburnumdesigns.com)

# TIMBER CREEK CUSTOM HOMES

## 433 NORTH 850 WEST

Saint Prex, Midway

**T**imber Creek Custom Homes is proud to present this beautifully unique Scandinavian farmhouse situated perfectly above Midway City. Brilliantly designed to capitalize on the sweeping valley and mountain views, this home boasts an impressive porch and deck, private patio and genius basement walkout. The exterior brings gorgeous natural stone and cedar together with contemporary elements of metal siding and flat roof lines for a truly new farmhouse look.

Stepping through a glass entry, guests are greeted with the clean wood lines of oak and cedar married with warm tones in tile and stone, consistent with a modern Scandinavian inspiration. Natural light pours through tall elegant windows. Four, grand multi-point sliding doors deliver on the true Utah outdoor living experience. The flawless layout provides a view from virtually

every room in the house. Double-sided fireplaces tie wide-open common areas together for both main floor living above and stunning guest accommodations below. Entertaining space abounds with game tables, a sports court, wet bar, hot tub and two firepits. This Midway sanctuary is truly a perfect gathering place for family and friends.

As a local builder based in Heber, Timber Creek Custom Homes embraces each new build with 100% dedication and investment. We have carefully selected an exceptional team of craftsmen and vendors who share our love of quality, strength, functionality and, of course, beauty. We expect from our tradesmen only what we expect of ourselves, nothing less than our very best work every time.



TOTAL SQ. FT.

5,650

BEDROOMS

4

BATHROOMS

5

GARAGE BAYS

3

SCAN FOR DIRECTIONS



\$\$\$ = \$2M - \$4M

House is For Sale

CONTACT: Eldon Haacke

EVH Real Estate

801.558.8601

ehaacke@evhrealstate.com

5 Star Building Products, LLC

ACW Construction, Roofing, Sheet Metal

Arizona Tile

Bedrosian Tile and Stone

BMC - Building Materials

&amp; Construction Solutions

### TIMBER CREEK CUSTOM HOMES

801.368.1130

ryan@timbercreekcustom.com

www.timbercreekcustom.com

ARCHITECT Clayton Vance Architecture  
INTERIOR DESIGNER Alder & Tweed

RYAN PRATT

### PCAHBA MEMBER SUBCONTRACTORS AND SUPPLIERS

Concrete Shop Wes

Earth Elements

Ferguson Bath, Kitchen

&amp; Lighting Gallery

Honey Bucket

Jones Mechanical Inc

K.T. Hardwoods, Inc.

Mountain Land Design Inc.

P3 Windows and Doors

The Stone Collection

Timber Creek Custom Homes

Zanos Tile LLC



# NOW SELLING

  
CASCADES  
*at Soldier Hollow*



  
TIMBER CREEK  
CUSTOM HOMES



LUXURY HOMES



LOCAL AMENITIES



OUTDOOR PARADISE

LOCATED A FEW MINUTES OUTSIDE OF MIDWAY, THESE HOMESITES OFFER MAGNIFICENT VIEWS OF MOUNT TIMPANOGAS, DEER CREEK RESERVOIR, SOLDIER HOLLOW GOLF COURSE AND THE SURROUNDING MOUNTAIN RANGES. THE CASCADES AT SOLDIER HOLLOW IS NOW OFFERING PHASE II PARCELS STARTING AT \$250,000 FOR 0.4 TO 0.5 ACRE SITES.

OWNER/AGENT: ELDON HAACKE | EVH REAL ESTATE

o 801.278.4680 | c 801.558.8601

EHAACKE@EVHREALESTATE.COM | WWW.MIDWAYMOUNTAINVIEWHOMES.COM

TIMBER CREEK CUSTOM HOMES 801-368-1130

HOME  
14

CHATWIN HOMES

## 45 WEST FARM SPRINGS LANE

Farm Springs, Midway

Chatwin Homes has had the opportunity to participate in 13 Showcase of Homes throughout the state of Utah. Two time recipient of the acclaimed 'Best in Show' award, we are thankful for our past success and look forward to the future. Our showcase home this year is one of our favorites to date.

The first thing one notices about our Farm Springs Lane home is the timeless, aged beauty of an Old World European Chateau that it replicates. As you approach the entry courtyard, your attention is drawn downward to the exquisite paver and foliage design. Greeted by a pair of gas-lit lanterns, a solid oak door leads you into an inviting and open floor plan. A striking two-story staircase wall encased entirely with windows presents the back of Timpanogos Mountain along with a backyard landscape anyone would be excited to come home to. A soccer field encompassed with personal jogging track, swimming pool and carefully landscaped amenities bring life to the outdoor space.

The great room is host to floor-to-ceiling windows, a double sided custom

precast fireplace and beautiful decorative beam design adorning the ceilings.

The formal dining area introduces you to a state-of-the-art kitchen featuring an expertly crafted precast oven hood, 11-foot cabinets that extend to the ceiling and a double butler's pantry. Other notable features include an oversized master closet with built-in washer and dryer, a sunroom breezeway surrounded in windows, large exercise space, five car garage and a four bedroom upstairs each complete with en-suite bathrooms.

For the past 20 years Chatwin Homes has taken pride in its unique approach to designing, creating, constructing, decorating and landscaping dream homes. All of this with our goal to bring the most value to our product with the lowest overhead produces an unbeatable building experience. A high-quality, energy efficient home with no detail overlooked is what a dream home deserves and Chatwin Homes is happy to be a part of it. We take stewardship over our client's satisfaction at all times during the process. You dream it, Chatwin Homes will bring it to life.



TOTAL SQ. FT.

7,950

BEDROOMS

6

BATHROOMS

8

GARAGE BAYS

5

SCAN FOR DIRECTIONS



\$\$\$ = \$2M - \$4M

House is **NOT** For Sale

## CHATWIN HOMES

801.787.4697

chatwinhomes@gmail.com

www.chatwinhomes.com

INTERIOR DESIGNER Jessica Rinqest  
and Chatwin Homes

RICK CHATWIN



DYLAN CHATWIN

## PCAHBA MEMBER SUBCONTRACTORS AND SUPPLIERS

Hearth & Home Distributors  
Honey Bucket  
LKL AssociatesMountain Land Design Inc.  
The Stone Collection  
Velux



WOLF

SUBZERO

COVE



Provo | Sun Valley | [Salt Lake City](#) | Jackson Hole | Boise

[WWW.MOUNTAINLANDDESIGN.COM](http://WWW.MOUNTAINLANDDESIGN.COM)

At Regal Homes our team builds more than houses, we build communities and relationships that last. Trusted since 1994, we've been building communities in highly desirable locations where luxury is attainable and where neighbors become lifelong friends. When you choose Regal Homes, you choose our commitment to superior quality, customer service and ultimately the best overall value.

As a true local homebuilder along the Wasatch Front and Wasatch Back, our goal over the past 26 years has been to provide a new home-buying experience that consistently exceeds the expectations of our homeowners. Regal Homes prides itself in being a "hands on" local homebuilder, offering a distinctive personal touch, unlike so many of today's large corporation builders, that focus only on volume and the bottom line from afar.

Regal Homes offers a combination of quality materials and superior design. Every personalized selection is seamlessly added to create your perfect dream home. Every home we build involves multiple "Regal Team" checkpoints during the course of construction, allowing us to deliver a high quality home with unprecedented value that is uniquely yours. Come experience "Royal Treatment" for yourself.



TOTAL SQ. FT.

3,302

BEDROOMS

4

BATHROOMS

2 full 1 half

GARAGE BAYS

3

SCAN FOR DIRECTIONS



\$ = less than \$1M

House is **NOT** For Sale

## REGAL HOMES, LC

801.201.6383

rick.regalhomes@gmail.com

www.regalut.com

ARCHITECT Regal Homes, LC

INTERIOR DESIGNER Regal Homes, LC



RICK LLOYD, RICHARD COOK, DADE ROSE

## PCAHBA MEMBER SUBCONTRACTORS AND SUPPLIERS

BMC-Building Materials &amp; Construction

First American Title Co.

Hearth &amp; Home Distributors

LKL Associates

Mountain Land Design Inc.





Portraits *that* Define *your* Lifestyle

*Impact*  
Photography

75 South Main • Heber City, Utah 435-654-2726 [IMPACTdesignerPORTRAITS.com](http://IMPACTdesignerPORTRAITS.com)

HOME  
16

H2 HOMES

2888 EAST BROWN DUCK MOUNTAIN CIRCLE

Red Ledges, Heber City

**A**t H2 Homes we assist our clients with every aspect of home building, from the conceptual design to the finishing touches. We specialize in building custom homes tailored to the needs and budgets of each individual, focusing on relationships of trust and transparency. Our process has been tested and proven over years of experience and hundreds of successful builds, and together we can build something that you will be proud to call home.



TOTAL SQ. FT.

6,350

BEDROOMS

4

BATHROOMS

4 full 2 half

GARAGE BAYS

3

SCAN FOR DIRECTIONS



\$\$\$ = \$2M - \$4M

House is For Sale

CONTACT: Chris Maddox

BHHS Properties Red Ledges

801.657.2798

chris.maddox@redledges.com

H2 HOMES

801.424.6637

joel@h2homes.com / layne@h2homes.com

www.h2homes.com

ARCHITECT Inouye Design

INTERIOR DESIGNER The Olsen Home



JOEL HARRIS



LAYNE HARRIS

## PCAHBA MEMBER SUBCONTRACTORS AND SUPPLIERS

BTM Construction LLC  
Duerden's Appliance  
Epic Windows & Doors  
Hearth & Home Distributors

Honey Bucket  
Mountain Land Design Inc.  
PepperTree Kitchen & Bath  
Smith Hardware & Glass







HOME  
17

## PUREHAVEN HOMES

## 2394 EAST LA SAL PEAK DRIVE

Red Ledges, Heber City

**P**erched atop the Heber Valley, this mountain refuge is a wonderful example of mountain living and modern design. This home is full of breath-taking panoramic views of the Heber Valley and the Wasatch Mountain Range.

PureHaven Homes with the help of Todd Mather Architecture, bring you this wonderfully designed and constructed home with many Lake Tahoe influences. By combining privacy, expansive views, and the creature comforts of home, we hope you will enjoy your time spent in this exquisite residence.

The exterior of the home itself features a distinctive Wyoming snow fence siding with naturally patinaed steel. A welcoming entry-level bridge accompanied by a cascading water feature brings you into the home creating a sense of peace. Once inside, the views of the Utah landscape become overwhelming and provide never ending panoramas of the Rocky Mountains.

Inside, the open floor plan creates an expansive space and keeps the outdoor

views unobstructed, while a large covered outdoor deck gives you the experience of being on top of it all. The kitchen, open to the surrounding dining room and great room, boasts a beautiful working island. The master retreat truly floats above the valley, revealing expansive yet private views of the Wasatch Mountains and Guardsman's Pass. Other interesting features of the home include a secondary main floor master suite and a hidden golf simulator room in the lower level.

PureHaven Homes has built luxury custom homes and residences in the Park City area since 2006.

At PureHaven, we believe in not only providing a well built home, we believe in providing an exceptional experience. Our goal is to build luxury custom residences that stand the test of time, are built for a family's individual lifestyle, performs well under all circumstances, and will serve as a gathering space for generations to come.



TOTAL SQ. FT.

7,072

BEDROOMS

5

BATHROOMS

6

GARAGE BAYS

3

SCAN FOR DIRECTIONS



\$\$\$ = \$2M - \$4M

House is For Sale

CONTACT: Chris Maddox

Red Ledges Realty

801.657.2798

chris.maddox@redledges.com

## PUREHAVEN HOMES

801.870.6559

shane@purehavenhomes.com/

andy@purehavenhomes.com

www.purehavenhomes.com

ARCHITECT Todd Mather Architects

INTERIOR DESIGNER Next Jen Design



SHANE HARR



ANDY MAPP

## PCAHBA MEMBER SUBCONTRACTORS AND SUPPLIERS

Mountain Land Design  
Sierra Pacific WindowsSunroc Building Materials  
Wasatch Heat Cable





PUREHAVEN HOMES

THE LIFESTYLE YOU DESERVE

801.870.6559  
purehavenhomes.com

HOME  
18

## RED LEDGES HOMEBUILDING

## 472 NORTH RED LEDGES VILLAGE WAY

Red Ledges, Heber City

**R**ed Ledges Homebuilding (RLHB) was organized to deliver an exceptional homebuilding experience for property owners at this premier four-season private mountain community. Under the leadership of Rex McGuire, RLHB operates exclusively within the Red Ledges community, providing complete project management under one roof with a select team of architects, designers, project managers, and trade partner alliances to streamline the experience of creating a custom home.

RLHB builds a diverse selection of upscale modern and traditional homes that span the spectrum from easy-living lock-and-leave homes, to bespoke estate homes. Buyers may move right into a furnished modern residence, choose a pre-designed home that can be customized to suit their tastes, or select a homesite to create a custom dream home, completely tailored to individual preferences.

Red Ledges Design Studio is a key element of this streamlined design-build process, conveniently located on-site at Red Ledges. Under the direction of acclaimed design professionals, Alder & Tweed, and working with Earth Elements Design Resource Center, the Design Studio offers a curated selection of the finest fixtures, finishes, cabinetry, hardware, flooring, and appliance options. This eliminates the chore of researching, sourcing, and visiting countless vendors for cabinets, flooring, tile, counters, appliances, hardware, plumbing, furniture, and more.

From site planning, architectural design, and permit management through construction, landscaping, and interior design, Red Ledges Homebuilding capitalizes on decades of experience to make the process of creating your custom home easy and straightforward, with focused collaboration and communication.



TOTAL SQ. FT.

1,784

BEDROOMS

2

BATHROOMS

3

GARAGE BAYS

1.5

SCAN FOR DIRECTIONS



\$ = less than \$1M

House is For Sale

CONTACT: Joe W. Carter

Red Ledges Realty

706.347.1729

joe.carter@redledges.com

## RED LEDGES HOMEBUILDING

435.657.4044

construction@redledges.com

www.redledges.com

ARCHITECT ARCFLO



REX MCGUIRE

## PCAHBA MEMBER SUBCONTRACTORS AND SUPPLIERS

All West Communications  
Audio Video Systems  
Dominion Energy  
Earth Elements  
Hansen-All Seasons Insulation

Honey Bucket  
Mele Tile & Natural  
Stone Co.  
P3 Windows & Doors  
Scott Schofield Construction Inc.





# UNDER ONE ROOF

## You're going to love building with us

Mother Nature created the stunning views and unique red rock formations at Red Ledges. Red Ledges Homebuilding provides the perfect way to build the home you've been dreaming of in the perfect place. We provide complete project management services from initial site planning to final landscaping, so you can spend more time enjoying the Red Ledges lifestyle.

At Red Ledges, neighbors become friends and activities become passions, and the pace of life is as vibrant or relaxed as you'd like. Learn more about the Red Ledges lifestyle and homebuilding opportunities at [RedLedges.com](http://RedLedges.com) or call 877.733.5334.



Homesites from \$175K to \$1M

**RED LEDGES™**  
—HOMEBUILDING—

Homes from \$775K to \$6M





# Simple Solutions For Every Room In Your Home



WALK-IN CLOSET



OFFICE



LAUNDRY



WALL BEDS

**FREE Virtual or In-Home Design Consultations Available**

Call (801) 972-5757 for a free in-home design consultation and estimate or visit us online at [closetfactory.com](https://www.closetfactory.com)

**closetfactory**  
the art of organization



# SERENITY

801-930-9499  
WALKERHOMEDESIGN.COM

WALKER  
HOME DESIGN



---

YOUR WORLD CLASS HOUSE PLAN





## Park City's Proven Roofing Company For 20 Years



**Get A Free Roofing Estimate Today**

**435.615.8669**

All Types of Metal Roofing • Asphalt Shingles • Exterior & Interior Wall Panels  
Gutter & Heat Cable • Architectural Sheet Metal • Snow Retention Systems

[www.ontoproofing.com](http://www.ontoproofing.com)





Tanner Glass & Hardware provides and installs all types of glass and decorative hardware. Working with homeowners, contractors and designers helps us keep up with the latest building trends to create your next dream project. Our experienced staff strives to give the best service to all of our customers and is here to help you at one of our two locations.

**For a personalized experience, stop by or call to schedule an appointment at our Park City or Midvale showrooms.**

**SHOWERS • MIRRORS • DECORATIVE HARDWARE  
CUSTOM FRAMING • STORE FRONT • GLASS RAIL • & MORE**

**PARK CITY, UTAH**

4490 Forestdale Dr.  
M-F, 9am - 5pm  
435.565.6115

**MIDVALE, UTAH**

7139 South 700 West  
M-F, 8am - 5pm  
801.563.3343

[www.tannerglass.com](http://www.tannerglass.com)



# YOU KNOW THE VALUE OF A PEACEFUL HOME.

Enjoy more access to your kitchen with custom pull-out shelves for your **existing cabinets**.



## SPECIAL OFFER

**0% Interest for 12 Months**

\*\*\*On Approved Credit



ShelfGenie®  
EVERYTHING WITHIN REACH®



**50%  
OFF  
INSTALL!\***

\*Limit one offer per household.  
Must purchase 5+ Classic/Designer  
Shelves. **EXP 12/31/20.**



Schedule your complimentary design consultation!

**(801) 609-3356 | shelfgenie.com**





Where Mother Earth's masterpiece and skilled craftsmen combine to create an exquisite countertop, that will reflect and define your individual style.

Visit us at  
[creativegranite.com](http://creativegranite.com)

**801-886-0204**



# Soft Water. *Elevated.*

Tiny Footprint | Big Performance

Soften your home's water with NuvoH2O's revolutionary, patented system that uses the natural power of citrus, NOT salt.

- Prevents scale build-up
- Removes existing scale
- Extends life of water heaters, pipes, fixtures, appliances
- Increases efficiency
- Independently tested & verified
- Compact design
- Eco-Friendly
- ZERO energy cost

*"Effective, discrete,  
and eloquent.  
Salt-free soft water  
I can count on!"*



Learn more at [NuvoH2O.com/ShowcaseofHomes](http://NuvoH2O.com/ShowcaseofHomes)





# MAKE THE MOST OF YOUR HOME



**LYNX**  
PROFESSIONAL GRILLS

36" Professional Built-in Grill

YOUR LOCAL SHOWROOMS: PARK CITY | LAS VEGAS

Shop online or schedule a personalized appointment from the comfort of your home today at [fergusonshowrooms.com](https://fergusonshowrooms.com).

**FERGUSON**  
Bath, Kitchen & Lighting Gallery

©2020 Ferguson Enterprises LLC 0720 2038558

# See Your Home in a Whole New Light



**One Time Installation!**  
Never Worry About Hanging Lights Again!

Easy Controls from your SMART PHONE



Professionally Installed  
PERMANENT Programmable Lights

- **MILLIONS OF COLORS** with **THOUSANDS** of Combinations
- **FREE REPAIR** for 5 Years
- **WATERPROOF**
- Most Jobs Installed in 1 DAY
- **LIFETIME WARRANTY** on all Parts



**Call Us Today to Schedule and Beat the Holiday Rush!**

## 435-200-3472



IMAGINE • CREATE • INSPIRE

**Artisan hand blown glass  
made in beautiful Park City, UT.**

**Come see our studio or contact us to start your next custom lighting project.**

**Info@RedFlowerStudios.com | www.RedFlowerStudios.com**



# THE CABINET GALLERY

11538 S. STATE STREET, STE 400, DRAPER, UT 84020  
THECABINETGALLERYUTAH.COM  
801.619.9888



Full service cabinet manufacturing and design center - from concept to completion and everything in between.

We are proud to be part of the growing Signature Kitchen Suite family, we have a large clientele that is tech-savvy and equally passionate about cooking – and this industry-leading new appliance line is a perfect fit for those looking to re-design their kitchens with the latest in luxury kitchen appliances.

Come visit The Cabinet Gallery, where we turn ordinary spaces into extraordinary places!



CUSTOM CABINETS - 3D DESIGN SERVICES - LUXURY APPLIANCE & HARDWARE DEALER  
AS SEEN IN 2020 UV PARADE HOMES - THE STONE MANOR & THE MATTERHORN  
2020 SALT LAKE PARADE OF HOMES - THE PENROSE





Creating unique and stylish  
outdoor living spaces



Contact Daren at  
**801-888-8198**  
[www.timberridgeutah.com](http://www.timberridgeutah.com)





# PERSONALIZED STYLE FOR EVERY HOME



"Your home should be a collection of things that bring you joy and reflect your personality and unique sense of style."

Jennifer Mangum-Whaley  
Owner, Designer



DESIGN STUDIO + FURNITURE STORE

206 W MAIN STREET, MIDWAY | 435.315.3083 | SPRUCEYOURHOME.COM



**STAKER PARSON**  
MATERIALS & CONSTRUCTION  
A CRH COMPANY



**JACK B. PARSON**  
READY MIX CONCRETE  
A CRH COMPANY



**STAKER PARSON**  
LANDSCAPE CENTERS  
A CRH COMPANY





Asphalt



Cobble Products



Ready Mixed Concrete



Ultimate Grass



Decorative Rock



Bark & Mulch



Belgard® Pavers



Landscape Chat



Topsoil

## Get Inspired!

We are committed to be your *Preferred Source* for quality:

- Sand, Rock & Landscape Products
- Ready Mixed Concrete
- Asphalt
- Paving
- Construction Services

We offer the broadest range of products across the widest geography in Utah. We look forward to serving you.

Call or text for more information:  
Ready Mix Concrete - 801-262-1400  
Landscape Centers- 801-409-9500

To learn more, please visit:  
[www.stakerparson.com](http://www.stakerparson.com)

Bring in this ad for 10% off your purchase of topsoil, mulch, bark, or decorative rock.

\*Discount doesn't apply to delivery

- Salt Lake Parade of Homes



 **BUDGET®  
BLINDS**  
Style and service for every budget.™

**Shutters • Roller Shades • Woven Woods • Drapes**  
**Your Automation Experts. "Siri/Alexa, Open Shades".. DONE!**

**CALL FOR YOUR FREE CONSULTATION:  
435-657-5067 | BUDGETBLINDS.COM**

**Effortless convenience  
at your fingertips.**

Our Smart Home Collection is easy to use, easy to afford, and since we do it all for you, everything connects just beautifully.

**WE DO IT ALL FOR YOU: BLINDS • SHADES • SHUTTERS • DRAPES • HOME AUTOMATION**



**K&R**

— INTERIORS —

BEDDING • DRAPERY • DESIGN FABRIC

**20% OFF ALL IN-STOCK**

**FABRIC FOR CUSTOM ORDERS**

736 WEST 300 SOUTH • SALT LAKE CITY

801-364-2128 • KRBEDS.COM





# CRAIG KITTERMAN & ASSOCIATES ARCHITECTS

*Personally Distinctive Home Design*



801.270.8606 • [craigkittermanarchitects.com](http://craigkittermanarchitects.com)



BARCLAY BUTERA  
INTERIORS

LUXURY MODELS  
RESIDENTIAL  
DEVELOPMENTS

PLEASE CONTACT US FOR  
COMPLETE DESIGN SERVICES  
255 HEBER AVENUE  
PARK CITY  
435.649.5540

[WWW.BARCLAYBUTERA.COM](http://WWW.BARCLAYBUTERA.COM)

# REINVENT YOUR MARKETING PLAN



**UMG**

801-204-6300 | [umgagency.com](http://umgagency.com)

 **DeseretNews.**

**The Salt Lake Tribune**

**Hometown  
Values**

**Utah  
Business**

Social Media  
Email Marketing  
Digital Display  
Website Development  
Search Engine Optimization

Search Engine Marketing  
Video Production  
Motion Graphics  
Content Creation  
Custom Printing

Brand Strategy  
Targeted Research  
Pay-Per-Click  
Lead Generation





every  
donation

helps build a decent  
and affordable home

SHOP • DONATE • VOLUNTEER



HABITAT FOR HUMANITY  
OF SUMMIT AND WASATCH COUNTIES

6280 Silver Creek Drive • Park City, Utah 84098  
435.487.9015 • [www.habitat-utah.org](http://www.habitat-utah.org)  
[www.facebook.com/HabitatSWC](https://www.facebook.com/HabitatSWC)  
[www.facebook.com/ParkCityReStore](https://www.facebook.com/ParkCityReStore)



**Custom Homes | Remodel**

**Family owned and operated in  
Park City, Utah for nearly 30 years.**



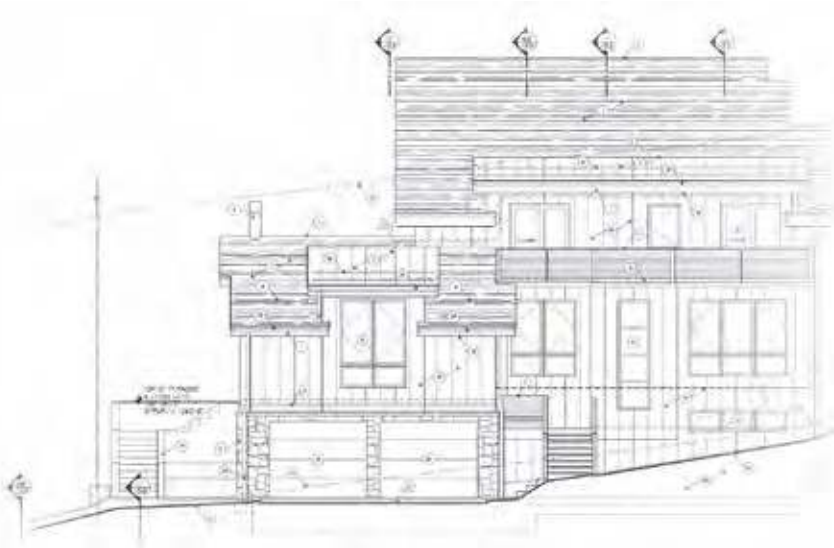
**DENNIS LOOMIS**  
General Contractor  
Phone: (435) 655-5717

**LISA LOOMIS**  
General Contractor  
Phone: (435) 647-7924

**PARKER LOOMIS**  
Project Manager  
Phone: (435) 655-5387

Email: [loomisconstruction96@gmail.com](mailto:loomisconstruction96@gmail.com) | [www.loomisconstructionparkcity.com](http://www.loomisconstructionparkcity.com)





Loomis Construction is excited to present “King Road,” a modern home in the middle of Old Town Park City. Just minutes from Main Street, Park City Mountain & Deer Valley Ski Resort, this home is ideally situated to fit any lifestyle. The architect Jonathan DeGray designed King Road with a flashy, yet elegant exterior while maximizing space on the interior.

***Home is for sale — Price upon request***

Visit [loomisconstructionparkcity.com](http://loomisconstructionparkcity.com) for a virtual tour.

### **Julie Ponder**

ENGEL & VÖLKERS USA  
Engel & Völkers U.S. Holdings, Inc.  
890 Main Street, Suite 5101  
Park City, UT 84060

Phone: +1 435-565-1811  
Mobile: +1 435-565-1811

Website: <http://julieponder.evusa.com>  
Email: [Julie.Ponder@evusa.com](mailto:Julie.Ponder@evusa.com)

### **Loomis Construction**

P.O. Box 980515  
Park City, UT 84098

**General Contractor:** Dennis Loomis (435) 655-5717  
Lisa Loomis (435) 647-7924  
**Project Manager:** Parker Loomis (435) 655-5387

Business Inquires: [loomisconstruction96@gmail.com](mailto:loomisconstruction96@gmail.com)  
[www.loomisconstructionparkcity.com](http://www.loomisconstructionparkcity.com)

Jonathan DeGray - Architect  
Phone: (435) 649-7263  
Email: [degrayarch@qwestoffice.net](mailto:degrayarch@qwestoffice.net)

**Special thanks to Mountainland Design | Sub-Zero, Wolf | Kohler | Hamilton Park Interiors**

**Park City Home Builder's Association members who contributed:** ACW Construction Roofing and Sheet Metal | BMC-Building Materials & Construction Solutions | Closet Factory | Custom Finish Supply Company, Inc. | Epic Windows & Doors | Finch Welding & Fabrication Inc. | Fireout LLC | Hansen-All Season Insulation | Hamilton Park Interiors | Hearth and Home Distributors | Honey Bucket | Impact Photography | JWW Excavating | Kip Slauch & Associates | Midway Floor Covering | Mountain Land Design Inc. | Silver Mountain Plumbing | Tanner Glass & Hardware | The Stone Collection | The Swag Lounge at Whitney Advertising | US Bank





Pictured: 9 x 12 Shirvan-Platinum/Ivory, Handknotted in Rajasthan, India  
One of many designs made exclusively for Foothill Oriental Rugs

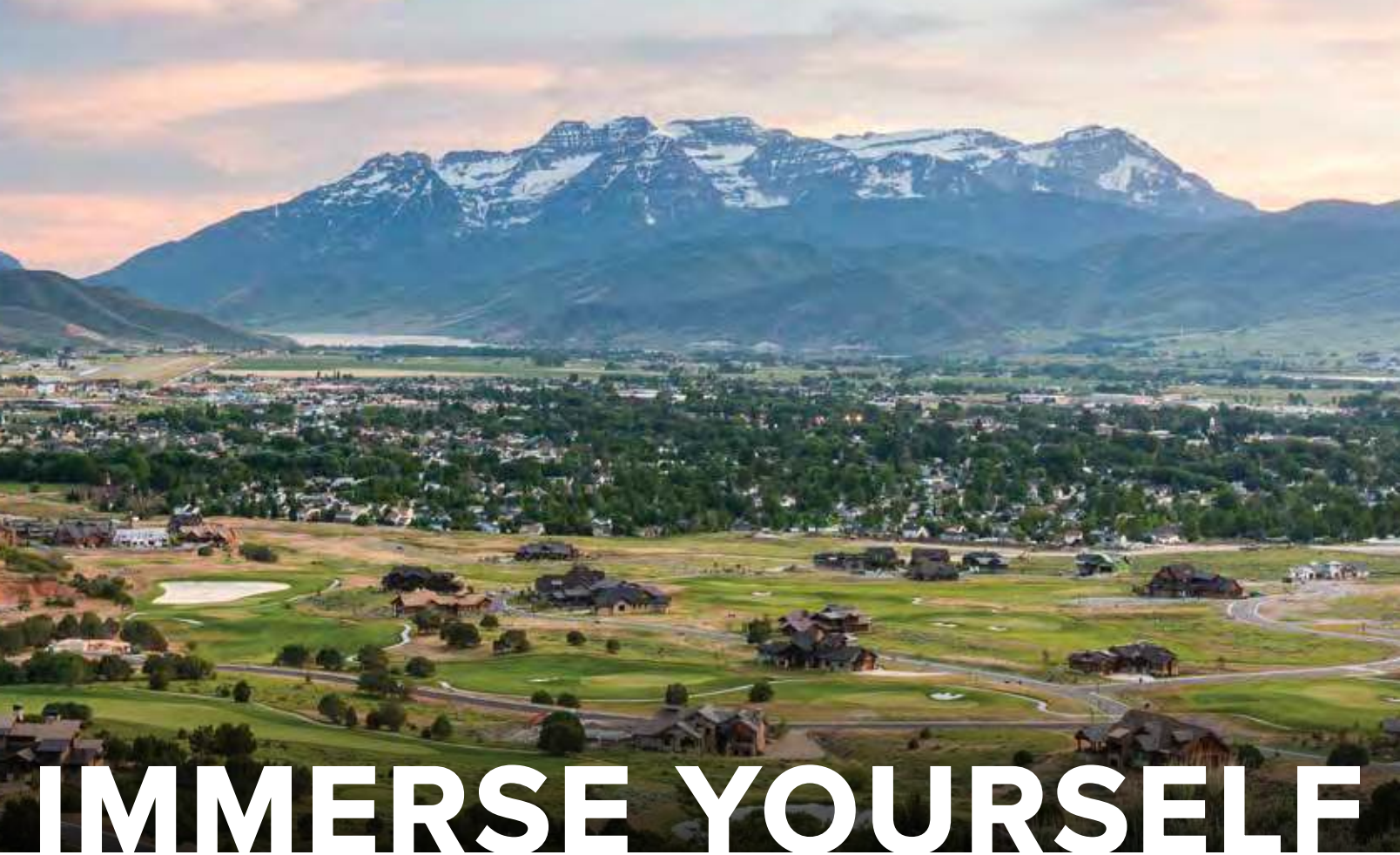
A LOCALLY OWNED, WORLD-CLASS  
SOURCE FOR HANDMADE RUGS

1464 Foothill Drive, Salt Lake City, UT  
801-582-3500 [foothillorientalrugs.com](http://foothillorientalrugs.com)

 **FOOTHILL**  
ORIENTAL RUGS

Direct importers since 1985





# IMMERSE YOURSELF

## in the relaxed luxury of Red Ledges

There are countless ways to engage with the things you love to do at Red Ledges, a four-season private community located just outside Park City, Utah. Play a round of golf, take tennis lessons, enjoy an elegant dinner at Juniper Grill, ski Deer Valley Resort® with privileged access from two slope-side lounges, discover new flavors in a cooking class, breathe the fresh air on a hike or mountain bike excursion, find your inner cowboy on a guided trail ride, or simply relax by the pool or the firepit.

At Red Ledges, neighbors become friends and activities become passions, and the pace of life is as vibrant or relaxed as you'd like. Learn more about the Red Ledges lifestyle and homebuilding opportunities at [RedLedges.com](http://RedLedges.com) or call 877.733.5334.



Homesites from \$175K to \$1M

**RED LEDGES™**  
— U T A H —

Homes from \$775K to \$6M



**BERKSHIRE  
HATHAWAY**  
HomeServices

Utah  
Properties

Please obtain the Property Report required by federal law and read it before signing anything. No federal agency has judged the merits or value, if any, of this property. All descriptions, depictions, and renderings are provided solely for illustrative purpose and are subject to change. 2020 Red Ledges Land Development, Inc. A member of the franchise system of BHH Affiliates, LLC. Equal Housing Opportunity.





4730 South 500 West • Murray, Utah 84123

801-266-3222 • [www.huettermill.com](http://www.huettermill.com)

# Huetter Molding, Stair Parts, and Installation

FOR REMODEL AND NEW  
HOME CONSTRUCTION

