

AUGUST 28-30 AND SEPTEMBER 4-7

Both Fridays: 2 p.m. to 8 p.m. Both Saturdays, Sundays and Labor Day Monday: 10 a.m. to 6 p.m.



2015 PARK CITY AREA SHOWCASE *of* HOMES



FREE
Map App



App Store
Park City Showcase

For Ticket Info See Page 12 • See Pull Out Map Inside
www.PCShowcaseOfHomes.com

ZIONS BANK
WE HAVEN'T FORGOTTEN WHO KEEPS US IN BUSINESS®



Hamilton Park
INTERIORS

MOUNTAINLAND DESIGN
APPLIANCES | PLUMBING | HARDWARE

VR
VICTORY RANCH
VIP sponsor

BMC DESIGN
Ticket booth sponsor

SUNROC REWARDS

Approved by spouses everywhere.



REWARDS.SUNROC.COM

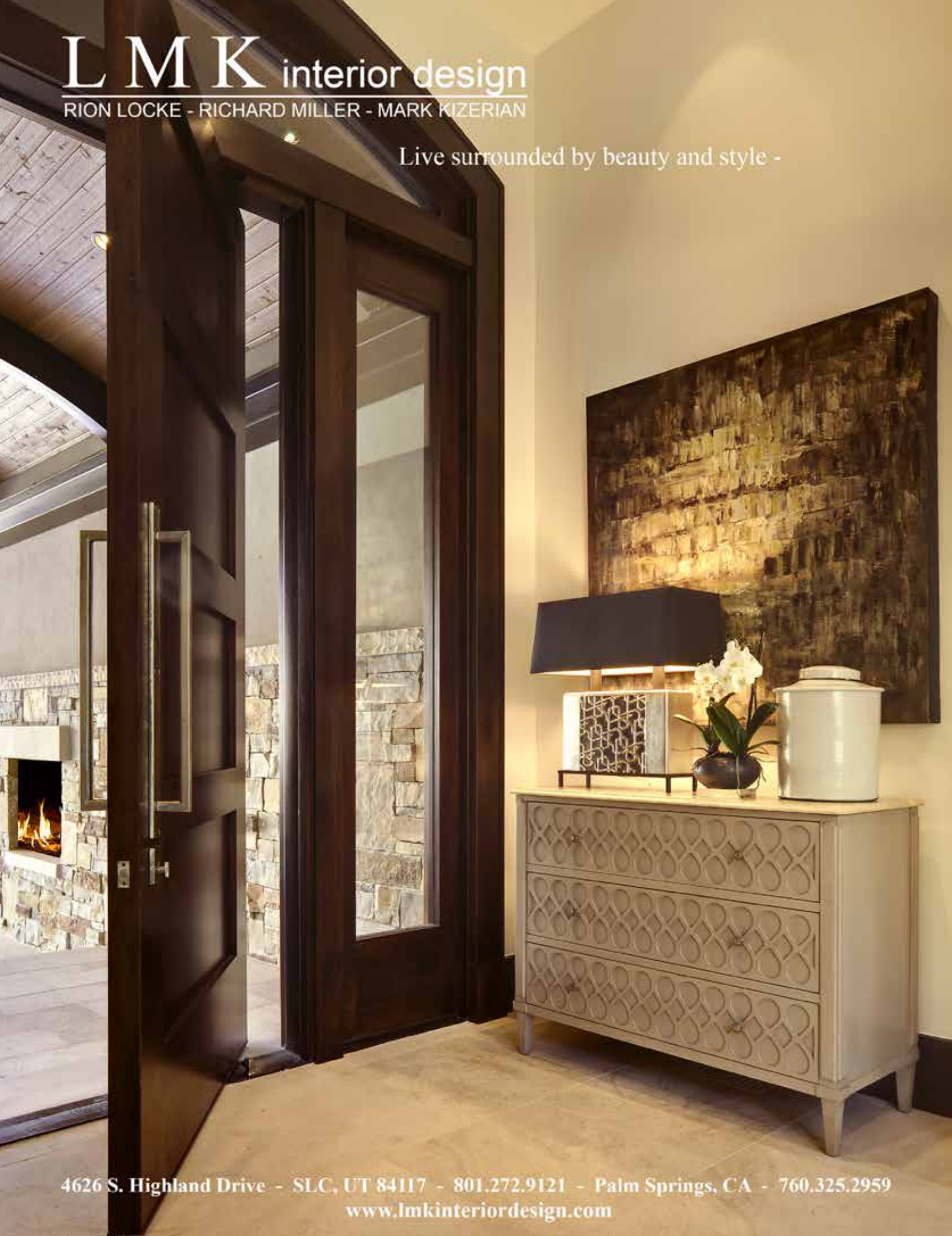
Builders, let Sunroc reward you for a job well done. Sunroc Rewards is the first program of its kind, where contractors earn points every time they make a qualified purchase with a participating Clyde Company. Use your points for travel vouchers, gift cards of your choice, or join us for our all-inclusive signature trip. Learn more at REWARDS.SUNROC.COM.

DOORS | WINDOWS | LUMBER & TRUSS | INSULATION | GARAGE DOORS

LMK interior design

RION LOCKE - RICHARD MILLER - MARK KIZERIAN

Live surrounded by beauty and style -



4626 S. Highland Drive - SLC, UT 84117 - 801.272.9121 - Palm Springs, CA - 760.325.2959

www.lmkinteriordesign.com



SIERRA PACIFIC

WINDOWS THAT
NEVER COMPROMISE



2015 Park City Showcase of Homes

Sierra Pacific Windows is proud to be the window and door supplier of choice for the 2015 Park City Showcase of Homes.

Big Canyon Homes
Utah Home Builders
Cameo Homes
Russell and Company
Purehaven Homes
Hawkes Phelps Homes
RKC Builders

Showcase Home # 1
Showcase Home # 5
Showcase Home # 7
Showcase Home # 8
Showcase Home # 13
Showcase Home # 14
Showcase Home # 18



801-973-7170 • www.sierrapacificwindows.com



elume

DISTINCTIVE LIGHTING

HAMMERTONSTUDIO™

Handcrafted Waterfall Chandelier In Ivory Wisp Glass



26th Annual
ARTS
AWARDS
WINNER

Park City, Utah — Showroom
435-647-2997
By Appointment
elumepc.com

PROUD MEMBER
OF THE



**PARK CITY AREA
HOME BUILDERS
ASSOCIATION**

Please visit us in houses 2, 4 & 6



Manufacturer of Fine
Furniture and Custom Cabinetry

Le Ce
Designs



PROUD MEMBER
OF THE



Le Ce
Designs

500 South 3020 West Suite G
Salt Lake City, UT 84104
(818) 209-8573
lecedesigns@yahoo.com
www.LeCeDesigns.com

SUNDAY AFTERNOON? FEEL LIKE THE LEAGUE COMMISSIONER.



PROUD MEMBER
OF THE

PARK CITY AREA
HOME BUILDERS
ASSOCIATION

Come see us in houses 3, 14, 16 & 18



Lock the man-cave
Fire up the screens
Tune in your favorite teams
Queue the kick off


YOUR DIGITAL CONCIERGE

CATCH THE ACTION WITH A SINGLE TOUCH OF A BUTTON :: FIND OUT HOW AT: WWW.VIAHOME.COM

HOME THEATER :: AUDIO & VIDEO :: HOME AUTOMATION :: SECURITY & SURVEILLANCE :: IT & TELECOMMUNICATIONS

6415 N BUSINESS PARK LOOP RD, SUITE K :: PARK CITY, UT 84098 :: +1.435.615.8138

Custom Crafted Luxury



OLD MILL BUILDERS

Old Mill Builders is committed to superior quality with the highest standards in the industry. Our hands on management is maintained by taking personal interest in each phase of your project. Our contractors and suppliers are the best in their field and share our vision to exceed your expectations.

DISCOVER THE DIFFERENCE OF A CUSTOM LUXURY HOME BY OLD MILL BUILDERS.

OldMillBuildersUtah.com

801.633.0730 or alanomb@gmail.com

**PROUD MEMBER
OF THE**



UTAH'S PREFERRED SOURCE

— FOR OVER 60 YEARS —



DECORATE ROCK



COBBLE



COLORLED CONCRETE



MULCH & BARK

Staker Parson Companies offers everything your home needs from footings to finishing touches. Pour a solid foundation with our easily customizable ready-mixed concrete. Use Insulating Concrete Forms as a sustainable solution to build a greener home. Top it off by constructing a water efficient and low maintenance landscape, choosing from over 60 options of decorative gravel or mulch. And if you need asphalt paving or construction services, we do that too. From the inside out, we've got you covered. Stop by today to experience our wide selection of products and services.

888.90.ROCKS | STAKERPARSON.COM



STAKER | PARSON
COMPANIES



JACK B. PARSON
COMPANIES



REYNOLDS EXCAVATION
DEMOLITION & UTILITIES

TABLE OF CONTENTS



| | |
|--|----|
| Guide to the Homes..... | 10 |
| Ticket Info..... | 12 |
| Showcase of Homes Sponsors..... | 14 |
| Welcome to the 2015 Showcase of Homes..... | 18 |
| 2015 PCAHBA Board of Directors/Officers..... | 20 |
| Frequently Asked Questions..... | 22 |
| Showcase of Homes App..... | 24 |
| There's No Place Like an Automated Home..... | 26 |
| Finding the Fireplace to Match Your Home..... | 28 |
| Luxury Meets Adventure in Utah's Great Outdoors..... | 30 |
| Interior Design Trends and Tips..... | 32 |
| Showcase of Homes..... | 34 |
| 2015 Subcontractors & Suppliers..... | 70 |

Cover photograph provided by
Kerry Puckett Photography
www.kerrypuckett.com

Home Renderings by
Scott Roberts



2015 PARK CITY AREA SHOWCASE of HOMES

August 28-30

September 4-7

OPEN FRIDAYS: 2 p.m. to 8 p.m.
OPEN SATURDAYS, SUNDAYS AND
MONDAY (LABOR DAY): 10 a.m. to 6 p.m.
(see pullout map)

NOTE: Park City Area Home Builders Association takes no responsibility for any Showcase of Homes participants that are not open for public viewing during Showcase of Homes dates.

All square footages listed are approximate.



**PARK CITY AREA
HOME BUILDERS
ASSOCIATION**

Park City Area Home Builders Association

P.O. Box 980850

Park City, UT 84098

3100 Pinebrook Road, #1075

PHONE 435-645-9363

info@pcahba.com • www.pcahba.com

Published in partnership with:

Utah Media Group

4770 S. 5600 West,
West Valley City, UT 84118
office: 801-204-6300
www.utahmediagroup.com

PRESIDENT & CEO

Brent Low

PROJECT TEAM

Jed Call, VP of Marketing
Megan Donio, Project Manager
Brian Hugo, Design Manager
Jeni Fitzgibbon, Project Coordinator

ADVERTISING

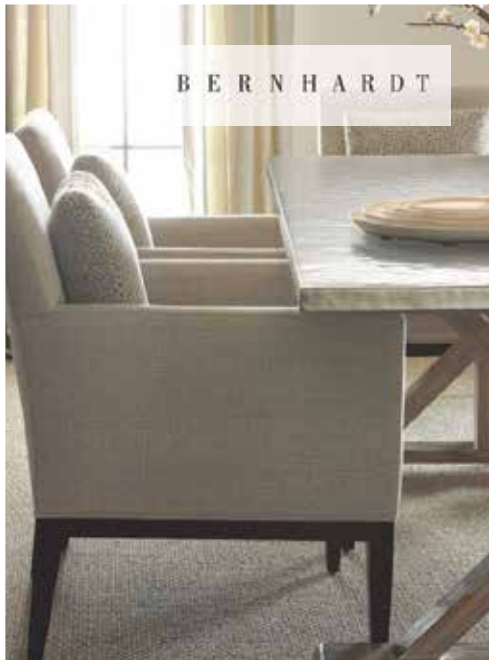
Sally Steed, VP Advertising
Trent Eyre, VP Advertising

ACCOUNT MANAGERS

Kathleen Beckmann, Suzanne Benitez,
Wendy Halliday, Betsy Shotwell Smith

PHOTOGRAPHER

Kerry Puckett



BERNHARDT



DREXEL HERITAGE
Welcome Home



NORWALK
FURNITURE



LEXINGTON
HOME BRANDS

Welcome Home!

OSMOND  DESIGNS

151 E. STATE STREET
LEHI • (801) 766-6448

1660 NO. STATE STREET
OREM • (801) 225-2555

OSMONDDDESIGNSFURNITURE.COM



ROWE FURNITURE

DID YOU KNOW?

 2015, 2014, 2013, 2012, 2011
BEST OF STATE
INTERIOR DESIGN WINNER

2015, 2014, 2013, 2012 TITLE
SPONSOR UTAH VALLEY
PARADE OF HOMES

 2015 BEST OF HOUZZ
WINNER

2015, 2014, 2013 GOLD
SPONSOR SALT LAKE
PARADE OF HOMES

 2015 BEST OF UTAH VALLEY
BEST DECOR - 1ST PLACE



Stanley
FURNITURE



UNIVERSAL
Good, Affordable, Smart Design.

GUIDE TO HOMES



1 Page 34 | **Big Canyon Homes**
124 White Pine Canyon Rd



2 Page 36 | **CD Construction Inc.**
3297 Meadows Dr



3 Page 38 | **Mountain Country Homes**
2791 American Saddler Dr.



4 Page 40 | **Jaffa Group Design Build**
2547 Holiday Ranch Loop



5 Page 42 | **Utah Home Building Co.**
2420 Country Lane



6 Page 44 | **Tall Pines Construction**
1370 E Lasso Trail



7 Page 46 | **Cameo Homes Inc.**
2650 Shadow Ridge Court



8 Page 48 | **Russell & Company**
5787 E Rock Chuck Dr



9 Page 50 | **New Star General Contractors**
7320 N Victory Club Dr



10 Page 52 | **Watts Enterprises Inc.**
54 W Leman Dr



11 Page 54 | **Regal Homes**
629 W St. Andrews Dr



12 Page 56 | **Blue Pine Homes**
567 W Cascade Meadows Loop

SCAN
QR CODE



WHAT YOU FIND

- MAP
- DIRECTIONS
- HOUSE INFO
- TICKET INFO
- AND MORE





13 Page 58 | **PureHaven Homes**
623 Haystack Mountain



14 Page 60 | **Hawkes Phelps Homes**
603 Copper Belt Cr



15 Page 62 | **Utah 7000 Cabins**
6379 Golden Bear Loop West



16 Page 64 | **Lane Myers Construction**
7644 Outpost Way



17 Page 66 | **Woodside Homes**
379 Valley Dr



18 Page 68 | **RKC Builders**
8830 Parley's Lane



**Being a part of clients dreams in
Park City for over 20 years.**

**8 time Showcase of Homes
participant-photo 2014 entry**



Proud Member of the Park City Area Home Builders Association

Loomis Construction LLC
P.O. Box 980515
Park City, UT 84098
D 435-655-5717
L 435-647-7924
dl@loomishomespc.com
www.LoomisConstructionParkCity.com

One of Park City's Finest Builders



Ticket INFO

TICKETS WILL NOT BE SOLD AT ANY OF THE HOMES DURING THE SHOWCASE.

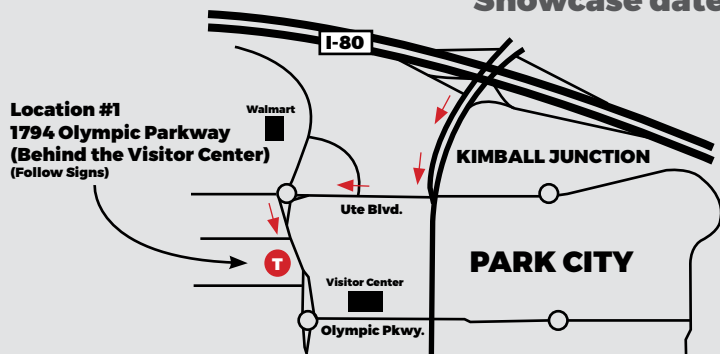
1.

ONLINE TICKETS - \$15 (all ages) online at PCShowcaseOfHomes.com

Each online purchase will receive an e-mail receipt with a unique barcode. Print the receipt or present the email on your smartphone or tablet to use as your ticket.

2.

FULL PRICED TICKETS - \$18 (all ages) Sold at these two locations only during the Showcase dates and times. (Credit Card & Cash Only)



TICKET RULES

One ticket is good for all dates and times. Each ticket entitles person to one visit per home plus re-entry to two homes of your choice. You may see the homes in any order you wish. Purchase a ticket at the locations listed above, view the enclosed map in the Showcase Magazine and start at any home.

CHARITABLE DONATION

A portion of all ticket sales will be donated to the Park City Area Home Builders Charitable Foundation, a non-profit charitable organization responsible for donating to and supporting our local charities in need.



Zions Bank = Construction Loans

We understand that building your dream home is not one-size-fits-all. That is why at Zions Bank we offer a variety of home construction loans* to help you achieve the results as unique as you are.

- » One-Time-Close Construction Loan. Single-loan closing, including lot purchase, construction and a permanent loan. This means only one set of closing costs and loan documents.
- » Construction Conversion Loan. After completion of construction, this loan offers you the option to convert the loan to a fixed-rate permanent mortgage.**
- » Available for new construction or major remodeling projects.
- » Low fixed rate during construction period.
- » Low down payment options available.
- » No maximum loan amount.
- » Initial construction phase has one extension available.
- » Interest payments during the construction period can be built into the loan amount.
- » Construction disbursements to your builder are processed by Zions Bank.

To find the right construction loan for you, call:

Rob Jibson

NMLS #532164

435-658-5311

Follow us on



zionsbank.com

ZIONS BANK®

WE HAVEN'T FORGOTTEN WHO KEEPS US IN BUSINESS®



Equal Housing Lender Member FDIC

*Subject to credit approval. Terms and conditions apply. **Loan amounts are restricted to conforming and the borrower has to meet program guidelines to be eligible.

SPONSORS

The PCAHBA extends a huge “THANK YOU” to our generous sponsors!

ZIONS BANK

WE HAVEN'T FORGOTTEN WHO KEEPS US IN BUSINESS®

Presenting Sponsor

Rob Jibson, MBA – Zions Bank Home Mortgage & Construction

Rob has served the banking & financial services industry in Park City for over a decade, from Private Wealth Mortgage and Construction financing to Commercial Banking. The single most satisfying element of working in this industry for Rob are the relationships that he's built with his clients and business partners over the years after a job well done.

Zions Bank Home Mortgage & Construction Group offers a wide variety of lending products. The phrase “We haven't forgotten who keeps us in business”, is evident in our unique portfolio products that have been created to meet our client's unique and individual needs. From CondoTel financing to our 1xClose Construction loan program, and everything in between.

For questions or inquiries contact Rob Jibson @ (435)658-5311.



Ticket Booth and Shoe Cover Sponsor

BMC Design offers thousands of superbly crafted products—from everyday items to one-of-a-kind custom options built to your specifications. Our design specialists will guide you through your product selection with trained eyes, construction know-how, and a commitment to the excellent craftsmanship and service BMC is known for.

BMC Design can help you realize your vision in the latest styles and trends with our custom cabinetry and window lines. Whether you're designing a high-end bungalow, an edgy penthouse—or anything in between, our in-house designers can help turn your dream look into reality.

With BMC Design, you get a leading team of in-house design specialists to provide one-on-one assistance with your vision, goals and product selection. Plus expert advice, free estimates, start-to-finish project management, and accurate in-home measurements.

Share your inspiration with BMC Design today. We're here to help you deliver your vision, one detail at a time.



VICTORY RANCH

V.I.P. Night Sponsor



Energy Champion Sponsor

Questar is proud to once again partner with the Park City Home Builders in the 2015 Park City Area Showcase of Homes. This is a showcase that just gets it right. Attendees get to tour some spectacular homes in amazing locations, and this year's lineup is sure to wow.

As you make your way through the tour, remember to keep an eye out for energy-saving features that improve home efficiency and comfort. Park City HBA builders take pride in incorporating these critical elements into the homes they build.

The Showcase of Homes is also a great opportunity to discover Questar's TherWise programs, which offer rebates to upgrade or install energy-efficient natural gas products. We encourage you to ask builders about the steps they've taken to save energy. You can also visit www.ThermWise.com for more details on cash rebates for energy upgrades.

Enjoy the show and remember; If You Conserve, You Can Save.



At Mountain Land Design we see the kitchen and bath as “Works of Art” that are “State of the Art” ...we invite you to come in and discover...experience...and compare to find the perfect items for your new kitchen or bathroom. We carry appliances, plumbing and hardware that delivery both beauty and performance.

Once a small boutique in Park City, Utah Mountain Land Design has grown to becoming the leading supplier with over 25 years experience, locally owned and operated we are Utah's premier showroom. Be sure to drop by MountainLand Design with locations in Salt Lake City and Provo.

Visit www.mountainlanddesign.com for more information.



Your home is where you live. Enjoying moments and making memories. A gathering place for family and friends. A relaxing and joyful retreat. Your comfortable, beautiful home.

We specialize in helping clients create a comfortable, beautiful home. Quality home furnishings and personalized design services. One comfortable, beautiful home at a time.

Is that what you're looking for?

Well, come on by our 27,000 square foot showroom, conveniently located just south of Fashion Place Mall, 174 East Winchester (6400 South) in Murray.

And for more inspirational ideas and home furnishing information, we invite you to visit our web site www.hamiltonparkinteriors.com, like us on Facebook, and check out our design projects on www.Houzz.com.

Explore the wonders of home efficiency



As you wind your way through the Park City Area Showcase of Homes, be on the lookout for ThermWise features that add comfort, value and savings. From high-performance windows and insulation, to ENERGY STAR® appliances and super smart thermostats, there's no shortage of ways to live ThermWise.

Take a victory lap

Keep a keen eye on efficiency for your chance to win a Nest smart thermostat and a luxury hotel stay.

How to play:

1. Find the ThermWise displays located throughout the Showcase.
Scan the QR code and enter to win a Nest thermostat.
2. Meet Therm! He'll be welcoming visitors at **Showcase Home #1 on Saturday, August 29th from 1-3pm. Scan his QR code** and you could win dinner and lodging at Hotel Park City.



Photo courtesy of Estabrook Photography / Big Canyon Homes
Showcase Home #1 124 White Pine Canyon

Whether you're in the market for a new home or just window shopping, energy efficiency is a great way to get more from your home.

Discover ThermWise cash rebates for smart energy upgrades at www.ThermWise.com/Park.



SOUTH JORDAN

"Best Places to Live" - Money Magazine 2010, 2012 & 2014

According to a study by the U. S. Census Bureau, South Jordan was ranked the second-fastest growing city in the nation in 2011-2012, and the third-fastest in 2012-2013.



Farmer's Market

10610 S Redwood Rd
Saturdays 8am-2pm
through Oct. 31



Gale History Museum

10300 S Beckstead Ln (1600 W)
801-254-3048
Tues-Fri 10am-6pm & Sat by appointment
Free Hands-on & Family Friendly Exhibits



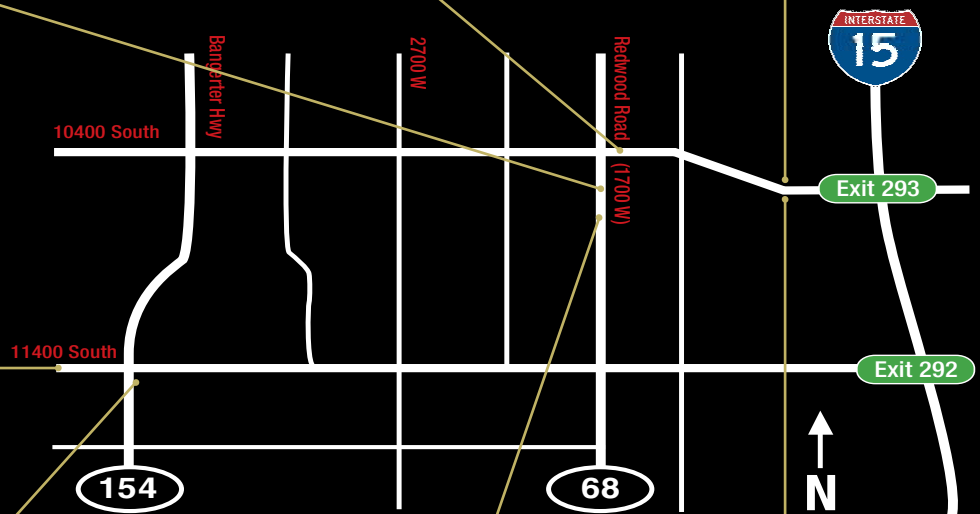
Mulligans Golf & Games

692 W 10600 S • 801-254-3377
Mini Golf, Batting Cages, 9-Hole Courses
Heated Driving Range Open Year Round
- Clubs Available for Rent



Daybreak Development & SoDa Row

11400 S and about 4500 W
National Association of Home Builders
"Best in American Living Platinum Award for
Suburban Smart Growth Community"-2010
Neighborhood Merchants, TRAX Accessible



20 Minutes from Downtown Salt Lake | Easy Access from I-15, Redwood Rd and Bangerter Hwy



The District

11400 S Bangerter Hwy
Megaplex Movie Theatre,
Retail Shopping, Restaurants



South Jordan Fitness & Aquatic Center

10866 S Redwood Rd
801-253-5236
Drop in Patrons Welcome



RiverPark Corporate Center

10600 S and River Front Pkwy
Restaurants, Jordan River Trail Access,
Class A Office Space



ELDREDGE

Fine Furniture • Lighting • Art • Accessories • Interior Design

4750 SOUTH 900 EAST, SALT LAKE CITY
801.261.1414 www.eldredgefurniture.com.

LOCATED IN IVY PLACE-ON THE CORNER OF VAN WINKLE & 9TH. ENTER FROM 9TH EAST.

**Thank you to our generous
2015 sponsors for their
continuous support**

MONTHLY MEMBERSHIP SOCIALS

Anvil Appliances/Anvil Cabinet & Mill
Barclay Butera
BMC Building Materials
Lone Pine Cabinets
Mountain Land Design
PepperTree Kitchen & Bath
Sierra Pacific Windows
Utah Audio
VIA
Zion's Bank

NEW MEMBER BREAKFASTS

Roth Distributing

RON BUTTERFIELD MEMORIAL GOLF TOURNAMENT

ProBuild - Title
Utah Media Group - BBQ/Awards
Sierra Pacific Windows - Beverage/
Snack
Stock Building Supply - Putting
A Company Inc. Portable Restrooms
Barclay Butera
Bedrosian Tile and Stone / Laticrete
BMC Building Materials
Burton Lumber
Hearth & Home Distributors
Honey Bucket
Kip Slauch & Associates
Kupferschmidt Electrical Services
On Top Roofing
Orepac Building Products
Peak Audio
Premier Advisors
Sunroc Building Materials
VIA
Zion's Bank

Welcome to the 2015 Park City Area Showcase of Homes



Welcome to the 2015 Park City Area Showcase of Homes. Park City and the surrounding area is a growing and thriving community, nestled in a beautiful mountain setting. Whether you are looking to buy a home, build a home, or just looking for the latest trends and technology in home building and design, you are in the right place with the right team of professionals!

This year there is something for everyone. The wide variety of homes that are showcased each boast incredible craftsmanship, stunning design details, and cutting-edge technology. I'm proud to be part of this group of builders, architects, designers, vendors, and suppliers, as each take great pride in their community and their commitment to quality.

The Park City Area Home Builders Association is an organization that supports the skilled professionals in the construction industry and offers the very best in continuing education in our field. We thank them for their expertise, and for improving the building experience for all involved.

We also offer a huge thanks to our many sponsors who make this event possible. We sincerely wish to thank Zions Bank, Questar Gas, Hamilton Park Interiors, Mountainland Design, BMC Building Materials, and Victory Ranch for supporting this event.

Please feel free to take your time as you walk through these fantastic homes—you have seven days to explore the homes and enjoy this event. Take a moment to talk with the builder and people representing these homes and find out why they are so passionate about what they do. We look forward to visiting with you!

Thank you for your continued support and enjoy the Showcase of Homes!

Matthew T. Russell

Owner of Russell & Co Construction

2015 President of the Park City Area Home Builders Association

JLC JAMES L. CARROLL & ASSOCIATES INC.

ARCHITECTURAL DESIGN

SALT LAKE CITY 801.359.8517

TOLL FREE 888.889.8517

www.jamescarrollassociates.com



CUSTOM HOME DESIGN • HOME PLAN SALES • REMODELS & ADDITIONS • CONDOS & MULTI-FAMILY

BOARD OF DIRECTORS



Matt Russell
President
Russell & Co



Doug Jardine
First VP
Jardine Construction



Chris Quinton
Second VP
Park City Resort
Builders



Trevor Inman
Associate VP
Honey Bucket



Danny Moreno
Associate VP
VIA



Steve Norr
Treasurer/Secretary
Peppertree Kitchen &
Bath



Geri Strand
Executive Officer
PCAHBA



Mykal Muegge
Membership /Education
PCAHBA

2015 BOARD OF DIRECTORS

BUILDER DIRECTORS:

Jake Jorgenson
Jorgenson Builders

Paul Montgomery
Montgomery Construction

Nate Lewis
CD Construction

ASSOCIATE DIRECTORS:

Amanda Trickett
Closet Factory

Kirk MacKay
RED Group

Greg White
Interstate Brick

PARK CITY AREA HOME BUILDERS ASSOCIATION MISSION STATEMENT

The Park City Area Home Builders Association is a nonprofit organization serving the surrounding areas of Summit, Wasatch and Duchesne counties. It is a member-driven, volunteer organization of builders and associates who are leaders in the building industry and who are stalwart in ensuring a better community and a brighter future for the areas in which they live and work.

PAST PRESIDENTS

Joe Rametta
Rametta & Co

Preston Campbell
Go West Development

Garrett Strong
Tall Pines Construction

Todd Evans
Blackdog Builders

Jason Moore
Plumb Level Square

Jared Rakisits
Mountain Country Homes

Scott Stubbs
Legacy Group Construction

Dennis Loomis
Loomis Construction

Will Dator
WF Construction

Gary Hill
Midway Construction

Mike Mercer
Aerie Construction

Rich Williams
Williams Builders

Richard Jaffa
Jaffa Group Design/Build

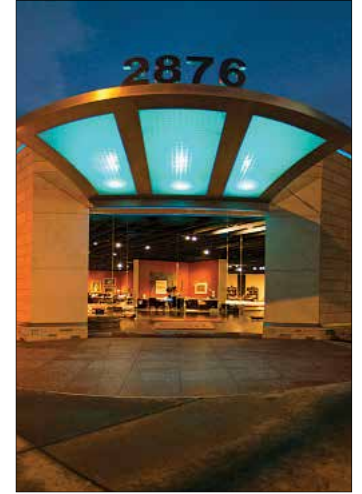
Jeff Peterson
Utah Home Building

UTAH RUGS

Since 1976

Utah's Oldest and Largest Rug Gallery (Formerly Simantov Gallery)

Cleaning | Restoration | Rug Pad



FREQUENTLY ASKED QUESTIONS

FREE
Map App



App Store
Park City Showcase

Do I have to wear booties?

It is at the discretion of the builder and the home owner. Some will require booties, some will allow bare or socked feet and others may not have any requirement. We encourage you to get a pair of booties at your first home and take them with you to use throughout the Showcase. Please be sure to remove them immediately after exiting each home so you do not track dirt and debris into the next home.

Can I just follow the signs on the road or do I need to follow the map?

Although we try to have clear signage, we do not suggest you rely on them alone. Signs often get turned, blown over or moved so they are best used as a supplement to the map.

What if I can't print my ticket?

If you purchase your ticket online, you can check-in at homes with your email confirmation, name or email address.

Why are floor plans not available?

The homes that are part of the Park City Area Showcase are custom homes and the floor plans and designs are the property of the builder, architect and/or home designer. Just as an artist does not want his/her work copied without consent, neither do our builders.

Where can I get the Park City Showcase app and why should I use it?

Preview home details, builder information, rate and comment on homes. Scan the QR code above or search for Park City Showcase in your app store to download the app. See more details on pg. 24

What do the \$\$\$\$ symbols mean?

New this year, homes are categorized into four tiers based on the price of the unfurnished home including the lot. If the house is for sale, the real estate agent will have more pricing details available at the home.

\$\$\$\$ - \$2 million and up

\$\$\$\$ - \$1 million to \$2 million

\$\$\$\$ - \$500,000 to \$1 million

\$\$\$\$ - under \$500,000

Do I have to purchase a ticket for my child?

If your child is small enough to be carried throughout the entire Showcase, then you do not need to purchase a ticket. However, if the child will be walking through the homes, you will need to purchase a ticket for them.

Why are some of the houses outside of Park City?

The Park City Area Showcase of Homes is produced by the Park City Area Home Builders Association which encompasses Summit, Wasatch and Duchesne counties. Therefore, if there is a home outside of Park City but still within those counties, we are happy to include them in our Showcase.

Can I bring my purse into the homes?

It is at the discretion of the builder and the home owner. If you see the following symbol on the home's page, then it means they do not permit bags in that home and you will need to leave them in your car.



Can I take pictures?

It is at the discretion of the builder, architect and the home owner. If you see the following symbol on the home's page, then it means they do not permit photos at that home.



How many days are the tickets good for?

Each ticket is good for all 7 days of the Showcase, one entry per home, plus re-entry to two homes of your choice.



INSPIRING IDEAS FOR **YOUR HOME**

ProBuild offers a complete solution for all of your building needs. With high quality lumber, prefinished siding and a robust selection of building products, we can provide you with the best materials for your home. We recognize the importance of offering products that meet your high standards and lumber and building materials are what we know best.

But ProBuild doesn't stop there. We also offer a full line of windows and doors to put the final touches on a product you will be proud to put your name on. If you need it, we have it. **Please call or come in today with all of your building needs.**

**MIDVALE
BUILDING MATERIALS**
7380 SOUTH 700 WEST
801.255.4201

**HEBER
BUILDING MATERIALS**
1690 SOUTH HIGHWAY 90
435.657.0297

**MIDVALE
MILLWORK**
7380 SOUTH 700 WEST
801.255.4201

www.probuild.com

SMART PHONE APP


2015 PARK CITY AREA
SHOWCASE of HOMES



Download the Showcase app
"Park City Showcase" for home
details, directions, or to share your
comments about each home.



TURN-BY-TURN DIRECTIONS TO EVERY HOUSE!



TRACK HOMES VISITED



HBA MEMBERSHIP DIRECTORY



HOME & BUILDER INFO

FREE
Map App



App Store
Park City Showcase

VOTE FOR YOUR FAVORITE HOME & ENTER TO WIN

Vote for your favorite home, kitchen, master bedroom, master bath and outdoor living and enter to win a 10'x7' wood-sided backyard shed designed and built by **BMC Design** along with their partners **Insulation From Hale**, **SmartSide Trim & Siding** and **J.M. Thomas Forest Products**.

Scan the QR code or go to: PCShowcaseOfHomes.com/voting

When prompted, enter your unique voting code found on your ticket or your email receipt.

Voting Shortcut



the
**closet
butler**

organizing & storage solutions for home & garage

Our expertise and vision allow us to design your space in the most innovative and creative way possible. We use only the finest materials, and every job will be installed by a member of our staff, not by a subcontractor, so we can ensure your satisfaction.

Salt Lake County Davis & Weber County
(801) 532-4224 (801) 728-0747

www.theclosetbutler.com





**WE SPECIALIZE IN HOMES
AT THE PARK CITY ELEVATION**



OFFICES IN OGDEN AND PARK CITY

CONTACT US:

801.479.7555 THEVACGUY@GMAIL.COM



**PROUD MEMBER
OF THE**



**PARK CITY AREA
HOME BUILDERS
ASSOCIATION**



CONTEMPO
Tile - Stone - Slab Gallery

Salt Lake - Salt Lake Slab - Ogden
American Fork - St. George - Boise, ID
www.contempotile.com



Photo by Skylar Nielsen

There's No Place Like an Automated Home

By Pam Baumeister

“Home is the nicest word there is,” mused American author Laura Ingalls Wilder. The conveniences of home have changed drastically in this age of technology. Modern homes are smarter than ever. Systems once manually controlled are now automated. Home automation has made every aspect of home ownership and maintenance nearly effortless these days. A “smart home” is a better home because it creates simplicity, convenience, and energy efficiency for the homeowner.

SIMPLE

As a homeowner looking to simplify your life, getting your home automated makes sense. Most residences built in the last 25 years have the capability to program sprinklers, HVAC, and security systems. But, many times, programming requires reading lengthy manuals and discovering nuances of

each system through complicated trial and error. What if your home could be completely automated? Controlling lights, heat, audio-visual, window coverings, spas, security systems, driveway radiant heat, garage doors, and so much more with the touch of a button from anywhere — including remotely, can all be done from one, centrally located system.

Those who have difficulty learning technology will appreciate not having to read through manuals, learn multiple systems, or familiarize themselves with several remote controls. Home automation systems consolidate everything into one place where commands are intuitive and easy to remember. Additionally, the systems themselves are smarter. For example, room sensors can determine if there needs to be more light and automatically open window coverings without the homeowner having to touch a button.

“This takes the human input out of it and makes it easier,” says Ryan Davis, owner and founder of Ratio AV, a boutique home automation company in Utah. Davis asserts that these sophisticated systems are ideal for people who are not tech savvy, because they do all the work for you and are simple to operate.

CONVENIENT

When your house has all systems integrated you can manage everything from a tablet inside your residence or remotely from your phone, online, or by email. Having every home system within your control and accessible at the tap of a finger is a luxury that few homeowners can boast. Companies that set up home automation for their exclusive clients spend time discovering what is needed for the utmost in luxury and convenience. These professionals then program the back end, work out any bugs in the system, and set it all

up. If you have multiple homes, having them all on identical automation systems makes life even more convenient.

“If you have a vacation home in Park City and wish you could turn off your sprinklers when there is rain for weeks on end, but you’re in another part of the country, home automation makes it possible,” says Danny Moreno, District Sales Manager of VIA, one of the oldest and largest home automation companies in Utah with offices in many western resort towns and big cities. VIA sets up multiple home automation systems for their clients making each setup alike. This eliminates the learning curve from home to home. Whether you set up a primary residence or several of properties, you can oversee any variables in home management with ease.

ENERGY EFFICIENT

“People are thinking about homes

being more energy efficient and ease of installation and accessibility,” says Davis. In earlier days, there was a fair amount of programming and special hardware needed to make it all work. Now, the home automation business has grown and continues to grow alongside the demand for energy efficiency.

A home that runs smoothly and can conserve energy by using power only when needed is part of most home automation systems. Power management systems take an inventory of how much electricity certain elements of the home use and alter them to be more energy efficient. For example, running a water feature for 12 hours might draw a lot of power. The automation system can put limits on how long that water feature is on during the day, to reduce energy usage. Several home automation systems can also manage solar panels, alerting homeowners of how much power is

being produced and used. Light and heat sensors can determine how bright or warm it is outside the home to determine solar gain in the summer and heat loss in the winter. Your home automation system can then put components on standby after a certain amount of time of no use or allow you to shut down systems remotely. That means you won’t waste energy on an entertainment system when the room is empty.

Automated home systems are a beautiful way to customize your home, make your life easier, and create a more energy efficient residence. Most advanced AV and automation companies can work with both new construction and retrofit systems to existing homes, tailoring the needs of the homeowner to the system they install. You’ll agree, having your residence automated makes “home” an even nicer word and an even better place to live.



PROUD MEMBER
OF THE
PARK CITY AREA HOME BUILDERS ASSOCIATION
See us in home #8

r ā t i o
audio/video • low voltage specialists

Multi-room Audio
Theaters & Screening Rooms
Lighting Systems
Shading Solutions
Integration and Automation
Surveillance Systems
Cell Signal Boosters

ratioav.com



Photos courtesy of Heatilator

Finding the Fireplace to Match Your Home

One of the greatest architects of all time, Frank Lloyd Wright, once said, “The fireplace is the heart of the home.” It’s true. There is nothing quite like the appeal of a fireplace in the home. As the center of the home, it ties in the style of the rest of the home and provides a central focal point of the main gathering area.

If you’re building or remodeling your home, curling up next to a cozy new fireplace may very well be in your future, and you’re not alone. Here are a few things to consider while choosing your perfect fireplace fit.

TRADITIONAL FEEL

Mountain living inspires a traditional style and feel when it comes to designing the home, including the fireplace. While wood burning fireplaces are still popular and available to those who want them, many homeowners long to have the homey comfort of a wood-burning fireplace without the hassle, mess and maintenance required of them. According to Kevin Casper, Home Builder Consultant at Hearth and Home Distributors of Utah, you can have both. Fireplaces nowadays can have the convenience of gas while also resembling the look and feel of a wood-burning fireplace. With beautiful stone surroundings and large logs these options can be started with a simple flick of a switch without having to compromise the traditional feel of your home.

MODERN TRENDING

Contemporary design has influenced many home products and fireplaces are no exception. While traditional gas fireplaces with beefy mantles and logs are still popular, affinity for modern-style fireplaces is sweeping the nation and homeowners love their sophisticated simplistic lines and customizable features.

Available in non-traditional sizes and shapes, many modern-style gas fireplaces have stylistic flames that stretch across the entire firebox, LED backlighting and sleek finishes. Instead of logs, homeowners can choose from various media options like colored glass crystals, pebbles or stones. They provide the same warmth and coziness we’re accustomed to with gas fireplaces, but with a sophisticated edge.

OUTDOOR ENTERTAINING

Another trend that is quickly emerging is outdoor fireplace options from freestanding fireplaces and pits to center tables and islands. While it’s traditional to sit around a campfire, many are finding they enjoy outdoor gas options just as much as their wood burning counterparts. With gas options, there is no moving out of the way of smoke when there is a breeze or overwhelming campfire smell on your clothes. Keeping with the modern options available to fireplaces indoors, outdoor fireplaces and pits can also be customized to match the space with the

added convenience of starting the fire in an instant.

SAFETY

For many people, safety is a must when choosing items for the home, and the fireplace is no exception. “Everyone knows the risk of an open flame, but because most gas fireplaces are sealed systems, some homeowners don’t realize the glass gets very hot and can cause burns if touched,” said Kevin Casper. This is especially concerning for households with young children or animals. The fix is a mesh screen installed directly over the glass that functions as a barrier, greatly reducing the risk. In addition choosing the safer gas fireplaces, many of today’s gas fireplaces have state-of-the-art ignition systems that ensure even safer functioning and conserve considerable energy. “Homeowners can save up to \$10 a month on their gas utility bill by choosing a fireplace with intermittent pilot ignition vs. a standing pilot,” said Bob Ballard, senior vice president of marketing for Heat & Glo.

Once you have an idea of what fireplace option you want for your new home or remodel, Hearth & Home Distributors of Utah is a great option with over 40 years of experience in the industry. Visit their parade homes this year or go online to HHDU.com for more inspiration.

LAWYERS.

» Expertise in litigation, business and real estate law

LOCALS.

» Enjoying the Park City way of life for over 30 years



The attorneys headquartered in our Park City office include Greg Cropper, Robert Dillon, Eric Lee, and Justin Keys. We provide the personalized service of a small, hometown firm, but have the expertise—backed by our 70-attorney Salt Lake City office—to solve a vast array of legal issues. Areas of strength for our office include resort and leisure development, real estate, construction, litigation, employment, estate planning, and environmental law.



PASSION.
PERSPECTIVE.
PEOPLE.

JONESWALDO.COM + 435-200-0085
PARK CITY
SALT LAKE CITY
PROVO
ST. GEORGE
CHICAGO



asthma & allergy friendly™
CARPET CLEANING SPECIAL

**2 ROOMS
ONLY \$79**

Cleaning Completed By 8/31/15 **Promo Code: 79DEAL**

asthma & allergy friendly™ Certificate applies to Carpet Cleaning services only.
Minimum charges apply. Not valid in combination with other coupons or offers.
Certain restrictions may apply. Call for details.



BEYOND CARPET CLEANING
CARPET | TILE & GROUT | HARDWOOD | UPHOLSTERY
1-800-STEEMER® | stanleysteemer.com

asthma & allergy friendly™ Certificate applies to Carpet Cleaning services only. Minimum charges apply. Not valid in combination with other coupons or offers. Residential only; cannot be used for water restoration services. Must present promo code at time of service. Valid at participating locations only. Certain restrictions may apply. Call for details. Combined living areas, L-shaped rooms and rooms over 300 sq. ft. are considered 2 areas. Baths, halls, large walk-in closets and area rugs are priced separately. Offer does not include protector.

We know it's important your house feels like a home.
It's all in the details.

801.364.8963
1987 South 1100 East
Salt Lake City, UT
detailscomforts.com

Comforts for the Home
DETAILS



Luxury Meets Adventure in Utah's Great Outdoors

Victory Ranch, a community where endless adventure awaits and privacy prevails.

On the edge of Utah's Wasatch Mountains, near the legendary ski resorts of Deer Valley and Park City, lies Victory Ranch, a luxury residential community where families can escape the everyday and connect with nature's untouched beauty.

At Victory Ranch, homeowners enjoy a boundless array of year-round amenities, including an 18-hole Rees Jones-designed golf course, a community clubhouse with pool and fitness center, riverside dining and a host of kid-centric activities. With more than 4,000 acres of untouched

backcountry, Victory Ranch offers endless outdoor pursuits, from world-class fly fishing to mountain biking, hiking and nordic skiing, to 5-stand shooting, yurt camping and paddleboarding on the Jordanelle.

The true beauty of the community can be found in the quality of the people who call it home. A tightly knit band of individuals and families, homeowners value the experiences that Victory Ranch affords them. They come together regularly at gatherings such as Freestone Friday dinners, après-ski receptions and annual events like the Members

Holiday Party and 4th of July pig roast.

Originally conceived as one of the lowest density communities in Park City, the developer, Sterling Bay, has elected to reduce density further from 700 homes to approximately 350, providing unmatched exclusivity for your legacy home. From cabin-style homes to mountain estates, Victory Ranch's real estate offerings deliver the utmost in contemporary design and mountain charm. It's a destination you will want to come home to every season of the year.





BARCLAY BUTERA
INTERIORS



PROUD MEMBER
OF THE



Please visit us in house #9



BARCLAY BUTERA INTERIORS & NEW STAR GENERAL CONTRACTORS
ARE PROUD TO PRESENT OUR SHOWCASE HOME AT VICTORY RANCH

WWW.BARCLAYBUTERA.COM
255 HEBER AVE PARK CITY, UT 84060
435.649.5540

WWW.NEWSTARGC.COM
2610 WEST 2590 SOUTH SALT LAKE, UT 84119
801.972.6227



This 2015 Showcase home in Red Ledges illustrates many of the latest design trends: mixing metals, glam lighting and splashes of bold blue.

Photos courtesy of Marc Estabrook

Interior Design Trends and Tips

By Hamilton Park Interiors Design Team

The design team at Hamilton Park Interiors gives their take on current interior design trends – plus some inspirational design tips.

EASY BREEZY

Open concept is a huge interior design trend. Why not also bring the outside in with windows and doors that let in lots of light and keep the sight-line uninterrupted? It's an innovative way to create a space that is cohesive with the natural surroundings. *Linda Ashton*

PICTURE PERFECT

Artwork is an investment . . . a conversation piece . . . the jewelry in the room. It's also a great focal point for a room that can enhance the beauty of everything around it and truly complete the space. *Kevin Bakker*

MOUNTAIN MODERN

Mixing modern & rustic styles is definitely a trend here in the Intermountain West. Combining the two -- the simplicity of the modern and the texture of natural materials—creates a warm and fresh space. *Ashlee Bench*

CLASSIC + CHIC

New traditional has its roots in the

past but has an eye to the present (and the future). The details and decoration of these pieces have traditional elements but the overall feel is less bulky -- and more discerning, refined and delicate. New traditional works in most rooms. *Mandy Bird*

OPPOSITES ENHANCE

It's not matchy-matchy, anymore. Many wonderful combinations of patterns, textures and prints are possible. Begin with a favorite fabric and chose others that complement the color palette; mixing bold prints and patterns together in an unexpected way adds interest and personality to a room. *Liz Crowder.*

COLLECTED OVER TIME

Layering several different metal finishes in a room adds an unexpected, yet natural (collected-over-time) look. We're seeing this trend everywhere and absolutely love it! Try mixing cool metals, such as silver, with warm metals like brass and bronze, or my new, favorite finish: burnished brass. *Dayna Duffin*

LIVING ARRANGEMENT

If you want something different from a typical sectional, try putting an armless

love seat, chaise and ottoman together. Then duplicate that arrangement and separate the two with a lamp table. Add small accent tables on each side of the chaises and a cocktail table in the center. It's a great look and very functional. *Robyn Hancock*

NATURALLY STYLISH

Organic is in. Something magical happens when you bring raw, natural elements like collected wood, rocks, horns or shells into a space. It layers in a sense of interest and intrigue to an otherwise typical setting. *Leslie Kessler*

SHED NEW LIGHT

Looked at lighting lately? If so, you've probably seen a mix of finishes and styles. Well, it's not about buying a lighting collection for the whole house anymore. Glam and whimsy are the ticket. Mix it up and have some fun! *Dave Lewis*

DEEP BLUES

The color blue, specifically navy blue, is popping up everywhere and catching the attention of designers. It adds a fresh sophisticated look to a room and creates a calming, yet cheerful feeling, in a space. *Emily Williams*

ALL METRO TECH.



SPECIALIZING IN

Home Automation
Multi Room Audio
Home Theater
Lighting Control
Commercial Audio, Video &
Automation

The preferred systems provider for the Chateaux Deer Valley

SLC 801.330.8320 • Park City 435.658.5278

www.allmetrotech.com



CREATIONS WEST

ARCHITECTURE AND DESIGN



Even the Best Dreams Need a Plan!

New Sandy Office
801-525-6700 or 877-CWPLANS
www creationswest.com





124 White Pine Canyon Road (The Colony)

This exquisite Colony home is located on 6.57 acres within the newly combined “Largest Ski Resort” in the United States, Park City. This custom home features a one of a kind, ski-in ski-out “living roof top”, allowing for easy access to both the Winter Way and Dawn ski runs for skiing, hiking and mountain biking. With over 2,000 square feet of outdoor decks and covered patios, this house will become a favorite gathering place for friends and family year-round. Its breathtaking ski run, mountain range and valley views are sure to be a highlight of this peaceful retreat. Designed by Bradley Mimlitz of Park City Architecture and built by Big Canyon Homes, this 7,768-square-foot custom home has 5 bedrooms, 8 baths, and an oversized three car garage. The home features a large, open great room and dining room. The large kitchen has Wolf appliances, custom cabinets, and magnificent Quartz countertops. Other contemporary comforts include radiant heat, central air conditioning, high efficiency windows and insulation, custom lighting design, and home automation. The engineered wood floors, stone, steel and wood finishes are both rustic and contemporary for a quiet, relaxing mountain top retreat. Settled deep in the aspens and pines, with abundant wildlife and crisp mountain air, this beautiful mountain home is sure to be a must see on your home show tour.



KYLE ARNOLD

KARRIE MCKINNON

Big Canyon Homes, Inc /
Wildfire Design PC

PHONE

435-901-2176 / Big Canyon Homes
435-901-8997 / Wildfire Design PC

E-MAIL

karrie@wildfiredesignnpc.com

WEB

www.bigcanyonhomesinc.com

HOME IS FOR SALE

Mike Mazzone
Park City Realty Group
435-901-0300

TOTAL SQ. FT.

7,768

BEDROOMS

5

BATHROOMS

8

GARAGE BAYS

3

ARCHITECT

Park City Architecture,
Bradley Mimlitz

INTERIOR DESIGNER

Karrie McKinnon,
Wildfire Design PC

PRICE RANGE

\$\$\$\$

PCAHBA MEMBER SUBCONTRACTORS AND SUPPLIERS

Ferguson Bath, Kitchen & Lighting Gallery
Hearth & Home Distributors
Honey Bucket
Sierra Pacific Windows

IT'S MORE THAN SIMPLY BUILDING A MOUNTAIN HOME. IT'S CREATING A LEGACY THAT WILL LAST GENERATIONS.

Listed by:



**BERKSHIRE
HATHAWAY**
HomeServices
Utah Properties



The Colony, located in Park City, is setting the standard for ski-in, ski-out mountain living in North America. The combination of natural beauty, lot size, privacy, and access to mountain sports and leisure are unparalleled.

The new Park City Quicksilver Gondola connects two mountain areas and creates America's largest winter resort, putting The Colony's newest phase right in the middle of this spectacular 7,300-acres. Learn how you can live in this wonderland today. Schedule your private tour of this year-round retreat by contacting our sales team at 435.649.3411 or visit thecolonywpc.com



**AMERICA'S PREMIER SKI-IN/SKI-OUT PROPERTY
ONLY AVAILABLE IN AMERICA'S LARGEST MOUNTAIN RESORT.**



THE COLONY
AT WHITE PINE CANYON[®]

thecolonywpc.com

This is not an offer to sell or a solicitation of an offer to buy to residents of any state or jurisdiction in which the registration requirements for such an offering have not been fulfilled.



3297 Meadows Drive (Eagle Point)



NO BAGS

Set high above Park Meadows in the prestigious Eagle Pointe neighborhood is an architectural masterpiece tailored to meet the everyday lifestyle of its owners. This stunning, progressive transitional home, designed by James Carroll & Associates, showcases the surrounding ski areas through walls of windows in every room. A gorgeous 22-foot-wide curved lift and slide door, frames views of the ski areas and of Park Meadows Golf Course. Custom cabinetry, granite, and a stone fireplace combine to create the “Great Room” with gourmet kitchen and wine display for casual family living or entertaining. The luxurious master retreat beckons you with its many features such as vaulted ceiling, fireplace, deck access, oversize shower with floor to ceiling glass, contemporary plumbing fixtures, and well-appointed walk-in closets. Two spacious guest suites, and an efficiently laid out bunk room are found on the lower level, all opening onto exterior patios and entertaining areas. The lower level is also home to a recreational space with drop down theater screen, and a large exercise room. Unique carpentry, expansive engineered wood floors, along with the interior finish palette of colors and textures from interior designer Felicity Gardner of Gardner Group finish off this exceptional residence. CD Construction, headed by Scot Davis and Ed Clyde, bring to fruition another quality and unique custom home. With over 30 years experience, the CD Construction team builds premier, award-winning luxury homes, ranging from ultra-contemporary, rustic mountain, and the extreme elegance spectrum throughout Utah.



SCOT DAVIS

CD Construction,
Inc.

PHONE
435-671-0971

E-MAIL
scot@cdconstructioninc.com

WEB
www.cdconstructioninc.com

TOTAL SQ. FT.

6,374

BEDROOMS

4

BATHROOMS

6

GARAGE BAYS

2

ARCHITECT
James Carroll &
Associates

INTERIOR DESIGNER
Gardner Group

PRICE RANGE
\$\$\$\$

PCAHBA MEMBER SUBCONTRACTORS AND SUPPLIERS

All-Purpose Windows and Doors
Bedrosian Tile and Stone
BMC Building Materials
Closet Factory
Ferguson Bath, Kitchen & Lighting Gallery

Gardner Group
Geneva Rock Products
Hearth & Home Distributors
Helius Lighting Group
Honey Bucket

ProBuild
Rocky Mountain Waterproofing

Creating Your Park City Dream Home



GARDNER GROUP

(435) 640-5184 gardnergroup.co
info@gardnergroup.co

PROUD MEMBER
OF THE



Gardner Group redefines the term **start-to-finish** in our approach to crafting custom homes, providing **complete oversight of custom building projects**. Our services start with carefully selecting the perfect lot, move on to harmonizing the architecture with interiors, landscaping and lighting design, and culminate in ensuring that **each element of the build process** is carried out to **the highest standards**.



2791 American Saddler Drive (Park Meadows)



Mountain Country Homes is pleased to present this inviting home as our entry in the 2015 Park City Area Showcase of Homes. This cozy home packs quite a few features in its 3000 square feet. Wood and stained concrete floors throughout are warmed with radiant heat. The great room is anchored with a reclaimed barnwood accent wall. Sixteen-foot sliding doors open to the back patio which boasts a fire pit and hot tub. Exposed beams in the kitchen and dining room complement the metal accents in the island. The chef will appreciate the Thermador appliance package. The upper level includes a loft family room and two bedrooms with their own private baths. The comfortable master suite captures the morning sun and is flooded with natural light thanks to the sliding doors which open to the outdoor living spaces. A multi-purpose room and walk through mud room complete the home. The multi-purpose room includes the laundry, pantry and office workspace and features a large window and door to the outside. We invite you to visit us in this perfectly sized home and let us know what your favorite feature is. Custom home designer and builder, Jared Rakisits works closely with you to determine your desires and vision for your one of a kind home. Jared relies on a group of outstanding subcontractors and craftsmen who share in his philosophy of quality and creativity. Together, they bring the finest and most innovative products to complement your home and your unique style.



JARED RAKISITS

Mountain Country Homes /
Alexander Design Build

PHONE
435-640-6749

E-MAIL
jrakisits@gmail.com

WEB
www.alexanderdesignbuildpc.com

TOTAL SQ. FT.
3,001

BEDROOMS
3

BATHROOMS
3

GARAGE BAYS
2

HOME DESIGNER
Alexander Design Group

INTERIOR DESIGNER
Alexander Design Group

PRICE RANGE
\$\$\$\$

PCAHBA MEMBER SUBCONTRACTORS AND SUPPLIERS

Bedrosian Tile and Stone

Burton Lumber

Ferguson Bath, Kitchen & Lighting Gallery

Harris - Dudley Plumbing Radiant & AC

Hearth & Home Distributors

Lone Pine Cabinet

Sure-Loc Hardware, Inc.

VIA



4084 W 8370 S. West Jordan, UT | 801.282.6301
www.lonepinecabinet.com



PROUD MEMBER
OF THE



See us in house #3

At Lone Pine Cabinet we maintain a high standard of reliability while providing our customers with exceptional custom designs and products to fit any of their residential or commercial project needs.

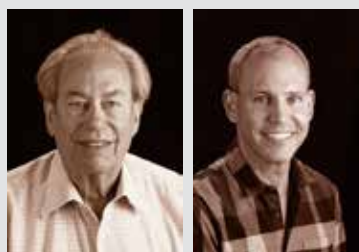
4 Jaffa Group Design Build



2547 Holiday Ranch Loop (Park Meadows)



This contemporary home started as a 1970's tract house, with an atrium, in one of the first suburban neighborhoods in Park City. We took the existing house down to the foundation and added onto the existing 1,500-square-foot single story home, making the house almost 6,000 square feet. The simplicity of the architecture and the materials on the exterior are replicated inside as well. The roof is made up of multiple horizontal planes that extend past the exterior walls and capped with a parapet wall. As you enter the home you walk into a 32-foot-long gallery penetrated by a steel wall, that forms the staircase. The great room fireplace is made up of steel panels and custom cut 3-dimensional Indiana limestone, which is also carried into the master bedroom fireplace. The great room has a 16-foot window wall that opens out onto a heated covered patio extending the living space out into the yard. The kitchen and wet bar anchor the other end of the great room and the dining area is defined by a change in the ceiling plane. The main floor includes the master bedroom a guest room and an office. The second floor is dedicated to the two kids rooms and a playroom with a private deck taking advantage of the mountain views. The lot is extremely exposed and is only 0.33 acres so the landscaping plays an important role in defining the architecture and providing privacy. From the custom designed fence to the gabion retaining walls this home sets a new standard for the neighborhood.



RICHARD JAFFA

SCOTT JAFFA

Jaffa Group
Design Build

PHONE
435-615-6873

E-MAIL
jenn@jaffagroup.com

WEB
www.jaffagroup.com

TOTAL SQ. FT.
5,959

BEDROOMS
5

BATHROOMS
6

GARAGE BAYS
2

ARCHITECT
Jaffa Group Architects

INTERIOR DESIGNER
Jaffa Group Architects -
Scott Jaffa / Silver Peak
Properties - Sarah Berry

PRICE RANGE
\$\$\$\$

PCAHBA MEMBER SUBCONTRACTORS AND SUPPLIERS

Adamson & Company LLC
Cache Valley Electric Co.
Elume Distinctive Lighting
European Marble & Granite
Hansen All-Seasons Insulation

Harris - Dudley Plumbing Radiant & AC
Hearth & Home Distributors
Honey Bucket
JZ Construction
Mountain Land Design Inc.

On Top Roofing
PepperTree Kitchen & Bath
ProBuild
Wood Floors, Inc.



**Peppertree**
Kitchen & Bath, Inc.



5 Utah Home Building Company



2420 Country Lane (Thaynes Creek Ranch)



When we were approached by long time Park City resident Frank Richards to help develop Thayne's Creek Ranch, we were honored. Together with the surrounding open space that was placed in the Land Trust, this property remains as the last operating farm in Park City. The lots were carefully designed around dedicated open space that will never be developed which will forever protect the beautiful entrance corridor into Park City. Horses will graze the property and hay will still be harvested for many years to come. Our lucky Home Owners will be able to ride their horses in the private on site riding arena or from the farm to the local trails in Park City. We worked together with the Park City Planning Department, the Planning Commission and Frank Richards to preserve this Park City legacy property.

For our 2015 Showcase entry, we envisioned a timeless design which would fit right in on the farm, but still have a modern feel with all the latest amenities. The final design incorporated the latest in LEED for Homes Design at the Silver level. Sustainable products were used on the exterior of the home including cement Hardiboard siding, XLD trim, steel roofing, zinc gutters, and locally produced pavers. The structure has 10" thick exterior walls, R-71 insulation in the ceiling, and I-89 glass windows for maximum energy efficiency and comfort. The interior has a modern country feel with Hickory floors, farmhouse sink, beautiful cabinetry and moldings that help make the home feel warm and cozy. Since UHB opened its doors in 1993, we have successfully completed over 350 homes and commercial buildings for our clients. This home demonstrates our passion for quality and craftsmanship. We truly hope you enjoy our teams latest creation.

PCAHBA MEMBER SUBCONTRACTORS AND SUPPLIERS

*A Company Inc Portable Restrooms
ACW Construction, Roofing, Sheet Metal
Bedrosian Tile and Stone
Ferguson Bath, Kitchen & Lighting Gallery
Hansen All-Seasons Insulation*

*Hearth & Home Distributors
ProBuild
Salt Lake Mill LLC
Sierra Pacific Windows*



JEFF PETERSON

Utah Home Building
Company

PHONE
801-268-8999

E-MAIL
jeff@utahhomebuilding.com

WEB
www.utahhomebuilding.com

TOTAL SQ. FT.
5,600

BEDROOMS
4

BATHROOMS
5

GARAGE BAYS
3

HOME DESIGNER
Brian Eicholtz

INTERIOR DESIGNER
Pine Creek Designs

PRICE RANGE
\$\$\$\$



AMY MATTHEWS
TV Host and Licensed General Contractor

"My expert advice?
Rely on an expert."



TV host and Licensed General Contractor Amy Matthews has built and remodeled lots of homes over the years. As an expert, she knows better than anyone the value of working with professionals – like the ones at Ferguson. Our product experts will help you find the perfect products from the finest bath, kitchen and lighting brands in the world, so you can take pride in your home – on every level. Set up your consultation with Ferguson today, and let us show you the possibilities for your next project.

Visit Ferguson.com/Showrooms and schedule your appointment today.

FERGUSON[®]
Bath, Kitchen & Lighting Gallery

Park City
6427 N Business Park Loop Rd
(435) 658-3670

Salt Lake City
2565 S 300 W
(801) 463-8340



FERGUSON.COM/SHOWROOMS

6 Tall Pines Construction



1370 E Lasso Trail (Hideout Canyon)



NO BAGS

With stellar views of Mount Timpanogas and the Jordanelle Reservoir, this house was sure to be defined by its peaceful location. The owners wanted the design of their home to complement and take advantage of the chosen setting. The architect William Mammen and designer Kay Mammen of Mammen Associates Architecture, along with general contractor Garrett Strong of Tall Pines Construction worked with the owners throughout the process to ensure this goal was realized.

This mountain contemporary home features high ceilings and large windows that frame the stellar mountain view. A window wall off the great room has a 12-foot opening that effortlessly joins the indoor and outdoor spaces to create a harmonious flow.

The curved roofs and ceiling are designed to mirror the home's surroundings, with no sharp angles in sight. As an elevated platform, the upper deck became a perch to enjoy the expansive views while the lower patio on the ground brings you close to the natural setting.

This home was designed to be comfortable for a couple while maintaining the option to accommodate guests. The main living spaces that a couple enjoys are easily accessible on the main floor, including the master suite – a relaxing spa-like retreat with calming colors and textures.

Tall Pines Construction masterfully executed the thoughtful designs of Mammen Associates Architecture to bring this location-inspired, breathtaking dream home to a reality.



GARRETT STRONG

Tall Pines
Construction

PHONE
435-640-5136

E-MAIL
garrett@tallpinesconstruction.com

WEB
www.tallpinesconstruction.com

TOTAL SQ. FT.

4,867

BEDROOMS

4

BATHROOMS

4

GARAGE BAYS

2

ARCHITECT
Mammen & Associates

INTERIOR DESIGNER
Kay Mammen

PRICE RANGE
\$\$\$\$

PCAHBA MEMBER SUBCONTRACTORS AND SUPPLIERS

Bedrosian Tile and Stone
Blackdog Builders Inc
BMC Building Materials
Elume Distinctive Lighting
Hearth & Home Distributors

Honey Bucket
Mountain Land Design Inc.
Raintight Roofing, Inc.
SkyView Window and Door



Visit one of our Five Showrooms from Ogden to Salt Lake to Orem

heatilator
The first name in fireplaces

HEAT & GLO
No one builds a better fire

435-214-0977

973 E. 2100 S.
Salt Lake City
www.HHDU.com


HARRISTONE


MERRILLSTONE



2650 Shadow Ridge Court (Tuhaye)



NO BAGS
NO PHOTOS

Cameo Homes Inc. is proud to present mountain home construction at its finest. In visiting this home you will see some of the best in housing products, interior finishes, design and craftsmanship-no details spared. Located in one of Taliskers developments Tuhaye, this home was designed to capture the best views of Mount Timpanogos, Deer Valley & the Tuhaye golf course. The home boasts extremely large decks and outdoor living features including built-in BBQ, pizza oven, fire pits, and outdoor spa. The exterior materials and colors are very warm and inviting from the stone masonry, cedar woods, to the roofing. As you enter the home, you will be captivated by the grand view, interior walls of stone masonry, impressive woodwork, radius walls and staircase. The large gourmet kitchen and butler's pantry is a true chef's delight with the latest in Wolf and Sub Zero Appliances throughout. Home includes a gym, sauna and heated yoga studio that makes exercising a delight, blended with the latest in both comfort technologies and home automation for day-to-day living. Tremendous functional spaces to sleep, dine and entertain. The lower level includes a theater room with seating for 24 plus additional seating at the built-in bar. There is also a very fun bunk room for the kids and wine cellar for the adults you don't want to miss. Cameo Homes is a proven, detail-oriented company building Luxury Homes in Utah as Cameo Homes Inc. since 1976. Come experience what makes a fine, hand-crafted, exquisite home a "Cameo" home.



CHRIS QUINTON



RYAN QUINTON



BRANDON QUINTON

Cameo Homes Inc.

PHONE
801-296-9700

E-MAIL
info@cameohomesinc.com

WEB
www.cameohomesinc.com

TOTAL SQ. FT.
11,015

BEDROOMS

7

BATHROOMS

9

GARAGE BAYS

3

HOME DESIGNER
Empirical Design Studio

INTERIOR DESIGNER
MHR Design,
Marian Rockwood

PRICE RANGE
\$\$\$\$

Find us on  houzz     

PCAHBA MEMBER SUBCONTRACTORS AND SUPPLIERS

AVWORX
Burton Lumber
Echo Builders Inc.
Hearth & Home Distributors
Highline Cabinets

Honey Bucket
Mountain Land Design Inc.
Rocky Mountain Waterproofing
Sierra Pacific Windows
Sunroc Building Materials

The Vac Guy

**Come Experience the Next Generation
of Surround Sound**



DOLBY ATMOS[®]

**Visit
Home #7 by Cameo Homes Inc.**



AVWORX
HOME THEATER & AUTOMATION

1090 Cambridge Circle, Layton, Utah 84040 (801) 774-8080 www.avworx.net contact@avworx.net

**PROUD MEMBER
OF THE**

**PARK CITY AREA
HOME BUILDERS
ASSOCIATION**



5787 E Rock Chuck Drive (Victory Ranch)

Russell & Co is proud to share this incredible mountain modern home set in the pristine Victory Ranch community with breathtaking views overlooking the Provo River, known for its world-class fishing and golf just minutes away. Together with Line 8 Design, we deliver experience and a design that only enhances its beauty, creating a strong connection to its setting. Great skill and expertise are seen in the custom detailing and feeling throughout the home.

Mountain modern design is seen in the large-scale linear tile and stone detailing delicately balanced with the expanse of wood flooring, exposed timber, and custom wood detailing. The house was designed for exceptional livability from the inviting great room with its priceless views and a large fireplace, to a beautiful kitchen with Sub Zero/ Wolf appliances, to the large game room and TV Room perfect for entertaining, and the intimate bedroom suites—the master suite having its own sitting area with a cozy fireplace.

The impressive views overlooking the Provo River can be enjoyed from nearly all areas of the home. Expansive sliding glass doors leading to spacious outdoor decks from the main living area, as well as the Master Suite and Jr. Master Suite give the home owner many chances to take in the natural beauty surrounding them.



MATT RUSSELL

**Russell &
Company**

PHONE
435-640-8264

E-MAIL
office@russellandcobuilders.com

WEB
www.russellandcobuilders.com

HOME IS FOR SALE
Jim Morgan
Victory Ranch
435-513-1316

TOTAL SQ. FT.
5,179

BEDROOMS
5

BATHROOMS
7

GARAGE BAYS
2

HOME DESIGNER
Line 8 Design

INTERIOR DESIGNER
Richard Menna Designs

PRICE RANGE
\$\$\$\$

PCAHBA MEMBER SUBCONTRACTORS AND SUPPLIERS

| | |
|--|-------------------------------|
| ACW Construction, Roofing, Sheet Metal | Gallery |
| Artistic Stone Masonry | Hansen All-Seasons Insulation |
| Closet Factory | Hearth & Home Distributors |
| Ferguson Bath, Kitchen & Lighting | Honey Bucket |
| | Kip Slauch & Associates |

Lemco Flooring Design, Inc
Line 8 Design, LLC
Mele Tile & Natural Stone Co.
Mountain Land Design Inc.
PepperTree Kitchen & Bath

Ratio Inc.
Raintight Roofing, Inc.
Rocky Mountain Waterproofing
Sierra Pacific Windows
Sunroc Building Materials



See us in houses 2, 8 & 18

PROUD MEMBER
OF THE

PARK CITY AREA
HOME BUILDERS
ASSOCIATION



9 New Star General Contractors



7320 N Victory Club Drive (Victory Ranch)

The Club Cabins at Victory Ranch, located in the heart of Victory Ranch, this limited collection of homes presents a timeless aesthetic that honors the tradition of mountain living while also refining it. Set amidst sweeping vistas of the Jordanelle Reservoir and the eastern slopes of Deer Valley Ski Resort, the Club Cabins are ideal for the active family or individual. The Cottonwood is a seamless marriage of traditional and contemporary design elements that guide the architectural principle. A warm, inviting sense of arrival welcomes you home to expansive views and an open-concept living space anchored by a wood-burning fireplace. The living room, dining room and gourmet kitchen flow together and outside onto a large deck offering spectacular views of the golf course and surrounding mountains.

With New Star General Contractors, every construction project is a labor of love. We understand that we are building lodges, commercial buildings, homes or destination properties for real people with unique tastes and desires. Every structure we create is intended to bring long lasting value to the community. Doing so requires commitment, creativity, know-how and enthusiasm from each member of our team and we are motivated to do every thing we can to ensure our projects provide a special sense of place to those who live and work in them. We create friendships and lasting business relationships on one project at a time.

PCAHBA MEMBER SUBCONTRACTORS AND SUPPLIERS

ACW Construction, Roofing, Sheet Metal
A Company Inc Portable Restrooms
Burton Lumber
Ferguson Bath, Kitchen & Lighting Gallery
Kip Slaugh & Associates

Kupferschmidt Electrical Services
Rocky Mountain Waterproofing



JEFF PETTIT

New Star
General Contractors

PHONE
801-972-6227

E-MAIL
jeff@newstargc.com

WEB
www.newstargc.com

TOTAL SQ. FT.
3,050

BEDROOMS
3

BATHROOMS
4

GARAGE BAYS
2

ARCHITECT
OZ Architecture

INTERIOR DESIGNER
Barclay Butera Interiors

PRICE RANGE
\$\$\$\$



PARK CITY *LIVING*

at its most adventurous

18-Hole Rees Jones Golf Course • World-class Fly Fishing • 20 Miles of Hiking and Mountain Biking Trails • 5-Stand Shooting • 4x4 ATV Adventures • Ski-in/Ski-out Park City Lounge • Jordanelle Water Sports • Backcountry Yurts • Fitness Center and Pool Riverside Dining • 5-Star Service



Summit | Sotheby's
INTERNATIONAL REALTY



VICTORY RANCH

Find yourself at VictoryRanchUtah.com

800.770.9891

Homesites from \$400,000 • Custom Homes from \$1,400,000

Victory Ranch does not discriminate on the basis of race, color, religion, sex, handicap, familial status, or national origin. Read the property report for Victory Ranch before signing anything. No federal or state agency has judged the merits or value, if any, of property in Victory Ranch. Access to golf and other amenities is restricted to Victory Ranch Club members and subject to applicable membership fees and other limitations. Each office is independently owned and operated.





54 W Leman Drive (Valais Community)

The new Watts Chamonix model at the successful Valais community reflects bright, clean details and provides simple living at the finest place in the Midway valley.

This home provides brightness, and convenience for a family that is seeking main level floor living with 3 bedrooms and 3 bathrooms accessible to all. We have designed an escape zone over the garage to use as a studio, workout area, or office center.

This home and community provide the best in modern design, fresh living, a variety of amenities and recreational activities for the whole family.



RUSS
WATTS

MIKE
NELSON



MIKE
TAGLIABUE

**Watts Enterprises
Inc.**

PHONE
801-272-7111

E-MAIL
jacey@wattsenterprises.com

TOTAL SQ. FT.

2,490

BEDROOMS

4

BATHROOMS

4

GARAGE BAYS

2

ENGINEER

Watts / Bear Ridge De-
sign / Park Engineering

INTERIOR DESIGNER

Watts / Jennie Mays

PRICE RANGE

\$\$\$\$

PCAHBA MEMBER SUBCONTRACTORS AND SUPPLIERS

Burton Lumber
Hansen All-Seasons Insulation
Hearth & Home Distributors
Honey Bucket
Lemco Flooring Design, Inc

Mountain Land Design Inc.
Stock Building Supply
Rocky Mountain Waterproofing



MIDWAY FLOOR COVERINGS DELIVERS

CARPET
TILE
HARDWOOD
STONE
LAMINATE

Guaranteed Excellence

Midway Floor Coverings backs up every installation with its service guarantee so your project turns out just how you envisioned it. From flooring to countertops and backsplashes to windows, we ensure your complete satisfaction before the job is finished.



Midway Floor Coverings
90 East Main Street
Midway, Utah 84049

P 435-654-1701

info@midwayfloorcoverings.com



EXPERIENCE YOU CAN TRUST
50 YEARS OF EXCELLENCE
NOW SERVICING THE WASATCH BACK



11 Regal Homes / Cervino Development



629 W St. Andrews Drive (Cervino Development)

With a strong emphasis on design, construction quality and structural integrity, the “Bern” floorplan is open, free-flowing and practical while cost factors are kept in check. The “Bern” is perfect for a weekend retreat with a carefree “Lock & Leave” lifestyle or full-time golf course living, providing many years of treasured family memories. This home is for sale and available for immediate occupancy.

Cervino is a 56 home enclave specializing in innovative residential homes combined with golf course living on the newly renovated Crater Springs Golf Course. Home sites are now available in the final phase with walkout basements and incredible valley views. Only 15 home sites remain.

Located next door to the renowned Homestead Resort in beautiful Midway, Cervino is only minutes away from four world-class ski resorts, 90 holes of championship golf, blue-ribbon fly fishing on the Provo River and many other unique outdoor activities.

You are invited to come and experience the Cervino lifestyle.



RICK LLOYD

Regal Homes

PHONE
801-201-6383

E-MAIL
rick.regalhomes@gmail.com

WEB
www.cervinoutah.com

HOME IS FOR SALE
Cynthia Austin
Regal Homes Realty
435-654-6479

TOTAL SQ. FT.
3,568

BEDROOMS
3

BATHROOMS
3

GARAGE BAYS
2

ARCHITECT
In House

INTERIOR DESIGNER
In House

PRICE RANGE
\$\$\$\$

PCAHBA MEMBER SUBCONTRACTORS AND SUPPLIERS

*Aeroscape Park City LLC
BMC Building Materials
Burton Lumber
Geneva Rock Products
Hansen All-Seasons Insulation*

*Hearth & Home Distributors
Honey Bucket
Mountain Land Design Inc.*

GATEHOUSE NO.1

FURNITURE | DESIGN



Find us on Instagram @gatehouseno1
GATEHOUSESTYLE.COM | (801) 225.9505 | 672 S. State St, Orem



567 W Cascade Meadows Loop (Cascade Meadows)

Nestled at the base of Wasatch Mountain State Park, within walking distance to Soldier Hollow Golf Course, and a short drive from Deer Creek Reservoir, lies Cascade Meadows. A 15-unit luxury custom home community. Complete with a large family pavilion, walking path and playground, Cascade Meadows is the ideal living situation for families and outdoor enthusiasts alike. Featuring a portfolio of six beautifully crafted custom home plans, the Cascade Meadows community offers a wide variety of style and functionality to adhere to clients of all different backgrounds, sizes, and activity levels. The featured “Firestone” home plan offers a substantial main level master suite with extended master bath and custom walk-in closet. An impeccable blend of hand selected hardwood, tile, and carpet finishes exemplify the meaning of comfortable living. Complete with elegant custom finishes throughout, this home is certain to make any home buyer’s dream come true.



SAM TORGERSON

Blue Pine Homes

PHONE
801-708-6873

E-MAIL
chet@bluepinehomes.com

WEB
www.bluepinehomes.com

HOME IS FOR SALE
John Armstrong
ARI Realty
801-708-6873

TOTAL SQ. FT.
5,160
BEDROOMS
5
BATHROOMS
4.5
GARAGE BAYS
3

HOME DESIGNER
ECA Home Design

INTERIOR DESIGNER
Caitlin Creer

PRICE RANGE
\$\$\$\$

PCAHBA MEMBER SUBCONTRACTORS AND SUPPLIERS

Arizona Tile
Burton Lumber
Honey Bucket



Bring Your
Style to Life.

The Fall Design Sale · September 3 - 26

calico

FABRICS | FURNITURE | REUPHOLSTERY | WINDOW TREATMENTS | FREE DESIGN SERVICES

6150 South State Street, Murray, UT 84107 | 801.265.9423 | calicocorners.com



623 Haystack Mountain (Red Ledges)

Pure Haven Homes is proud to offer this stunning home located in the distinguished community of Red Ledges. This mountain contemporary home features an open floor plan with stunning views of Mt. Timpanogos and the surrounding mountain range. The expansive rear deck allows for the ultimate in outdoor living. A high vaulted ceiling in the great room and open kitchen offer ample room to entertain or spend a night in with your family. The dining room is encompassed with windows, allowing for the beautiful scenery to surround each guest as they enjoy their meal. The main floor master suite features custom woodwork on the ceiling and views of the Heber Valley. The master bathroom features a large walk-in shower with dual shower heads and a beautiful free standing tub fit for a queen. Continue downstairs and you will find a beautiful walk-out lower level perfect to relax and entertain family and friends. This area features a large great room, spacious guest suite, and two additional roomy bedrooms with a shared bathroom. Enjoy the evening stars as you sit around the open fire pit telling stories and roasting marshmallows. PureHaven Homes builds high-quality crafted homes for the discerning homebuyer. Through a continual pursuit of quality craftsmanship and exceptions customer service, PureHaven Homes has grown exponentially over the past decade. At PureHaven Homes, the focus centers on a process that ensures each client ends up with a great experience and an even better built home.

PCAHBA MEMBER SUBCONTRACTORS AND SUPPLIERS

Burton Lumber
Honey Bucket
Sierra Pacific Windows



SHANE HARR

PureHaven Homes

PHONE
801-870-6559

E-MAIL
shane@purehavenhomes.com

WEB
www.purehavenhomes.com

HOME IS FOR SALE
Chris Maddox
Red Ledges Realty
801-657-2798

TOTAL SQ. FT.

4,139

BEDROOMS

4

BATHROOMS

3.5

GARAGE BAYS

3

HOME DESIGNER
Habitations Residential
Design Group

INTERIOR DESIGNER
Osmond Design

PRICE RANGE
\$\$\$\$



35 south 100 east American Fork
801.870.6559 PureHavenHomes.com





603 Copper Belt Circle (Red Ledges)

Nestled in a dense grove of 100+ year-old juniper trees and situated atop the red ledges shelf is Red Ledges newest, most exclusive HOA community, Juniper Hills. This 40-lot neighborhood offers expansive views of the Heber valley with a Mt. Timpanogos backdrop. Juniper Hills is nestled between holes 1 and 18 of the world renowned Red Ledges Jack Nicklaus signature golf course. This mountain modern dream home is the result of the creative handiwork of architect Michael Upwall and the vision of Jeff Hawkes and Rob Phelps of Hawkes Phelps homes. This creative, discerning, uncompromising team has constructed a unique, modern architectural masterpiece blended masterfully into its natural surroundings. The truly gifted Michael Upwall is a master at conceptualizing space, timeless design, capturing views and natural beauty inside and out. Owning and living in an Upwall designed home is truly an experiential journey each time you are in the home. The sleek ceiling and angles, leaning window wall, steel-stone fireplaces, multiple view lines, expansive, open, and fluid floor plan that efficiently connects public and private living spaces without excess, wasted space complete this contemporary masterpiece. Clean lines, combined with tasteful, organic, luxury finishes with the use of timeless materials of stone, steel, glass and wood were specified by Michael Upwall and Linda Ashton of Hamilton Park Interiors. Furnishings and accessories were carefully selected to enhance the experience of this modern design synced with the mountain serenity.

PCAHBA MEMBER SUBCONTRACTORS AND SUPPLIERS

Eagle Rock Contracting Inc.
Ferguson Bath, Kitchen & Lighting Gallery
Hamilton Park Interiors
Hearth & Home Distributors
Honey Bucket

Mountain Land Design Inc.
On Top Roofing
ProBuild
Rocky Mountain Waterproofing
Salt Lake Mill LLC

Sierra Pacific Windows
VIA



JEFF HAWKES



ROB PHELPS

Hawkes Phelps
Homes

PHONE
208-403-9103

E-MAIL
rob@HawkesPhelps.com

HOME IS FOR SALE
Will Ott
Red Ledges Realty
480-291-3680

TOTAL SQ. FT.
5,716

BEDROOMS
4

BATHROOMS
5

GARAGE BAYS
3

ARCHITECT
Upwall Design,
Michael Upwall

INTERIOR DESIGNER
Hamilton Park Interiors,
Linda Ashton

PRICE RANGE
\$\$\$\$

Hamilton Park

INTERIORS

Come home to beautiful...



174 East Winchester, Murray ✱ 801.892.3444 ✱ hamiltonparkinteriors.com

15 Utah 7000 Cabins | Promontory



6379 Golden Bear Loop West (Promontory)

Nicklaus Lifestyle Villas Collection - THE ESCHER - An Architectural Statement. This modern mountain Villa, located in the Promontory Nicklaus Hillside Village features “skybox” views of Painted Valley Golf Course front nine holes, and westward vistas of the Wasatch Mountain Range. The Escher is a free standing, two-story golf Villa with a distinctive floor plan. From the moment you enter the Escher, you are drawn into magnificent views through towering walls of glass. Overlooking the Nicklaus Course, the Escher Great Room provides a sophisticated gathering space for family and friends, with an adjoining chef’s kitchen suitable for entertaining while preparing the meal. The Escher features a main level master bedroom, and a second bedroom with full bath off the kitchen area that is also perfect for an office or domestic quarters. The Escher lower level offers a separate game room and family room, with an additional master suite and one guest suite.



MIKE COOPEMAN

Utah 7000 Cabins
Promontory

PHONE
(435) 333-4600

E-MAIL
info@Promontoryclub.com

WEB
www.Promontoryclub.com

MODEL HOME
One of four Villa floorplans
Summit Sotheby's International Realty
435-333-4600

TOTAL SQ. FT.

4,066

BEDROOMS

4

BATHROOMS

4.5

GARAGE BAYS

2

HOME DESIGNER
SB Homes

INTERIOR DESIGNER
Vallone Designs,
Donna Vallone

PRICE RANGE
\$\$\$\$

PCAHBA MEMBER SUBCONTRACTORS AND SUPPLIERS

ACW Construction, Roofing, Sheet Metal Stock Building Supply
Ferguson Bath, Kitchen & Lighting Group
Kip Slauch & Associates
Mele Tile & Natural Stone Co.
RC Ornamental

Expanding Spaces to the Extraordinary

Park City Showcase Home 2012
Eagle Point Residence, Park City, UT
Architect: James Carroll & Associates
Contractor: CD Construction
Interior Design: Garner Group



"The versatility and large scale design solutions offered by Panda allows me the freedom to implement contemporary wall openings in my designs. Narrow frames maximize glass exposure in a high quality and proven, energy efficient product I recommend with confidence to my clients."

James L. Carroll - Architect

Panda's oversized glass wall systems have been helping homeowners fulfill their outdoor living dreams for over a quarter of a century.

By extending the living space and seamlessly connecting the indoors to the outdoors, Panda's sliding and folding door systems create vibrant areas for entertaining and enjoying the joys of nature all year long.

Custom fabricated in Las Vegas, Panda's products are designed not only with aesthetics in mind, but also with durability, performance and environmental consciousness.

- Lift & Slides
- Folding Doors
- Horizontal Sliding Walls
- Multi-Slides
- Pivot & French Doors

[LEARN MORE AT PANDA-WINDOWS.COM](http://PANDA-WINDOWS.COM)

Contact us:
702-643-5700
panda@panda-windows.com





7644 Outpost Way (Promontory)

Our main focus for this home was to create a setting both relaxed and refined with the perfect balance of modern flare and traditional mountain style where family and friends can gather and enjoy each other's company and create lasting happy memories.

Constructed by award winning builder, Lane Myers Construction, attention to detail and quality of construction is evident throughout. The layout of the home is designed for maximum enjoyment of Park City's year round lifestyle and is flexible to meet the needs of everyday life or multiple families sharing a second home.

The fabulous open floor plan takes advantage of stunning views from Painted Sky neighborhood from every room. Rich wood stain paired with cream and gray tones team up to create a feel that is modern yet warm and welcoming. The great room is flanked by two lavish master suites and a study where masculine and feminine elements work together in harmony. Luxury finishes combining natural stone, wood, and metal continue throughout the lower level with generous living area and something for everyone including a large lounge, an elegant wine room, a lower level kitchen with sports bar, a game room, as well as 3 additional bedroom suites and a flex space that can be used as an exercise room or storage.

Relaxed, refined, modern yet timeless... the definition of mountain sophistication to be enjoyed for generations to come.

PCAHBA MEMBER SUBCONTRACTORS AND SUPPLIERS

Arizona Tile
Eagle Rock Contracting Inc.
Hearth & Home Distributors
Honey Bucket
Mountain Land Design Inc.

Pella Windows & Doors
Rocky Mountain Waterproofing
Sunroc Building Materials
VIA



LANE MYERS



TYLER MYERS

Lane Myers
Construction

PHONE
801-254-5522

E-MAIL
tyler@lanemyers.com

WEB
www.lanemyers.com

HOME IS FOR SALE
Cam Schiedel & Tisha Digman
Summit Sotheby's International Realty
435-659-1025 or 801-898-2447

TOTAL SQ. FT.
6,667

BEDROOMS
6

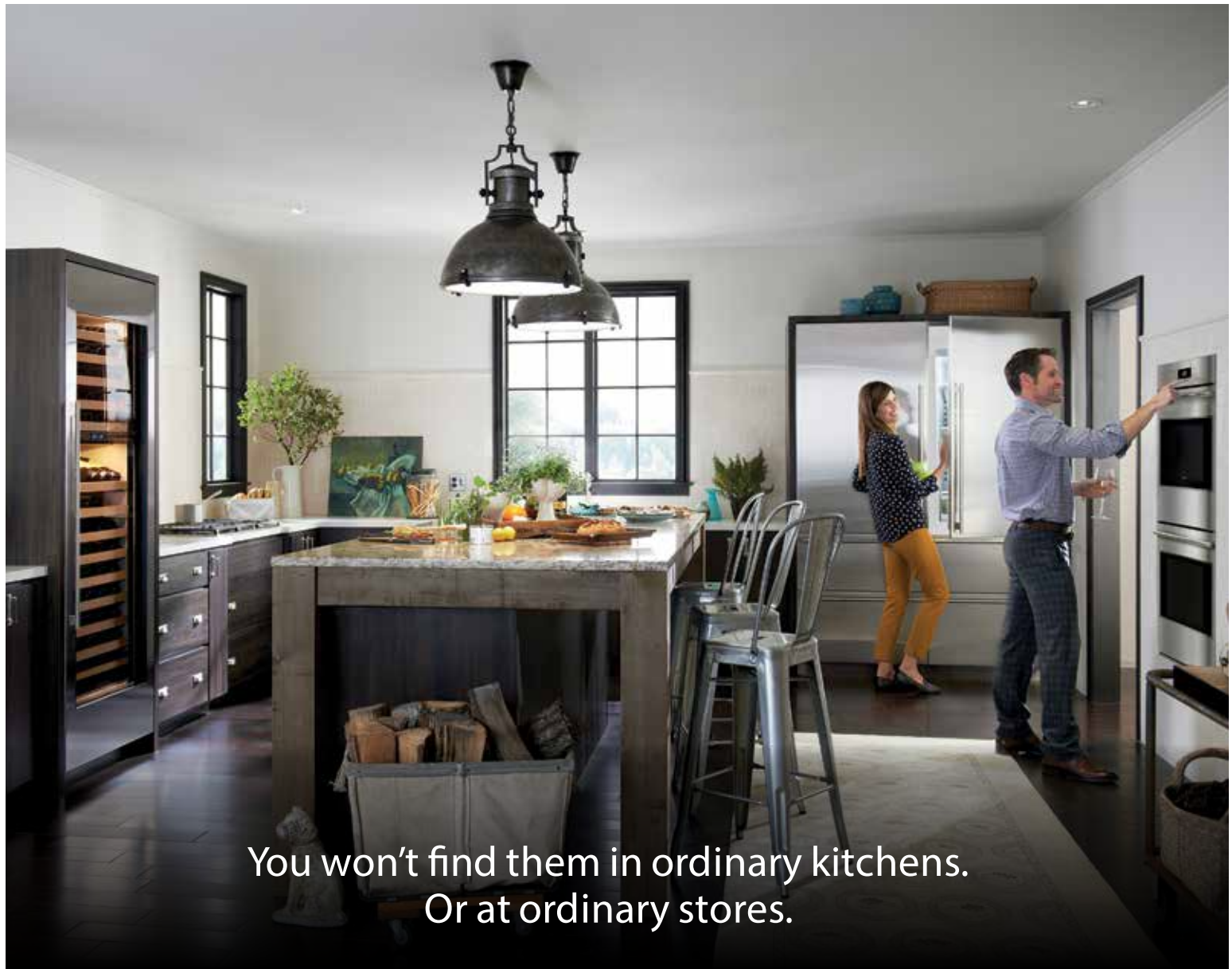
BATHROOMS
7

GARAGE BAYS
3

HOME DESIGNER
TK Boss Residential
Design

INTERIOR DESIGNER
Osmond Design

PRICE RANGE
\$\$\$\$



You won't find them in ordinary kitchens.
Or at ordinary stores.

Sub-Zero, the preservation specialist. Wolf, the cooking specialist.
You'll find them only at your local kitchen specialist.





379 Valley Drive (East Creek Ranch)

Woodside Homes, a Salt Lake City based company for over 30 years, is proud to present one of its most popular plans in the East Creek Ranch Community. East Creek Ranch by Woodside Homes, offers a wonderful opportunity for gracious mountain living. East Creek features six distinctive floor plans which can be paired with three unique architectural styles: Mountain Contemporary, Traditional, or Rustic. The “Plan 6” is just the right floor plan to accommodate many different lifestyles and design choices.

You will be impressed as you walk into the grand foyer and your eyes are immediately drawn to the breathtaking views! Special features include a gourmet kitchen for the chef in the house, a great room perfect for entertaining, a stunning staircase that overlooks the family room, and a spacious game room. Also available is the splendid Home Plus feature. Home Plus provides a separate exterior entrance to an oversized bedroom and bathroom and it’s own kitchenette and laundry. These “guest quarters” located within your home are a perfect option for your visiting family and guests. Please visit our model home and learn about all the wonderful plans Woodside Homes is building in East Creek Ranch.



RYAN ORTMANN

Woodside Homes

PHONE
435-565-1576

E-MAIL
sheilaN@woodsidehomes.com
ClaireL@woodsidehomes.com

WEB
www.woodsidehomes.com

HOME IS NOT FOR SALE
Sheila Noe
Woodside Homes
435-565-1576 or 801-668-5010

TOTAL SQ. FT.
5,536

BEDROOMS
5

BATHROOMS
5

GARAGE BAYS
3

ARCHITECT Kevin Crook

INTERIOR DESIGNER
HRi Designs

PRICE RANGE
\$\$\$\$

PCAHBA MEMBER SUBCONTRACTORS AND SUPPLIERS

Arizona Tile
BMC Building Materials
Hearth & Home Distributors
Rocky Mountain Waterproofing
Sunroc Building Materials



EAST CREEK RANCH

Park City, UT

Featuring six distinctive floor plans, East Creek Ranch's collection of "flexible" options and designer amenities make it easy to create the perfect home for your unique lifestyle. Discover why East Creek Ranch is Better By Design today!



VISIT US TODAY

397 Valley Drive, Park City, UT 84098
SheilaN@WoodsideHomes.com
435.565.1576



6 FLOOR PLANS

2,633 – 5,001 Sq. Ft. • 3 – 7 Bedrooms
Multiple options available
to make your home Better by Design



Woodside Homes reserves the right to change floor plans, elevations, prices, included features/specifications, availability, and maps without notice. Please see sales professional for details. 08/2015



WoodsideHomes.com/Utah



8830 Parley's Lane (The Woods at Parley's Lane)

Beautiful home on .56 acres. Located in The Woods of Parley's Lane with breathtaking views of the surrounding mountains and 80% of the land in this gated community is preserved as open space, combining vital wildlife habitat, recreation, tranquility and beauty. Stroll along the miles of walking trails and enjoy the sounds of running streams and waterfalls throughout this development. Imagine living in one of the best area's of Park City, Utah which is only 20 minutes to Historic Main Street and 20 minutes to Salt Lake International Airport. Some of the amenities included with this home are 2 fireplaces, a breakfast bar, patio, 3-car garage, water feature and an outdoor fire ring.



ROGER KNIGHT

RKC Builders

PHONE
801-746-1058

E-MAIL
roger@rogerknightconstruction.com

WEB
www.rogerknightconstruction.com

HOME IS FOR SALE
David Lawson
Lawson Real Estate Team
435-901-0904

TOTAL SQ. FT.

4,574

BEDROOMS

5

BATHROOMS

5

GARAGE BAYS

3

HOME DESIGNER
Landforms Design

INTERIOR DESIGNER
Jacalyn Roundy Interior Designs

PRICE RANGE
\$\$\$\$

PCAHBA MEMBER SUBCONTRACTORS AND SUPPLIERS

Burton Lumber
Closet Factory
Eagle Rock Contracting Inc.
Hearth & Home Distributors
Honey Bucket

Premier Windows
Raintight Roofing, Inc.
Rocky Mountain Waterproofing
Sierra Pacific Windows
VIA



**ROGER
KNIGHT**
CONSTRUCTION

801-746-1058

rogerknightconstruction.com

**Dedicated to consistently exceed
our customer's expectations**



***Come see us at The Woods of Parley's Lane...
It's gorgeous up here!***



THE WOODS
OF PARLEY'S LANE

**PROUD MEMBER
OF THE**



RESOURCE GUIDE

The Park City Area Home Builders Association Member Subcontractors and Suppliers

1 | Big Canyon Homes, Inc

Appliances..... Ferguson Bath, Kitchen & Lighting
Chimney Caps Hearth & Home Distributors
Exterior Doors Sierra Pacific Windows
Fireplaces..... Hearth & Home Distributors
Lighting Fixtures Ferguson Bath, Kitchen & Lighting
Plumbing Fixtures..... Ferguson Bath, Kitchen & Lighting
Temporary Toilet..... Honey Bucket
Windows Sierra Pacific Windows

2 | CD Construction Inc.

Appliances..... Ferguson Bath, Kitchen & Lighting
Closet Systems Closet Factory
Driveway..... Geneva Rock Products
Exterior Doors All-Purpose Windows and Doors
Exterior Finish Materials ProBuild
Fireplaces..... Hearth & Home Distributors
Framing-Trusses..... BMC Building Materials
Granite Supplier Bedrosian Tile and Stone
Lighting Fixtures Helius Lighting Group
Plumbing Fixtures..... Ferguson Bath, Kitchen & Lighting
Temporary Toilet..... Honey Bucket
Tile Supplier..... Bedrosian Tile and Stone
Waterproofing Rocky Mountain Waterproofing

3 | Mountain Country Homes

Appliances..... Ferguson Bath, Kitchen & Lighting
Audio/Video..... VIA
Cabinetry Lone Pine Cabinet
Door Hardware Sure-Loc Hardware, Inc.
Exterior Doors Burton Lumber
Exterior Finish Materials Burton Lumber
Fireplaces..... Hearth & Home Distributors
Framing-Trusses..... Burton Lumber
HVAC System Harris-Dudley Plumbing Radiant & AC
Interior Doors Burton Lumber
Tile Supplier..... Bedrosian Tile and Stone

4 | Jaffa Group Design Build

Appliances..... Mountain Land Design Inc.
Building Insulation Hansen All-Seasons Insulation
Cabinetry PepperTree Kitchen & Bath
Chimney Caps Hearth & Home Distributors
Countertops..... European Marble & Granite
Exterior Finish Materials Pro Build
Fireplaces..... Hearth & Home Distributors
Framing Labor JZ Construction
Framing-Trusses..... JZ Construction
Granite Installer European Marble & Granite
Granite Supplier European Marble & Granite
Flooring Wood Floors, Inc.
Lighting Fixtures Elume Distinctive Lighting
Plumbing Fixtures.....
..... Harris-Dudley Plumbing Radiant & AC
Roofing..... On Top Roofing
Security System Cache Valley Electric Co.
Temporary Toilet..... Honey Bucket
Tile Installer Adamson & Company LLC
Tile Supplier..... Adamson & Company LLC
Waterproofing Rocky Mountain Waterproofing



NEW FLOORS CAN ADD
NEW LIFE TO YOUR HOME.

IT ALL STARTS WITH
FLOOR & DECOR.



Renovating any room can reflect your personality and the character of your home. Our tile, wood and stone flooring products are of the highest quality and are sure to add appeal to any room. Stop by today and ask about our free Design Services.

**FLOOR &
DECOR**
TILE • WOOD • STONE

NOW OPEN IN DRAPER | 12101 STATE STREET | DRAPER, UT 84020
BEHIND COWABUNGA BAY WATER PARK, NEXT TO ALL STAR LANES

flooranddecor.com

RESOURCE GUIDE

5 | Utah Home Building Co.

Appliances..... Ferguson Bath, Kitchen & Lighting
Building Insulation Hansen All-Seasons Insulation
Chimney Caps Hearth & Home Distributors
Exterior Doors Salt Lake Mill LLC
Finish Carpentry-Materials Salt Lake Mill LLC
Fireplaces..... Hearth & Home Distributors
Framing-Trusses..... ProBuild
Interior Doors ProBuild
Plumbing Fixtures..... Ferguson Bath, Kitchen & Lighting
Roofing..... ACW Construction, Roofing, Sheet Metal
Temporary Toilet..... A Company Inc Portable Restrooms
Tile Supplier..... Bedrosian Tile and Stone
Waterproofing Rocky Mountain Waterproofing
Windows Sierra Pacific Windows

6 | Tall Pines Construction

Appliances..... Mountain Land Design Inc.
Chimney Caps Raintight Roofing, Inc.
Exterior Doors SkyView Window and Door
Exterior Finish Materials BMC Building Materials
Fireplaces..... Hearth & Home Distributors
Framing Labor Blackdog Builders Inc
Granite Supplier Bedrosian Tile and Stone
Lighting Fixtures Elume Distinctive Lighting
Plumbing Fixtures..... Mountain Land Design Inc.
Roofing..... Raintight Roofing, Inc.
Temporary Toilet..... Honey Bucket
Tile Supplier..... Bedrosian Tile and Stone
Waterproofing Rocky Mountain Waterproofing
Windows SkyView Window and Door

7 | Cameo Homes Inc.

Appliances..... Mountain Land Design Inc.
Audio/Video AVWORX
Central Vacuum System The Vac Guy
Decking Sunroc Building Materials
Exterior Doors Sunroc Building Materials
Exterior Finish Materials Sunroc Building Materials
Finish Carpentry-Materials Sunroc Building Materials
Fireplaces..... Hearth & Home Distributors
Framing-Trusses..... Echo Builders
Interior Doors Sunroc Building Materials
Temporary Toilet..... Honey Bucket
Windows Sierra Pacific Windows

8 | Russell & Company

Appliances..... Mountain Land Design Inc.
Architect Line 8 Design, LLC
Audio/Video Ratio Inc
Building Insulation Hansen All-Seasons Insulation
Cabinetry PepperTree Kitchen & Bath
Carpet Lemco Flooring Design, Inc
Chimney Caps .. ACW Construction, Roofing, Sheet Metal
Closet Systems Closet Factory
Door Hardware Mountain Land Design Inc.
Driveway..... Kip Slaugh & Associates
Exterior Doors Sierra Pacific Windows
Exterior Doors Sunroc Building Materials
Fireplaces..... Hearth & Home Distributors
Foundation Kip Slaugh & Associates
Framing-Trusses..... Sunroc Building Materials
Interior Doors Sunroc Building Materials
Masonry Artistic Stone Masonry
Plumbing Fixtures..... Ferguson Bath, Kitchen & Lighting
Roofing..... Raintight Roofing, Inc.
Temporary Toilet..... Honey Bucket
Tile Installer Mele Tile & Natural Stone Co.
Waterproofing Rocky Mountain Waterproofing
Windows Sierra Pacific Windows



MOUNTAIN TIMBER
FURNISHINGS

Reclaimed MOUNTAIN RUSTIC  *Refined* MOUNTAIN CONTEMPORARY

Mountain Timber Furnishings is Park City's largest furniture store where you will find an eclectic mix of contemporary and mountain rustic furniture. Come see our showroom or let one of our designers turn your vision into reality with our custom ordering.

9 | New Star General Contractors

Appliances.....Ferguson Bath, Kitchen & Lighting Gallery
Bath Hardware.....
Ferguson Bath, Kitchen & Lighting Gallery
Chimney Caps .. ACW Construction, Roofing, Sheet Metal
Decking Burton Lumber
Door Hardware Burton Lumber
Driveway..... Kip Slaugh & Associates
Electrical SystemKupferschmidt Electrical Services
Exterior Doors Burton Lumber
Exterior Finish Materials Burton Lumber
Finish Carpentry Burton Lumber
Finish Carpentry-Materials Burton Lumber
Foundation Kip Slaugh & Associates
Framing-Trusses..... Burton Lumber
Hardware Burton Lumber
Interior Doors Burton Lumber
Lighting FixturesKupferschmidt Electrical Services
Plumbing Fixtures.....Kupferschmidt Electrical Services
Roofing..... ACW Construction, Roofing, Sheet Metal
Specialty Wood Construction..... Burton Lumber
Temporary Toilet..... A Company Inc Portable Restrooms
Waterproofing Rocky Mountain Power

10 | Watts Enterprise Inc.

Appliances.....Mountain Land Design Inc.
Building Insulation Hansen All-Seasons Insulation
Door Hardware Burton Lumber
Exterior Doors Burton Lumber
Exterior Finish Materials Burton Lumber
Finish Carpentry-Materials Burton Lumber
Fireplaces..... Hearth & Home Distributors
Flooring Lemco Flooring Design, Inc
Framing-Trusses.....Stock Building Supply
Hardware Burton Lumber
Interior Doors Burton Lumber
Temporary Toilet..... Honey Bucket
Tile Installer Lemco Flooring Design, Inc
Tile Supplier..... Lemco Flooring Design, Inc
Waterproofing Rocky Mountain Waterproofing
Windows Burton Lumber

11 | Regal Homes

Appliances.....Mountain Land Design Inc.
Building Insulation Hansen All-Seasons Insulation
Exterior DoorsBMC Building Materials
Exterior Doors Burton Lumber
Exterior Finish Materials Burton Lumber
Finish Carpentry-Materials Burton Lumber
Fireplace Hearth & Home Distributors
Foundation Geneva Rock Products
Framing-Trusses..... Burton Lumber
Garage Doors Burton Lumber
Interior Doors Burton Lumber
Landscaping Aeroscape Park City LLC
Temporary Toilet..... Honey Bucket
WindowsBMC Building Materials
Windows Sierra Pacific Windows

12 | Blue Pine Homes

Door Hardware Burton Lumber
Exterior Doors Burton Lumber
Exterior Finish Materials Burton Lumber
Finish Carpentry-Materials Burton Lumber
Hardware Burton Lumber
Interior Doors Burton Lumber
Temporary Toilet..... Honey Bucket
Tile Supplier..... Arizona Tile

13 | PureHaven Homes

Finish CarpentryMaterials..... Burton Lumber
Temporary Toilet..... Honey Bucket
Waterproofing Rocky Mountain Waterproofing
Windows Sierra Pacific Windows



So nice to come home to...

GET A FREE QUOTE

800-550-0952

Visit our Showrooms
for ideas & see full burning displays

Why Alpine Gas Fireplaces?

- Utah's ONLY fireplace manufacturer, 37+ years of building custom-fit fireplaces
- Alpine's patented "Positive Pressure" technology
- Utah's largest selection of fireplaces & stoves
- Utah's distributor for Alpine, Astria & Iron Strike by Lennox, Town & Country, Pacific Energy, Kozy Heat, Montigo, Vermont Castings, FMI, Majestic and Monessen products.
- Factory Certified Installers, Licensed & Insured
- Mantels, shelves, stone, tile, marble & slate
- Outdoor Fireplaces & Fire Pits



COME SEE THE
Parade of Homes
SPECIALS
ON FIREPLACES
& STOVES!



SANDY

9192 South 300 West
801-566-0666

OREM

1417 South State Street
801-225-4015



ST. GEORGE

393 East Riverside Drive
435-628-9133



SUGARHOUSE

2236 South 1150 East
801-487-4446



LEHI

782 West State Street
801-768-8411

BOISE

111 South Stratford Drive
208-246-8858

www.alpinefireplaces.com

Wood • Gas • Pellet • Electric • Gas Logs • Outdoor Fire Pits

astria
FIREPLACES™

KOZY HEAT
FIREPLACES

IRONSTRIKE
HEAT FOR LIFE™

14 | Hawkes Phelps Homes

| | |
|---------------------------------|---|
| Appliances..... | Mountain Land Design Inc. |
| Audio/Video..... | VIA |
| Carpet..... | Hamilton Park Interiors |
| Door Hardware..... | Mountain Land Design Inc. |
| Exterior Doors..... | Sierra Pacific Windows |
| Exterior Finish Materials..... | ProBuild |
| Finish Carpentry..... | Eagle Rock Contracting Inc. |
| Finish Carpentry-Materials..... | Salt Lake Mill LLC |
| Fireplaces..... | Hearth & Home Distributors |
| Hardware..... | Mountain Land Design Inc. |
| Interior Doors..... | Salt Lake Mill LLC |
| Lighting Fixtures..... | |
| | Ferguson Bath, Kitchen & Lighting Gallery |
| Plumbing Fixtures..... | |
| | Ferguson Bath, Kitchen & Lighting Gallery |
| Roofing..... | On Top Roofing |
| Temporary Toilet..... | Honey Bucket |
| Waterproofing..... | Rocky Mountain Waterproofing |
| Windows..... | Sierra Pacific Windows |

15 | Utah 7000 Cabins

| | |
|---------------------------------|---|
| Appliances..... | Ferguson Bath, Kitchen & Lighting Gallery |
| Bath Hardware..... | |
| | Ferguson Bath, Kitchen & Lighting Gallery |
| Finish Carpentry-Materials..... | Stock Building Supply |
| Foundation..... | Kip Slauch & Associates |
| Iron/Metal Work..... | RC Ornamental |
| Plumbing Fixtures..... | |
| | Ferguson Bath, Kitchen & Lighting Gallery |
| Roofing..... | ACW Construction, Roofing, Sheet Metal |
| Tile Supplier..... | Mele Tile & Natural Stone Co. |

**Thank you for attending
the 2015 Park City Area
Showcase of Homes.**

**Save the date for the 2016
Showcase of Homes
August 26-28 & September 2-5**

16 | Lane Myers Construction

| | |
|---------------------------------|------------------------------|
| Appliances..... | Mountain Land Design Inc. |
| Audio/Video..... | VIA |
| Decking..... | Eagle Rock Contracting Inc. |
| Exterior Doors..... | Pella Windows & Doors |
| Finish Carpentry..... | Eagle Rock Contracting Inc. |
| Finish Carpentry-Materials..... | Sunroc Building Materials |
| Fireplaces..... | Hearth & Home Distributors |
| Framing-Trusses..... | Sunroc Building Materials |
| Interior Doors..... | Sunroc Building Materials |
| Security System..... | VIA |
| Temporary Toilet..... | Honey Bucket |
| Tile Supplier..... | Arizona Tile |
| Waterproofing..... | Rocky Mountain Waterproofing |
| Windows..... | Pella Windows & Doors |

17 | Woodside Homes

| | |
|---------------------------------|------------------------------|
| Cabinetry..... | BMC Building Materials |
| Exterior Doors..... | BMC Building Materials |
| Exterior Finish Materials..... | Sunroc Building Materials |
| Finish Carpentry-Materials..... | BMC Building Materials |
| Fireplaces..... | Hearth & Home Distributors |
| Framing-Trusses..... | Sunroc Building Materials |
| Framing Labor..... | Sunroc Building Materials |
| Granite Supplier..... | Arizona Tile |
| Interior Doors..... | BMC Building Materials |
| Tile Supplier..... | Arizona Tile |
| Waterproofing..... | Rocky Mountain Waterproofing |

18 | RKC Builders

| | |
|-----------------------|------------------------------|
| Audio/Video..... | VIA |
| Closet Systems..... | Closet Factory |
| Decking..... | Burton Lumber |
| Door Hardware..... | Burton Lumber |
| Exterior Doors..... | Burton Lumber |
| Finish Carpentry..... | Eagle Rock Contracting |
| Fireplaces..... | Hearth & Home Distributors |
| Framing-Trusses..... | Burton Lumber |
| Interior Doors..... | Burton Lumber |
| Roofing..... | Raintight Roofing Inc. |
| Temporary Toilet..... | Honey Bucket |
| Waterproofing..... | Rocky Mountain Waterproofing |
| Windows..... | Premier Windows |
| Windows..... | Sierra Pacific Windows |



Park City Heights, a beautiful new mountain community from Ivory Homes

The word "affordable" is rarely used in the same sentence with Park City, but Park City Heights is changing that. The exclusive Park City lifestyle will now be more accessible to those looking for a new home in this world-class mountain community. Quality, sustainability and design come together to create a tremendous opportunity to live in a spectacular location. This new Ivory master-planned community balances aesthetics and sustainability with neighborhood parks, open space and trails. Residents will enjoy easy access to the famous "Rail Trail", with miles of new and existing hiking and biking trails, a community park, clubhouse, pool and other unique amenities.

TOWNHOMES • PARK HOMES • COTTAGE HOMES • HOMESTEAD HOMES



Clubhouse and Sidewinder Cottage Home plan. (Artist rendering subject to change.)

435-657-8071 ivoryhomes.com/parkcity
Kearns Blvd. & Richardson Flat Rd., Park City, UT

IVORY HOMES
UTAH'S NUMBER ONE HOMEBUILDER



YOUR DESIGNER SHOWROOM



BMC offers top-quality finish products with our extensive selection of cabinets, windows, doors, millwork, and designer hardware. Visit our showroom to speak with a knowledgeable design specialist, and browse our beautiful displays in a variety of architectural styles.



- Cabinets, windows, doors and millwork,
- Designer kitchen, bath, and door hardware
- One-on-one service with custom millwork packages delivered to your door
- Lumber, building materials, and trusses
- **READY-FRAME®** computerized pre-cut and labeled framing packages

With BMC, you get quality the pros trust with service you can count on.

WEST VALLEY CITY
801.441.5840

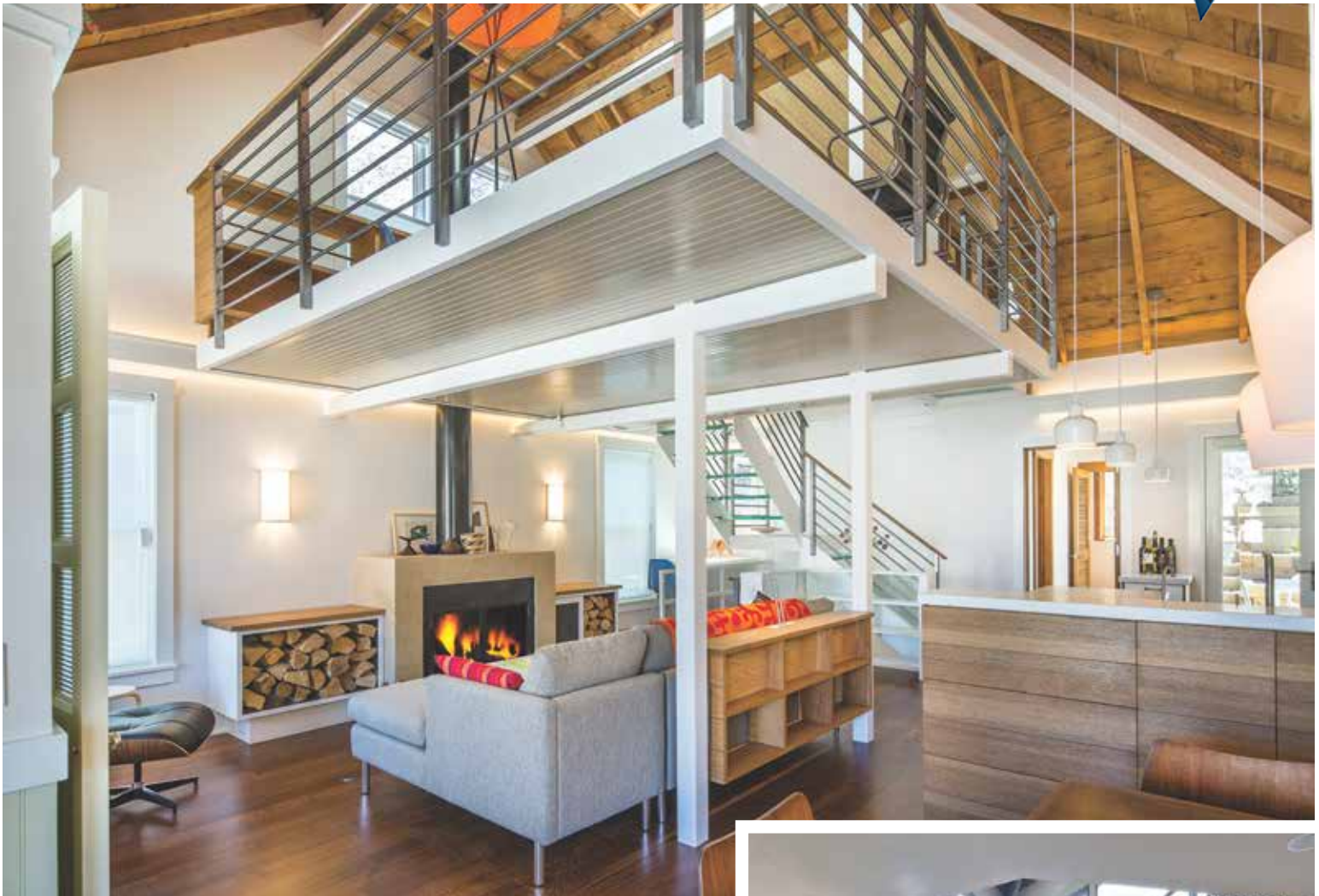
WEST JORDAN
801.565.3500

OREM
801.224.0541

OGDEN
801.731.0621

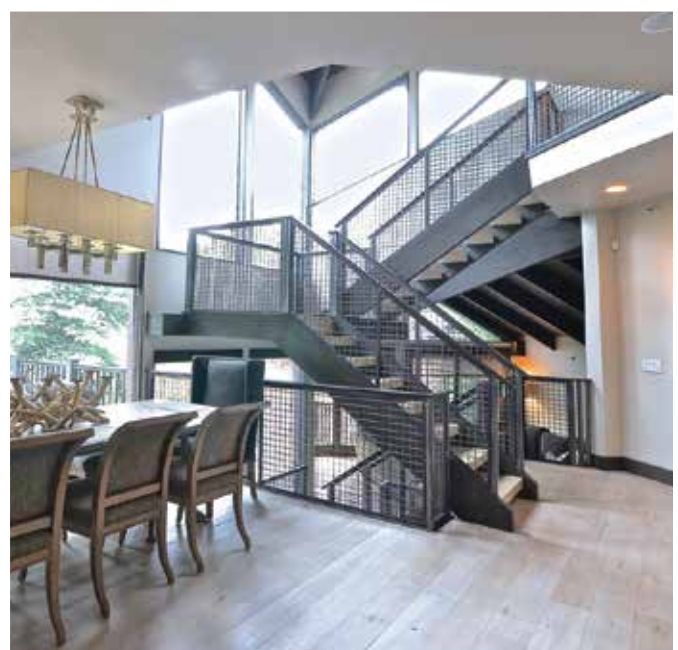
www.BuildWithBMC.com

Voted Best Contractor Park City 2014 & 2015



For over two decades, PJ Builders has been creating relationships in Park City. "Famous for Quality" is our motto and we want to deliver this same high level of craftsmanship to your project.

Working exclusively in Park City, we have the right team to make your project a success. Please take a moment to view the gallery of homes and let us know if there is anything our team can do to help you create your dream project. We realize your home is a major investment and we will work hard to give you the best possible product.



www.pjbuilders.com • 435-649-7345

**Because the first thing
they notice...
shouldn't be the Couch**



Portraits That Define Your Lifestyle

**Limited sittings at
our premier locations**

**Now scheduling for
Fall colors
and Winter
locations**

Satisfaction Guaranteed



Utah's Premier Portrait Studio

Impact
PHOTOGRAPHY

75 South Main • Heber City, Utah

435-654-2726

IMPACTdesignerPORTRAITS.com

*Refundable \$250 deposit required when sitting is scheduled. If sitting is missed deposit will turn into a credit for future use.



2015 PARK CITY SHOWCASE OF HOMES ENTRY

603 N. COPPER BELT CIRCLE

5 Bedrooms | 5 Bathrooms | 5,680 Square Feet | \$1,995,000

The mountain community of Red Ledges is a 2000-acre natural playground with stylish mountain contemporary homes and endless recreation, located in the beautiful Heber Valley, just minutes from downtown Park City.

GOLF | TENNIS | EQUESTRIAN | DINING | SWIM & FITNESS | SKI LOUNGE



REDLEDGES.COM

HEBER VALLEY, UTAH

(877) 733-5334



Exclusively Brokered by Red Ledges Realty, LLC. Obtain the Property Report required by federal law and read it before signing anything. No federal agency has judged the merits or value, if any, of this property. All descriptions, depictions, and renderings are provided solely for illustrative purposes and are subject to change. ©2015 Red Ledges Land Development, Inc.



Huetter Molding and Stair Parts

FOR REMODEL AND NEW HOME CONSTRUCTION

ph: 801-266-3222

toll free: 800-246-3225

www.huettermill.com • 4730 South 500 West • Murray, UT 84123